

BISTRO TOUCH LARGE CAPACITY

NEWCO ENTERPRISES INC,
3650 NEW TOWN BLVD SAINT CHARLES, MO 63301
1-800-325-7867



For brewer PN 128280

Shown with side car accessory, 128269-BPC
To order Brewer and Side Car together, order PN 128302

NEWCO CONTACT INFORMATION

ADDRESS

NEWCO ENTERPRISES INC,
3650 NEW TOWN BLVD
SAINT CHARLES, MO 63301

CUSTOMER SERVICE PHONE

1-800-325-7867

TECHNICAL SERVICE PHONE

1-800-556-3926

FAX

1-636-925-0029

WEBSITE

newcocooffee.com

CUSTOMER SERVICE AND SALES EMAIL

sales@newcocooffee.com

MAINTENANCE INFORMATION

Machine Model _____

Serial Number _____

Company Information and Phone Number

TABLE OF CONTENTS

WARRANTY	4
SERVICING YOUR MACHINE	5
Draining the Hot Water Tank	5
Whipper Maintenance Instructions	6
Replacing the Pump Heads	11
Side Car Accessory Product Installation	13
MACHINE PARTS	14
Exterior	14
Side Car Accessory	15
Back Panel	16
Inlet Area	18
Door	19
Cabinet	21
Hoppers	23
Whipper	24
Fan Motor	25
Pumps	26
Tank Assembly	28
Tank Lid Assembly	29
Overflow Tube	30
Motors & Electrical Components	31
Main Control Board	34
Auxiliary Board	35
Wiring Diagram	36
Miscellaneous	37

WARRANTY

This warranty supersedes all other previous warranties that are currently in manuals. Newco warrants equipment manufactured by it for 1-year parts and labor. Accessories, Dispensers, and Display Tablets - 1 Year parts only. Electronic Circuit and Control Boards- 3 years parts, 1 year labor. Equipment manufactured by others and distributed by Newco- please see original equipment manufacturers warranty, Newco will follow.

These warranty periods run from the date of sale Newco warrants that the equipment manufactured by it will be commercially free of defects in material and workmanship existing at the time of manufacture and appearing within the applicable warranty period. This warranty does not apply to any equipment, component or part that was not manufactured by Newco or that, in Newco's judgment, has been affected by misuse, neglect, alteration, improper installation or operation, relocation or reinstallation, improper maintenance or repair, incorrect voltage applied to the unit at any time, damage or casualty. This warranty does not apply to any equipment failures related to poor water quality, excessive lime and chlorine and non-periodic cleaning and descaling. Warranty is null and void if muriatic or any other form of hydrochloric acid is used for cleaning or deliming. In addition, this warranty does not apply to replacement of items subject to normal use including but not limited to user replaceable parts such as faucet seat cups, sight gauge tubes, washers, o-rings, tubing, seals and gaskets.

This warranty is conditioned on the Buyer 1) giving Newco prompt notice of any claim to be made under this warranty by telephone at (800) 556-3926 or by writing to **3650 New Town Blvd, Saint Charles, MO 63301**; 2) if requested by Newco, shipping the defective equipment prepaid to an authorized Newco service location; and 3) receiving prior authorization from Newco that the defective equipment is under warranty.

THE FOREGOING WARRANTY IS EXCLUSIVE AND IS IN LIEU OF ANY OTHER WARRANTY, WRITTEN OR ORAL, EXPRESS OR IMPLIED, INCLUDING, BUT NOT LIMITED TO, ANY IMPLIED WARRANTY OF EITHER MERCHANTABILITY OR FITNESS FOR A PARTICULAR PURPOSE. The agents, dealers or employees of Newco are not authorized to make modifications to this warranty or to make additional warranties that are binding on Newco. Accordingly, statements by such individuals, whether oral or written, do not constitute warranties and should not be relied upon.

If Newco determines in its sole discretion that the equipment does not conform to the warranty, Newco, at its exclusive option while the equipment is under warranty, shall either 1) provide at no charge replacement parts and/or labor (during the applicable parts and labor warranty periods specified above) to repair the defective components, provided that this repair is done by a Newco Authorized Service Representative; or 2) shall replace the equipment or refund the purchase price for the equipment.

THE BUYER'S REMEDY AGAINST NEWCO FOR THE BREACH OF ANY OBLIGATION ARISING OUT OF THE SALE OF THIS EQUIPMENT, WHETHER DERIVED FROM WARRANTY OR OTHERWISE, SHALL BE LIMITED, AT NEWCO'S SOLE OPTION AS SPECIFIED HEREIN, TO REPAIR, REPLACEMENT OR REFUND.

In no event shall Newco be liable for any other damage or loss, including, but not limited to, lost profits, lost sales, loss of use of equipment, claims of Buyer's customers, cost of capital, cost of down time, cost of substitute equipment, facilities or services, or any other special, incidental or consequential damages.

WARNING: *Read and follow installation instructions before plugging or wiring in machine to electrical circuit. Warranty will be void if machine is connected to any voltage other than that specified on the serial tag. Machine must be plugged into a grounded outlet.*

SERVICING THE MACHINE

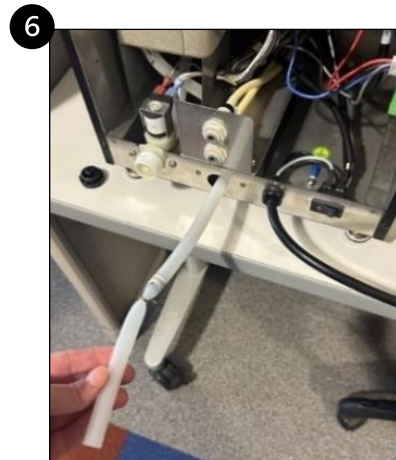
DRAINING THE HOT WATER TANK



WARNING:

Disconnect brewer from power & allow hot water to cool completely before attempting to drain water tank!

1. Disconnect brewer from power & allow hot water tank to cool completely.
2. Once the brewer has cooled, locate the drain plug on the back panel next to the water inlet valve assembly.
3. Fully extend the drain tube by gently pulling the plug and tube assembly outward.
4. Firmly pull the drain plug from the end of the drain tube to remove.
5. Direct drain tube into a container or drain. Ensure your hands are away from the end of the tube.
6. Slide the tube clamp to release the water.
7. Once the water has finished draining, slide the clamp back to close off the drain tube.
8. Insert the drain plug onto the end of the drain tube.



Direct tube into a container or drain **BEFORE** sliding tube clamp!

WHIPPER MAINTENANCE INSTRUCTIONS

For Bistro Touch Large Capacity

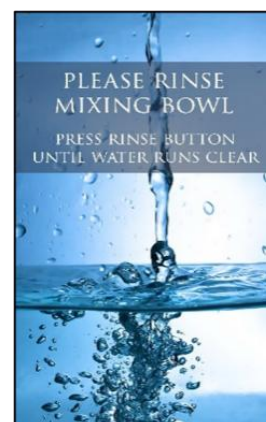
Daily Cleaning

A rinse of the whipper should be performed multiple times a day.

Additionally, whenever the hoppers of the machine are put back into place after removal, the machine display will prompt a rinse cycle to be run.

Rinse Cycle Procedure

1. Open the door to the brewer & place a cup under the dispense nozzle.
2. Press the **RINSE** button located to the side of the whipper.
3. Hold the **RINSE** button until the water dispensed from the nozzle runs clear.
4. Discard the water dispensed during the rinse cycle.



Whipper Seal Cycle Count

Before beginning the physical maintenance of the whipper, it is important to check the status of the whipper seal cycle count in the Machine Programming → Maintenance menu.

The whipper seal needs to be replaced every **5000 cycles**.

1



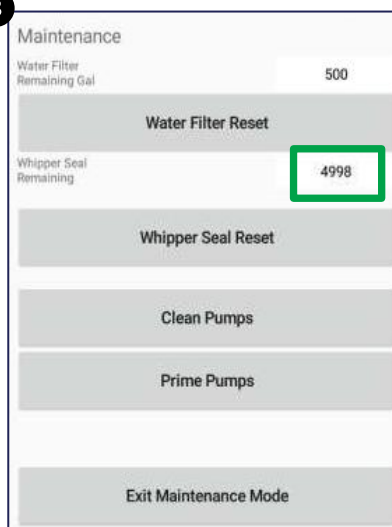
Tap where circled three times to enter the Programming Menu.

2



Select "Maintenance"

3



Do not press "Whipper Seal Reset" unless you are replacing the Whipper Seal!

NOTE: You must press "Exit Maintenance Mode" then "Exit Programming" before turning off machine power!

WHIPPER MAINTENANCE INSTRUCTIONS

For Bistro Touch Large Capacity

To Remove the Whipper Parts from the Machine



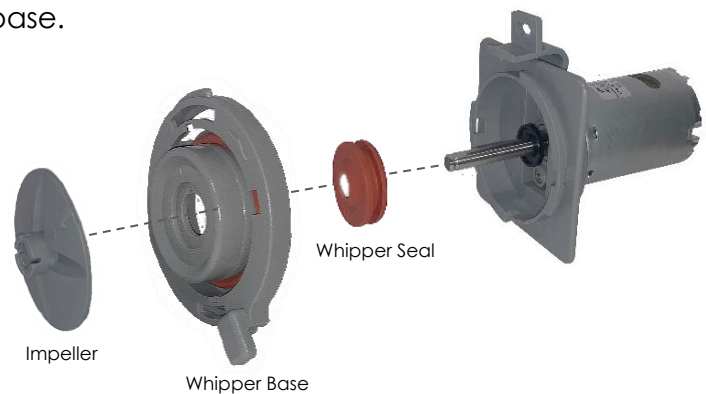
WARNING:

Disconnect brewer from power before servicing or installing machine components!

1. Run a rinse cycle to remove any powder from the whipper bowl.
2. Turn machine power **OFF** & disconnect brewer from power.
3. Turn hopper elbows upwards.
4. Disconnect dispense nozzle from whipper & remove the whipper cap.
5. While holding onto the whipper bowl, turn the knob of the base counterclockwise from the 6 o'clock position to the 5 o'clock position.
6. Pull whipper bowl away from the machine.



7. Remove the impeller from the motor shaft.
Note: The impeller is set securely in place. You may need a bit of force to remove it.
8. Turn the knob on the base counterclockwise from the 5 o'clock position to the 4 o'clock position to unlock it from the motor. You may need to wiggle the base to remove it from the motor shaft.
9. Push the whipper seal out of the whipper base.



Cleaning the Whipper Assembly

Wash all whipper components with warm soapy water & thoroughly rinse. Wipe down the motor shaft with warm soapy water to remove all old lubrication. Ensure all components are completely dry before reassembly.

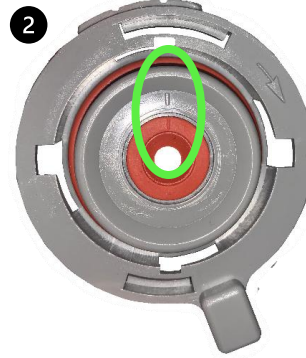
WHIPPER MAINTENANCE INSTRUCTIONS

For Bistro Touch Large Capacity

Reinstalling the Whipper Assembly

STEP ONE: SET THE WHIPPER SEAL INTO THE WHIPPER BASE

1. Locate the small, raised line on the whipper seal and the whipper base.
2. With the raised indicators aligned, press the conical side of the whipper seal into the back of the whipper base. See images below.



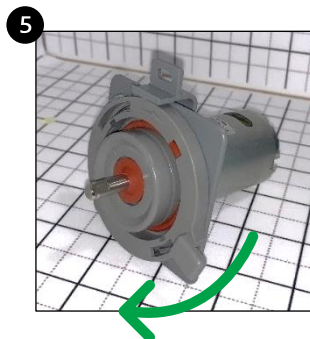
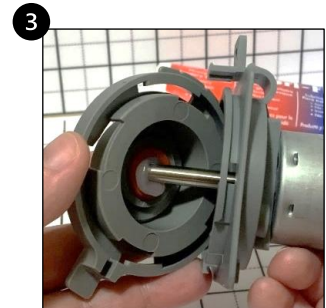
WARNING

If the indicator marks are not aligned properly, whipper seal will not be fully seated on the whipper base.

Whipper seal will become misshapen, impacting the performance & lifespan of the entire brewer.

STEP TWO: LUBRICATE WHIPPER SEAL & INSTALL WHIPPER BASE ONTO WHIPPER MOTOR SHAFT

1. Cover the hole in the whipper seal with one finger.
2. Fill the seal with food grade lubricant (**PN 900039**)
3. Slide the base & seal onto the motor shaft.
4. Turn the whipper base so that the notch is in the 5 o'clock position.



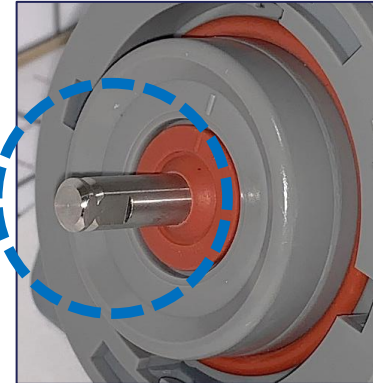
WHIPPER MAINTENANCE INSTRUCTIONS

For Bistro Touch Large Capacity

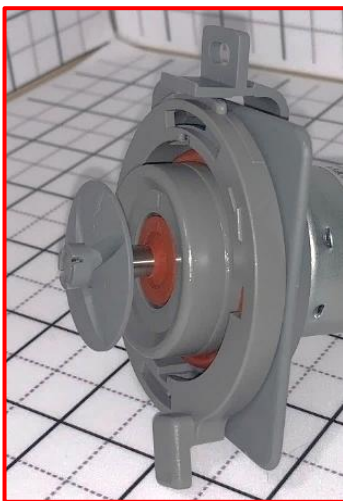
Reinstalling the Whipper Assembly *(continued)*

STEP THREE: INSTALL THE IMPELLER ONTO THE MOTOR SHAFT

1. Locate the arrow on the impeller & the flat section on the motor shaft.
2. With the front of the impeller (shown below) facing away from the motor, align the arrow indicator with the flat section of the motor shaft.



3. Slide the impeller onto the motor shaft. An audible click will be heard when the impeller is correctly set into place.



Not far enough



Proper placement



Too far

WHIPPER MAINTENANCE INSTRUCTIONS

For Bistro Touch Large Capacity

Reinstalling the Whipper Assembly *(continued)*

STEP FOUR: INSTALL THE WHIPPER BOWL ONTO THE WHIPPER ASSEMBLY

1. Place whipper bowl into the groove of the whipper base.
2. Turn the knob of the whipper base clockwise from the 5 o'clock position to the 6 o'clock position.



STEP FIVE: REPLACE CAP & NOZZLE ONTO THE WHIPPER BOWL

1. Attach cap & nozzle to the whipper bowl.
2. Connect to appropriate parts in the brewer.



REPLACING THE PUMP HEADS

For Bistro Touch Large Capacity



WARNING:

Disconnect brewer from power before removing panels & servicing/installing machine components!

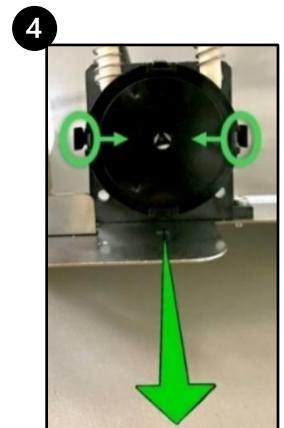
ACCESSING THE PUMP HEADS

1. Toggle brewer off & disconnect from power.
2. Disconnect BIB liquid concentrate. Remove liquid product from sidecar or cabinet.
3. Rotate hopper elbows upward and remove product hoppers from cabinet.
4. Use a Phillips head screwdriver to loosen the three screws holding the product shelf in place. Remove shelf and set aside.



REMOVING THE PUMP HEADS

1. Remove the wireform clip from two-product mixing chamber.
2. Rotate the two-product mixing chamber so that pump check valves are unobstructed from mixing chamber bracket.
3. Pull out pump tube from two-product mixing chamber ensuring that the check valve comes out fully. Disconnect other tube from John Guest fitting inside of brewer cabinet.
4. Pinch left and right side clasps inward on the pump head and pull straight back to remove.

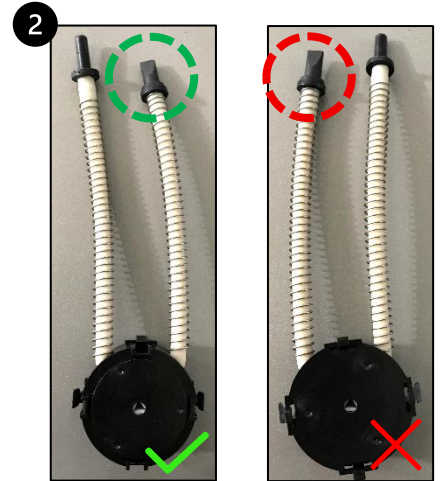
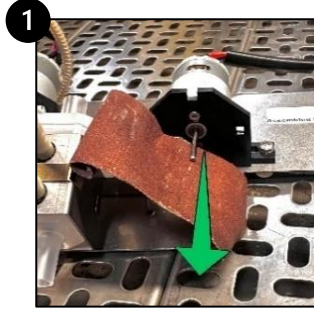


REPLACING THE PUMP HEADS

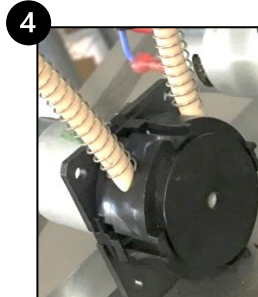
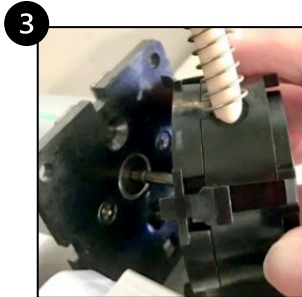
For Bistro Touch Large Capacity

REPLACING THE PUMP HEADS

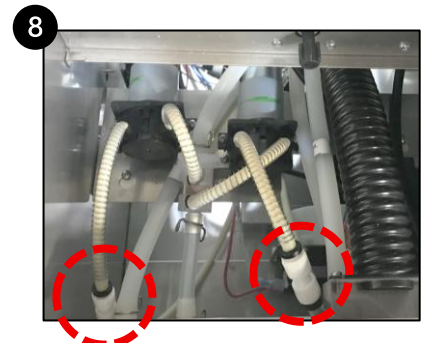
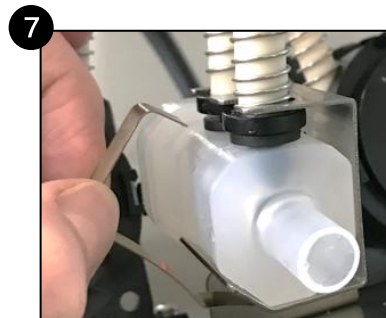
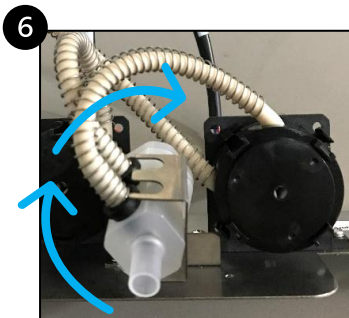
1. Prep the motor shaft by buffing **directly outward** with emery cloth.
2. Position the new pump head assembly so that the tube with the **duck bill tip** is on the **RIGHT** side.



3. Align the motor shaft with the pump head assembly hole. Hold assembly at a 45-degree angle and apply pressure until it slides onto the shaft.
4. Press the new pump head assembly onto the shaft until you hear an audible click. *(click indicates that the Left / Right clasps are properly latched into place.)*
5. Detach duck bill check valve from new pump assembly. Insert check valve into mixing chamber, then insert **RIGHT** side tube stem into check valve.

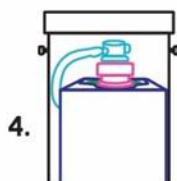


6. Rotate two-product mixing chamber back into position, ensuring that check valves and plastic stems are positioned **UNDER** mixing chamber bracket.
7. Replace the wireform clip on to the two-product mixing chamber.
8. Insert the other tube from the new pump head assembly into the appropriate John Guest fitting.



SIDE CAR ACCESSORY PRODUCT INSTALLATION

PRODUCT INSTALLATION



1. Open product box.
2. Remove the plastic insert from the BIB fitment.
3. Using finger and thumb only to prevent over-tightening, thread the BIB connector on to the BIB fitment until seated.
4. Place product in sidecar with BIB facing up. slide into place and replace door.

PN: 128335

MACHINE PARTS

EXTERIOR



1	783092-BPC	PANEL, RIGHT SIDE EXTERIOR	1 EA
2	128148	LABEL, PLACE CUP, BISTRO TOUCH	1 EA
3	783078-BPC	PANEL, LEFT SIDE EXTERIOR	1 EA

	122054	DRIP TRAY ASSEMBLY, BISTRO*	1 EA
4	128114	GRID, DRIP TRAY	1 EA
5	122052-CH	DRIP TRAY, BISTRO	1 EA

*Assembly includes Drip Tray Grid (PN 128114) & plastic Drip Tray (PN 122052-CH)

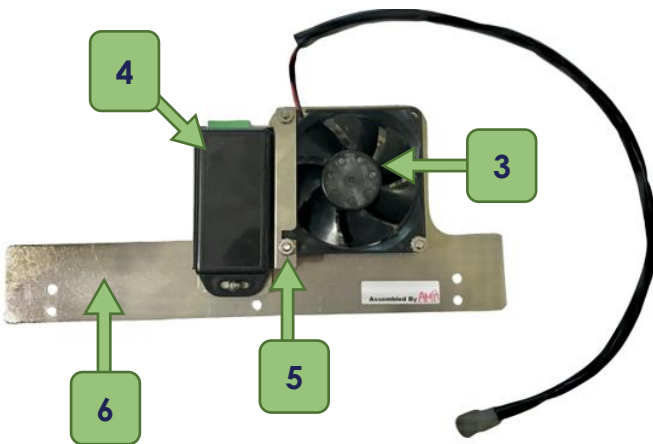
SIDE CAR ACCESSORY



	128269-BPC	SIDECAR ACCESSORY, BISTRO TOUCH LARGE CAPACITY	
1	128270-BPC	DOOR, SIDE CAR ASSEMBLY	1 EA
2	128335	LABEL, BAG IN BOX INSTRUCTIONS, SIDECAR*	1 EA
3	102065	MAGNET, DOOR	1 EA
4	205083	BULKHEAD UNION	2 EA
5	128307	TUBE ASSEMBLY WITH SCHOLLE CONNECTORS	2 EA
6	128304	EXTERNAL TUBES, 20", BISTRO LARGE	2 EA

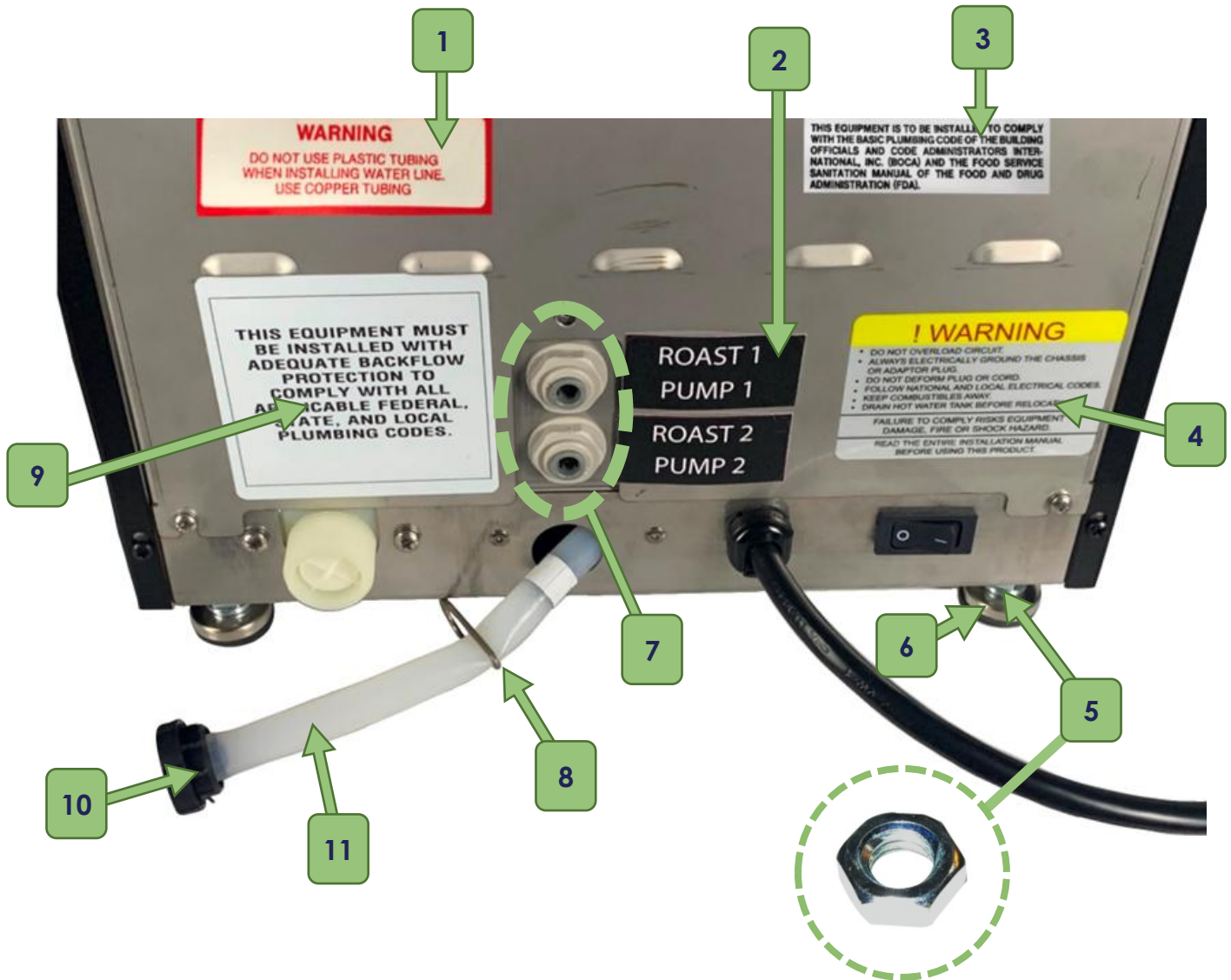
* See pg. 13 for more information

BACK PANEL



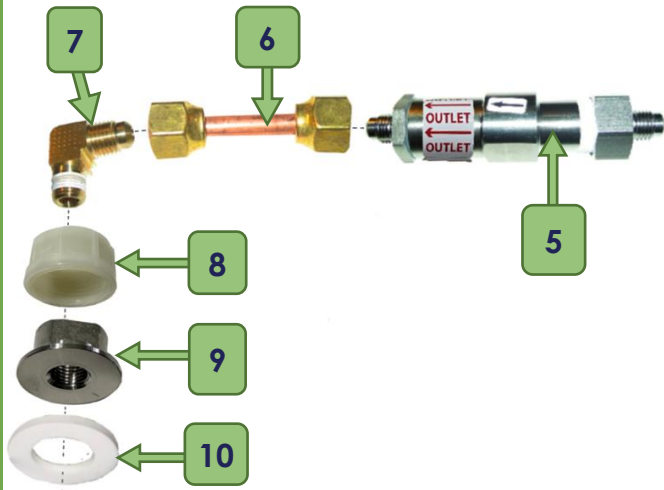
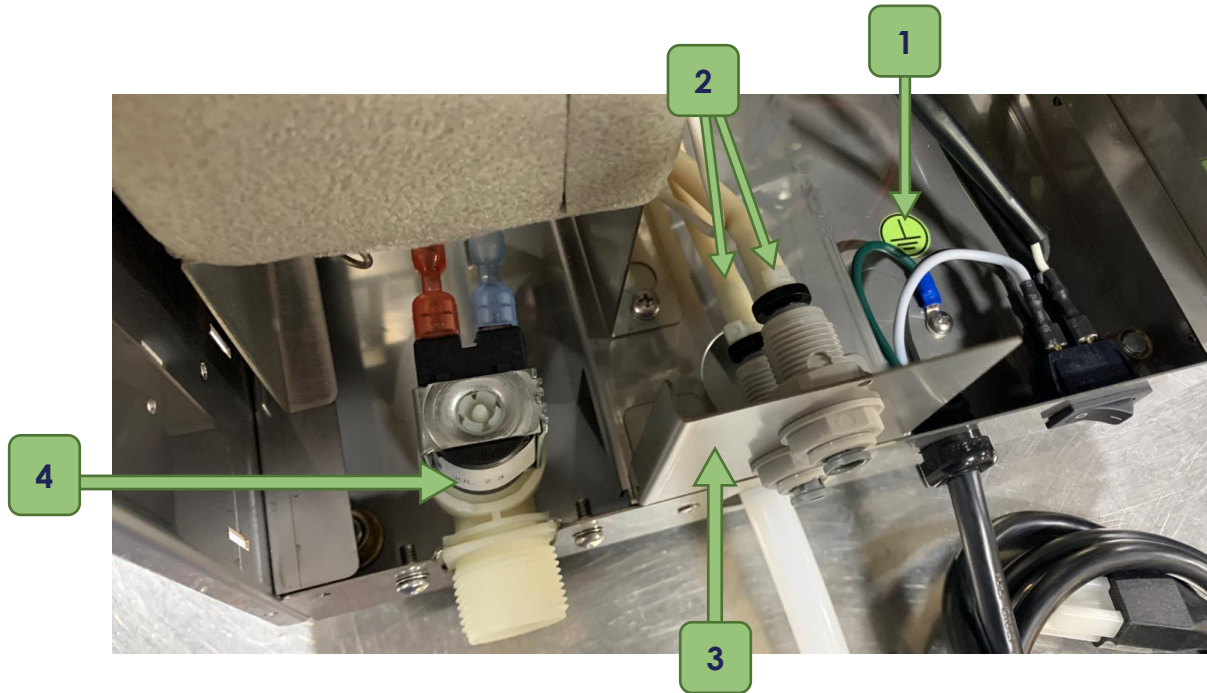
1	100821	LABEL, WARNING, ELECTRIC SHOCK	1 EA
2	128360	PANEL, BACK, BISTRO LARGE CAPACITY	1 EA
3	103600	FAN WITH HARNESS	1 EA
4	122165	CONVERTER, POWER ASSEMBLY 24AC/ 12DC	1 EA
5	122186	BRACKET, MOUNTING AD/DC ADAPTOR	1 EA
6	128342	BRACKET, MOUNTING, FAN	1 EA

BACK PANEL



1	101025	LABEL, WARNING AUTO FAUCET	1 EA
2	128313	LABEL SET, PUMP/ROAST 1&2	1 EA
3	101012	LABEL, PLUMBING INSTRUCTIONS	1 EA
4	100817	LABEL, WARNING, PRECAUTIONS	1 EA
5	111667	NUT, 3/8-16	4 EA
6	111377	APPLIANCE FOOT	4 EA
7	205083	BULKHEAD UNION	2 EA
8	120578	CLAMP, DRAIN	1 EA
9	123062	LABEL, BACKFLOW PREVENTION	1 EA
10	120575	PLUG, TANK DRAIN	1 EA
11	121449	DRAIN TUBE	1 EA

INLET AREA



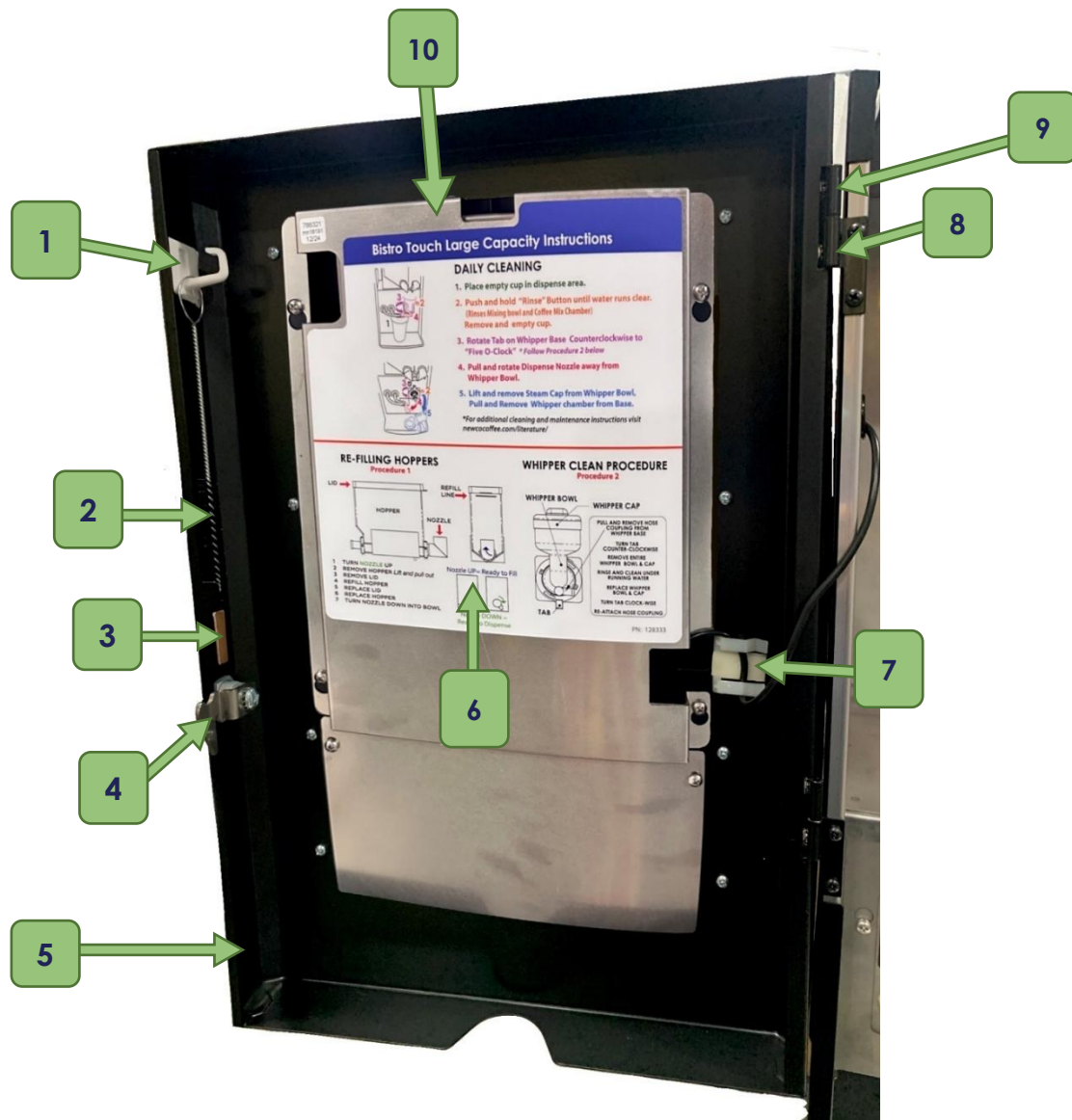
1	101037	DECAL, GROUND SYMBOL	1 EA
2	128304	EXTERNAL TUBES, 20", BISTRO LARGE	2 EA
3	128289	PLATE, ADAPTOR FITTING, BISTRO	1 EA
4	201175	SOLENOID VALVE ASSEMBLY	1 EA
5	202103	STRAINER ASSEMBLY, 1/4FL, S/S	1 EA
6	704209	TUBE ASSEMBLY	1 EA
7	100177	ELBOW, MALE, 1/4FX1/8	1 EA
8	111177	NUT, PLASTIC	1 EA
9	101377	FITTING, SOLENOID, TIN PLATED	1 EA
10	111178	GASKET	1 EA

DOOR



	128334	DOOR ASSEMBLY	1 EA
1	128285	TABLET, BISTRO,10IN, PRETECH	1 EA
2	122051	DOOR FRAME, BISTRO TOUCH, PLASTIC	1 EA
3	123654	LABEL ,BISTRO TOUCH, PRETECH	1 EA
4	120558	LOCK ASSEMBLY	1 EA
5	121828	KEYS, LOCK ASSEMBLY	1 EA

DOOR



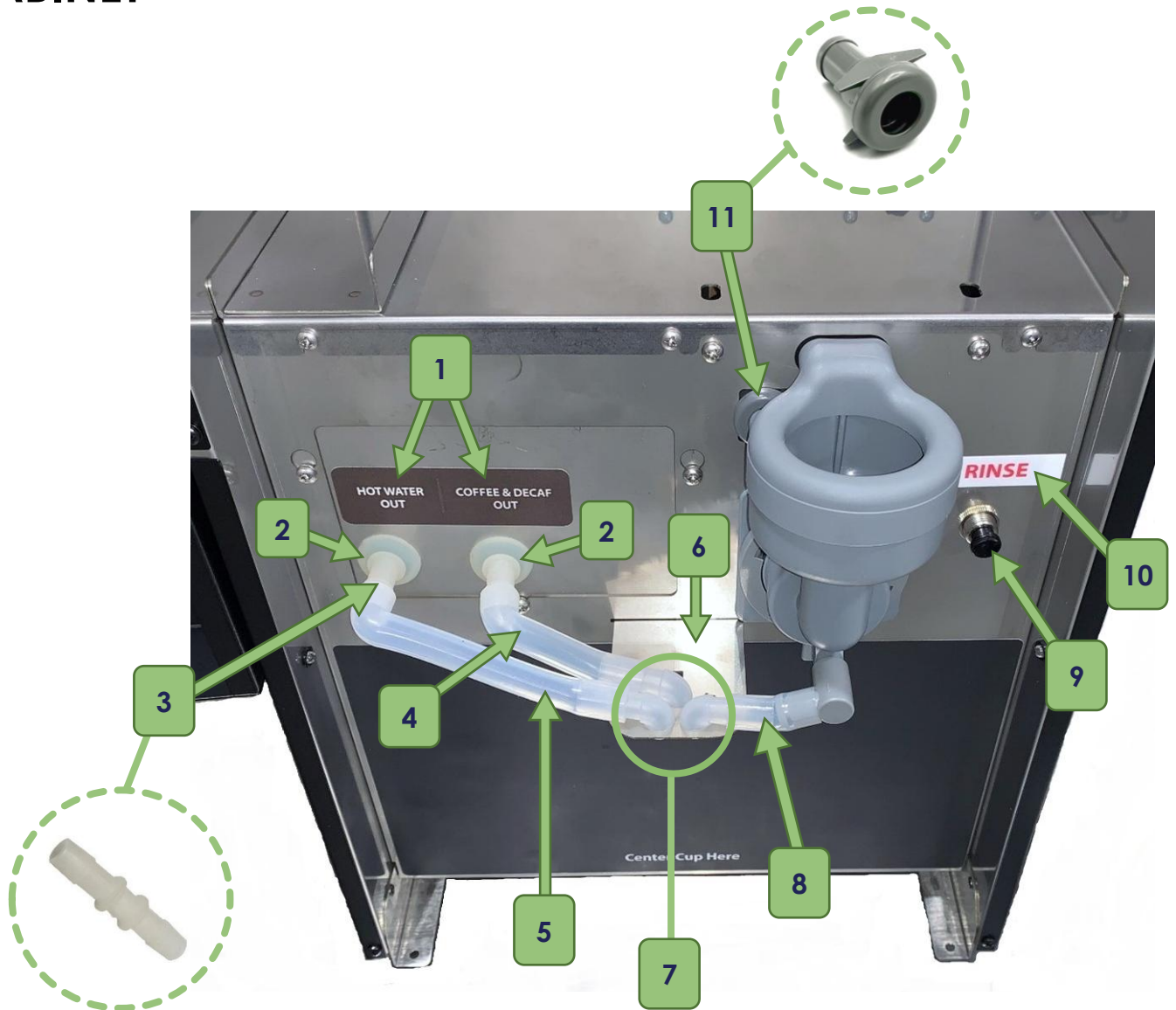
1	104023	HOOK,BRUSH HOLDER	1 EA
2	111622	BRUSH	1 EA
3	121301	MAGNET,1/2*1-IN*1/4	1 EA
4	128193	LATCH, EXTENDED ARM, BISTRO TOUCH	1 EA
5	128126-BPC	PANEL, DOOR, BPC, BISTRO TOUCH	1 EA
6	128333	LABEL,CLEANING INSTRUCTIONS	1 EA
7	781697	CLAMP, ADHESIVE	1 EA
8	781258-B	HINGE,MALE, BLACK, CAPPUCCINO	2 EA
9	781259-B	HINGE, FEMALE, BLACK, CAPPUCCINO	2 EA
10	128182	COVER, TABLET, 10IN, BISTRO	1 EA
N/S	128237	BRACKET, TABLET, 10",BIS/LC,P/T,SS	1 EA

CABINET



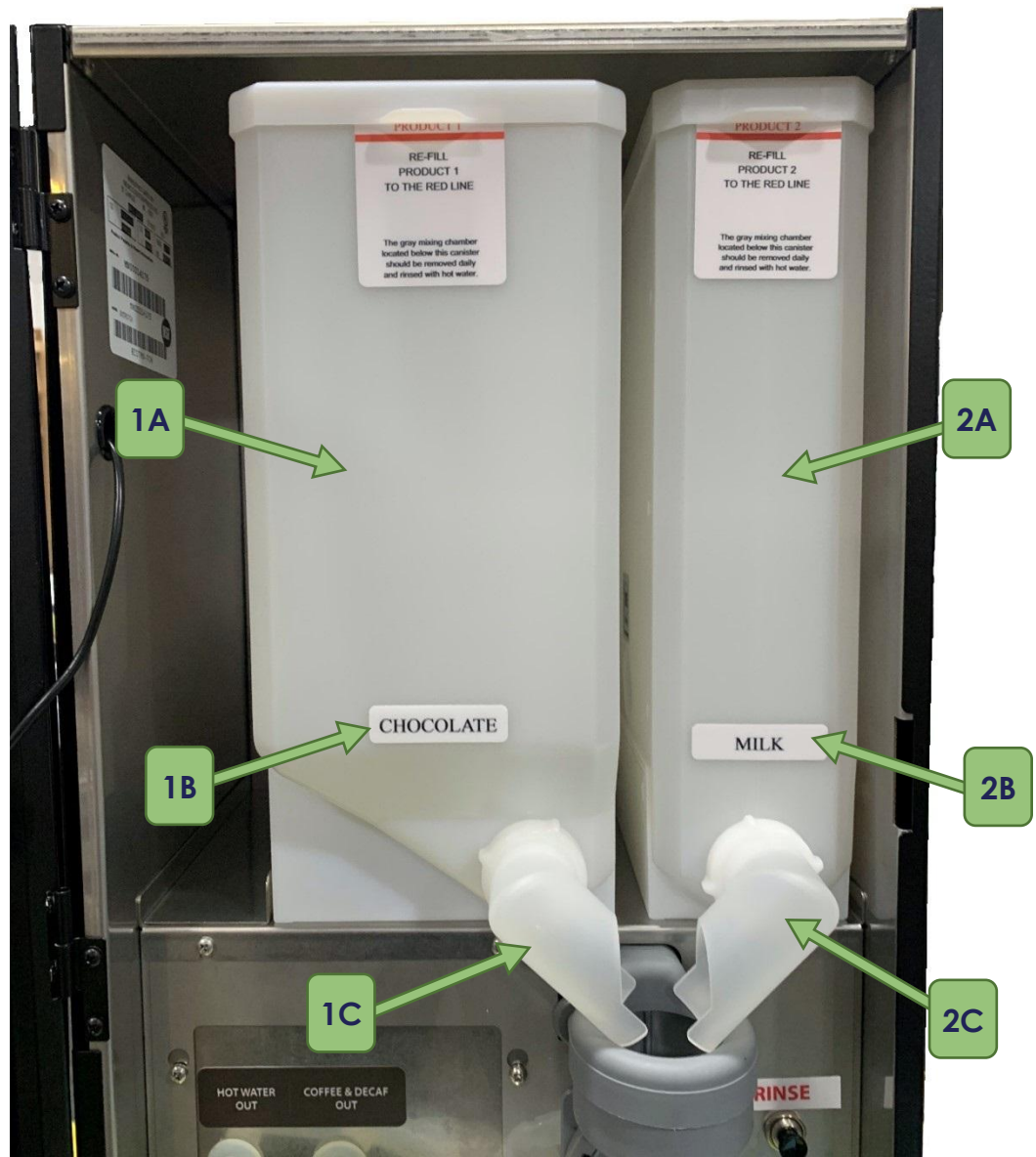
1	103416	SWITCH, MOMENTARY, PUSH/PULL	2 EA
2	123056	LABEL, MILK, HOPPER, BISTRO	1 EA
3	123057	LABEL, CHOCOLATE, HOPPER, BISTRO	1 EA
4	128294	HOPPER, SHELF GUIDE ASSEMBLY	1 EA

CABINET



1	128262	LABEL, HOT WATER OUT/ COFFEE AND DECAF OUT	1 EA
2	101938	GROMMET	2 EA
3	123068	COUPLER	2 EA
4	128154	TUBE, SILICONE, RIGHT ANGLE, 2.50"	1 EA
5	123118	TUBE, SILICONE, RIGHT ANGLE, 4.0"	1 EA
6	123017	BRACKET, HOSE POSITION, BISTRO	1 EA
7	123018	NOZZLE, DISPENSE, BISTRO	3 EA
8	123054	TUBE, SILICONE, 1.25"	1 EA
9	100343-10	RINSE BUTTON	1 EA
10	400526	RINSE LABEL	1 EA
11	781040	BULKHEAD, CAPPAC WATER (1 of 2)	2 EA

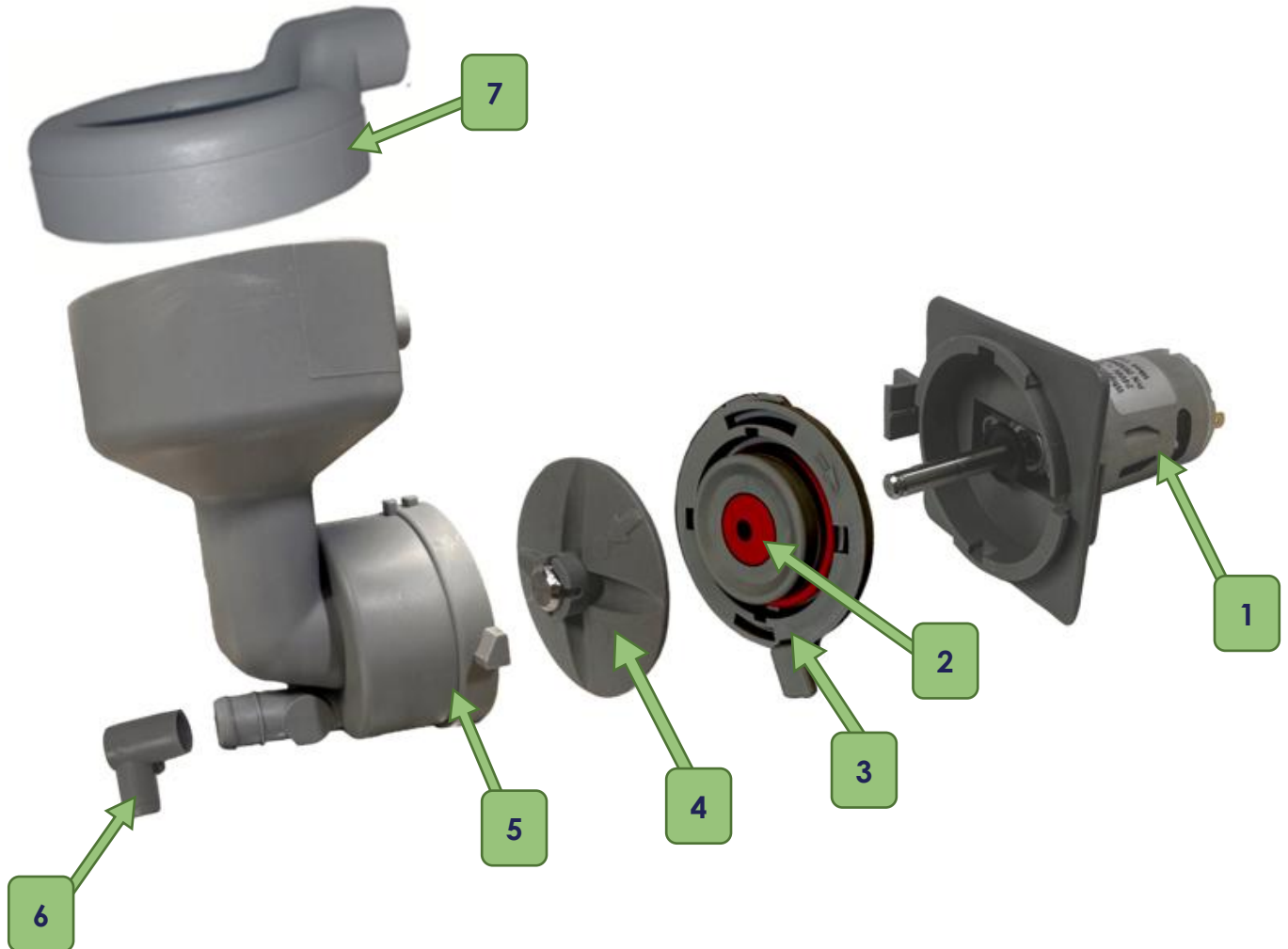
HOPPERS



	128314	HOPPER ASSEMBLY, LEFT HAND, BISTRO TOUCH	1 EA
1A	128315	HOPPER ASSEMBLY, 8LB	1 EA
1B	123057	LABEL, CHOCOLATE HOPPER	1 EA
1C	767201	HOPPER ELBOW, LEFT	1 EA

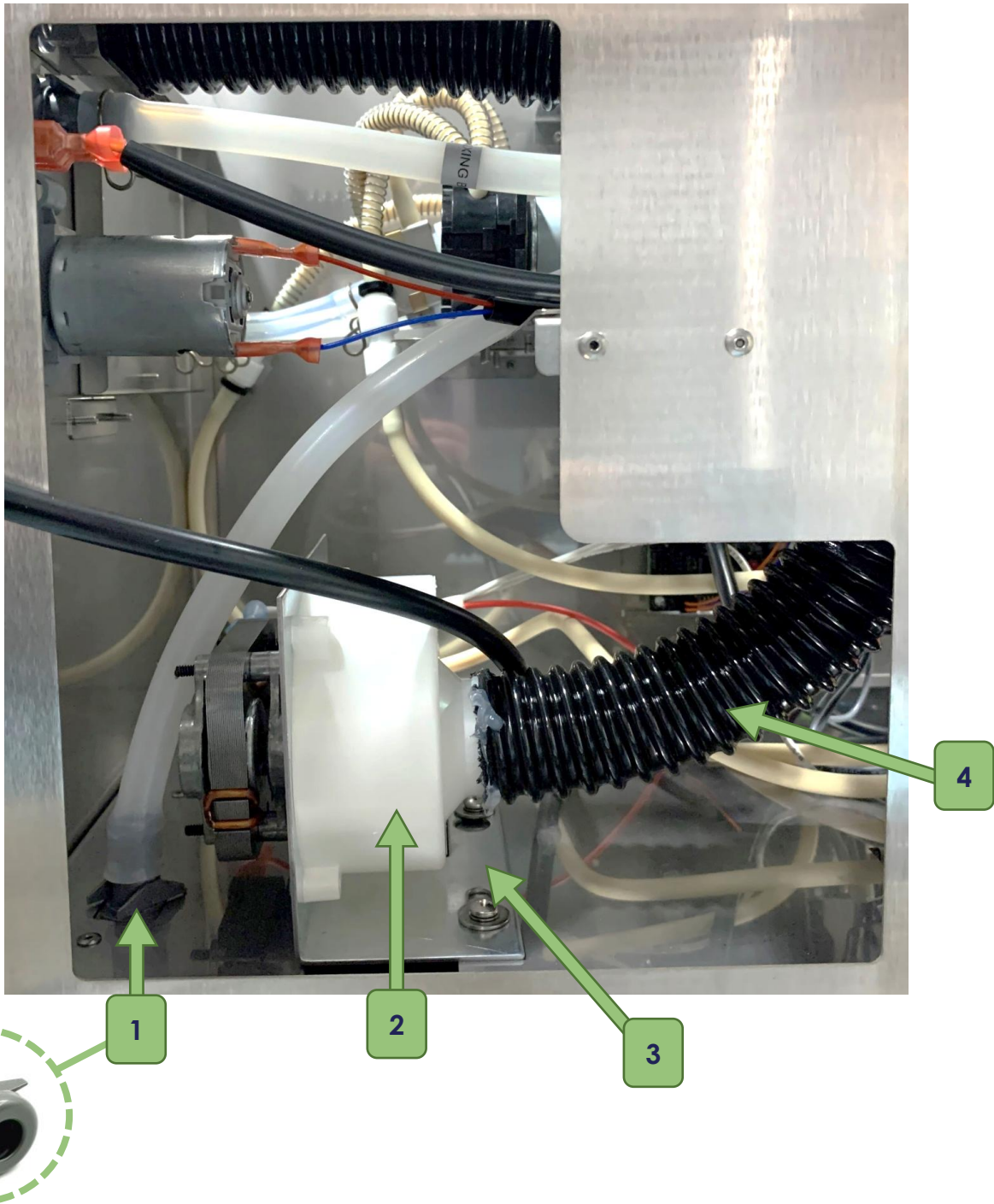
	128112	HOPPER ASSEMBLY, RIGHT HAND, BISTRO TOUCH	1 EA
2A	128144	HOPPER ASSEMBLY, 4LB	1 EA
2B	123056	LABEL, MILK HOPPER	1 EA
2C	767202	HOPPER ELBOW, RIGHT	1 EA

WHIPPER



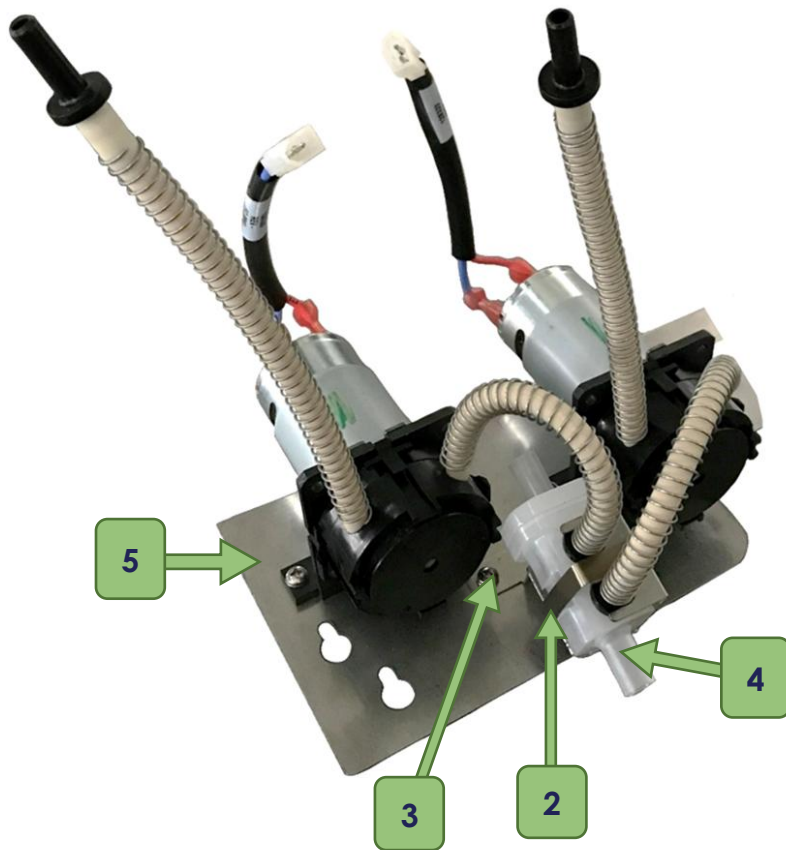
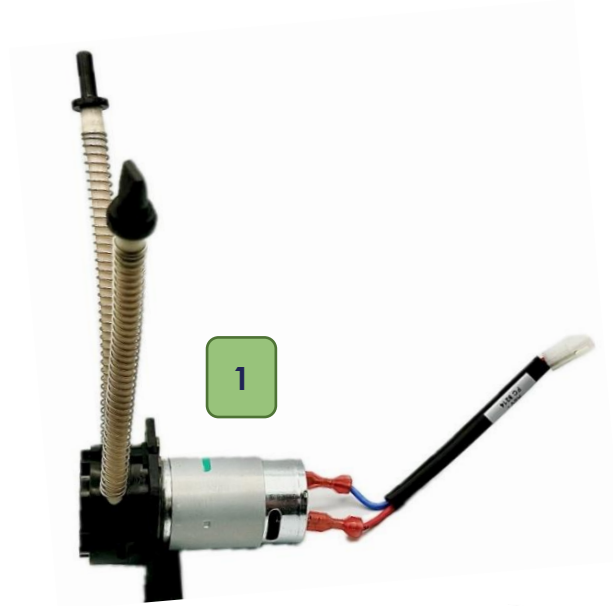
	767377	WHIPPER ASSEMBLY	1 EA
1	767195	MOTOR, WHIPPER	1 EA
2	781566	WHIPPER SEAL	1 EA
3	767196	BASE, WHIPPER	1 EA
4	767197	IMPELLER, WHIPPER	1 EA
5	767365	BOWL, WHIPPER	1 EA
6	767200	NOZZLE, WHIPPER	1 EA
7	767376	CAP, STEAM, WHIPPER	1 EA

FAN MOTOR



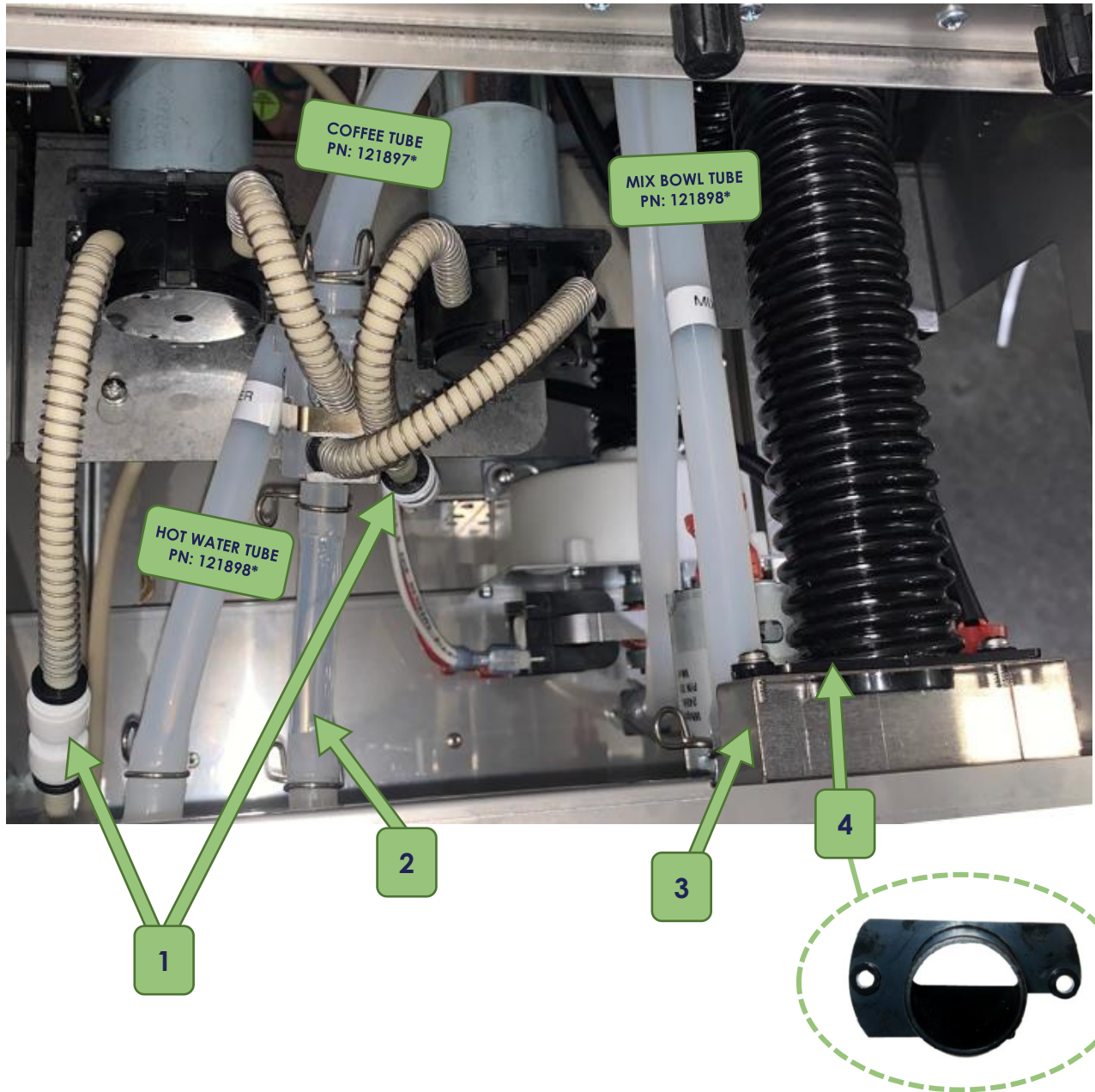
1	781040	BULKHEAD, CAPPAC WATER (2 of 2)	2 EA
2	781647	MOTOR, BLOWER, MINI CAPP	1 EA
3	128163	SUPPORT, BLOWER, BISTRO TOUCH	1 EA
4	767398	HOSE, BLACK, PVC	1 EA

PUMPS



1	128303	PUMP W/ HARNESS & MOTOR	2 EA
2	120436	WIREFORM CLIP, MIXING CHAMBER	1 EA
3	128185	RETAINER, MIXING CHAMBER	1 EA
4	104161	CHAMBER, MIXING, DOUBLE STEM	1 EA
5	128168	BRACKET, MOUNT, PUMPS, BISTRO TOUCH	1 EA

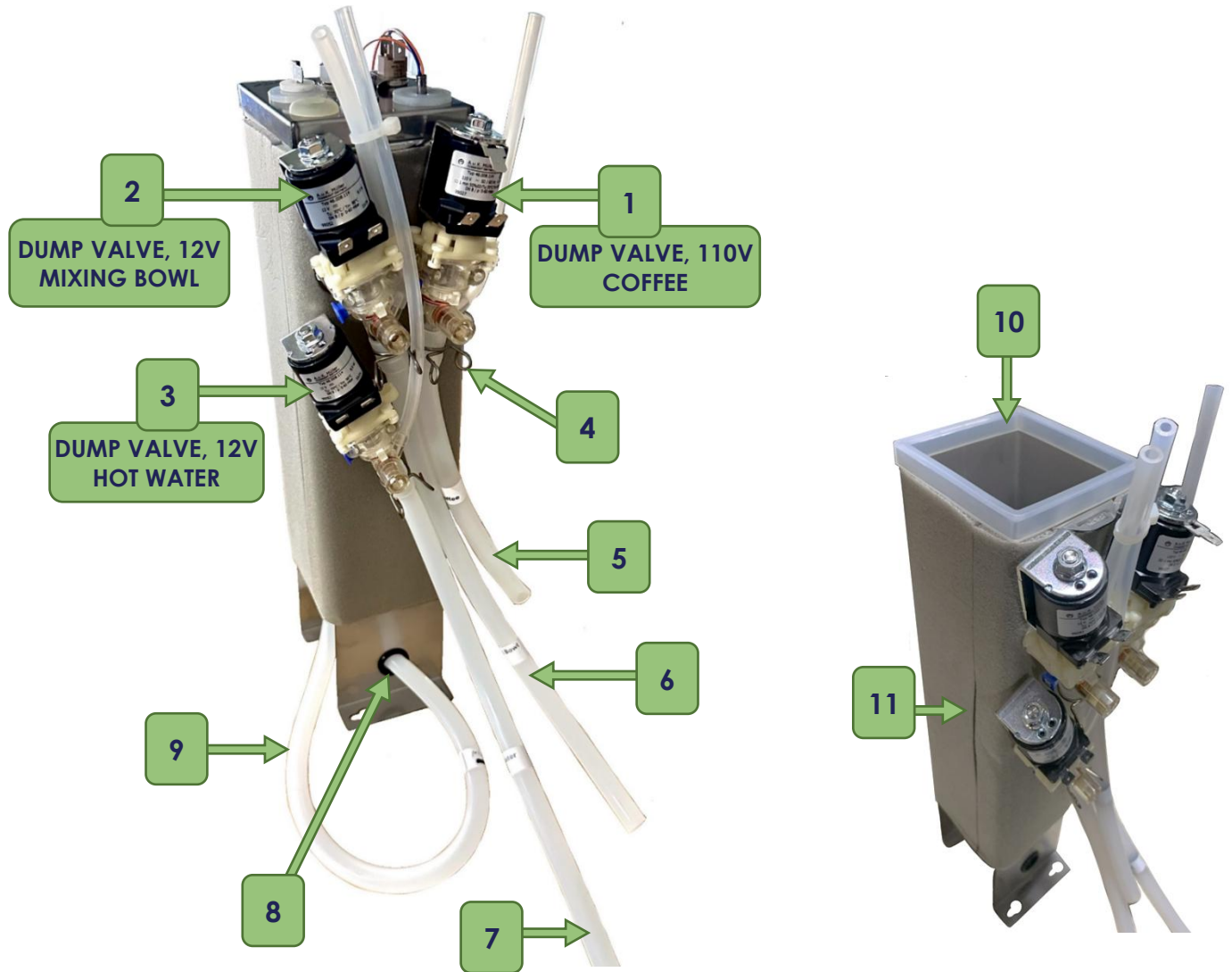
PUMPS



1	708131	JOHN GUEST QC UNION	2 EA
2	123132	SILICONE TUBE, 3.50"	1 EA
3	780084	BRACKET, SUCTION MOUNT	1 EA
4	781718	MANIFOLD, SUCTION, BISTRO	1 EA

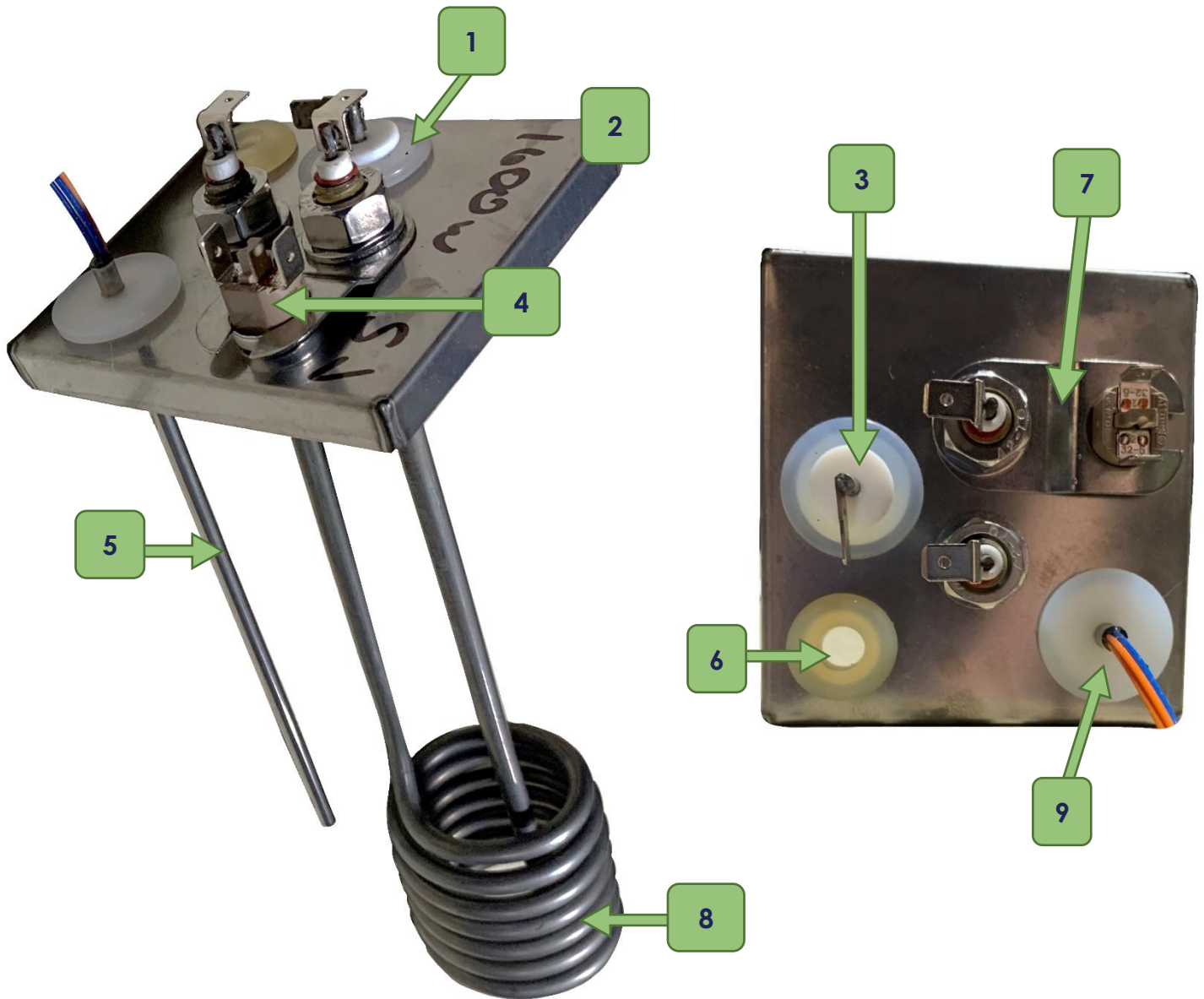
* See pg. 28 for more information

TANK ASSEMBLY



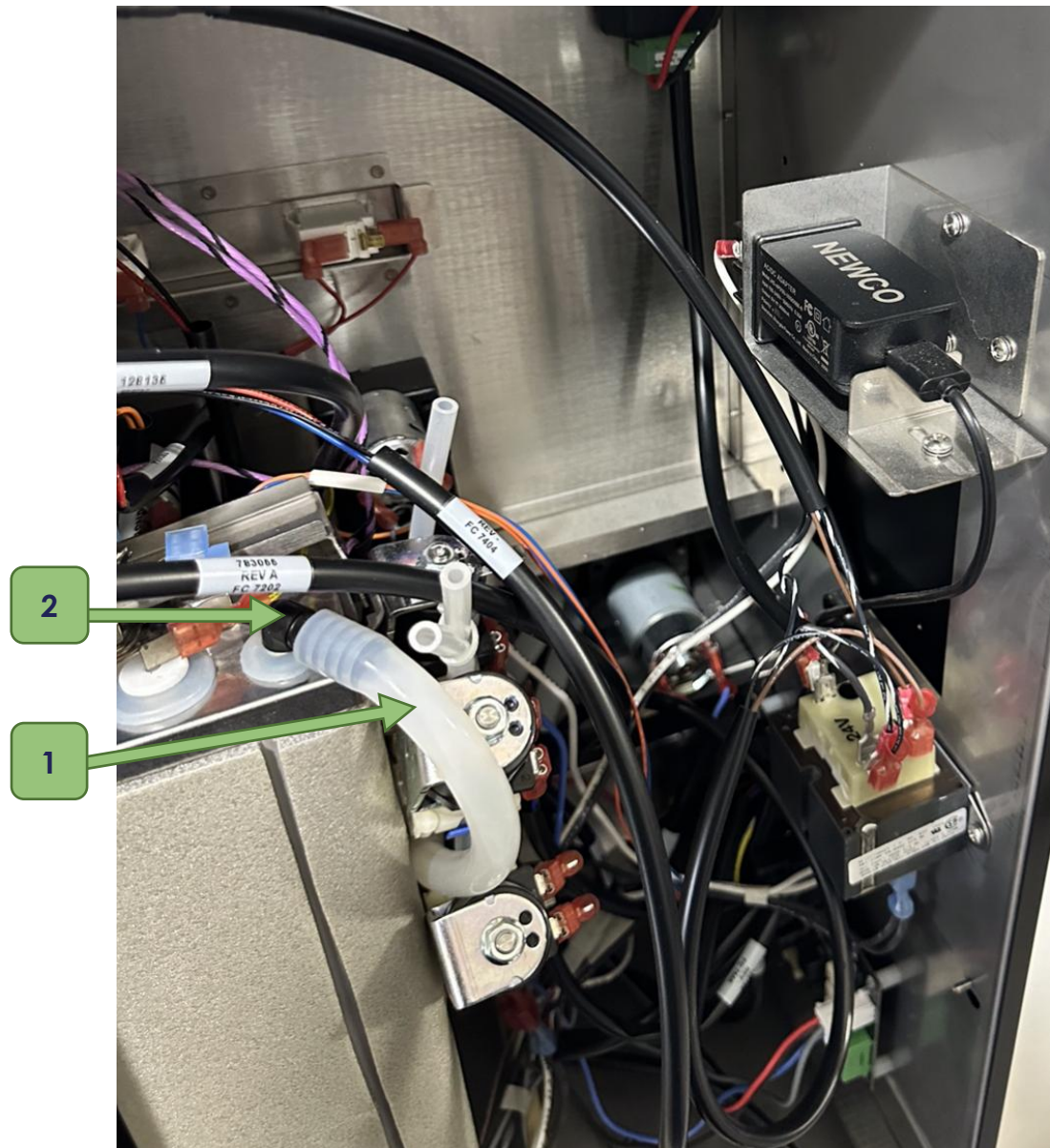
	128141	TANK ASSEMBLY	1 EA
1	123111	DUMP VALVE, MULLER, 110V & GROMMET (COFFEE)	1 EA
2	123110	DUMP VALVE, MULLER, 12V & GROMMET (MIXING BOWL)	1 EA
3	123117	DUMP VALVE, MULLER, 12V, WITH 8" VENT (HOT WATER)	1 EA
4	411039	CLAMP, HOSE, .510 ID	4 EA
5	121897	SILICONE TUBE, 8.375", COFFEE	1 EA
6	121898	SILICONE TUBE, 13.5", MIXING BOWL	1 EA
7	121898	SILICONE TUBE, 13.5", HOT WATER	1 EA
8	100003	BUSHING, SNAP, PLASTIC	2 EA
9	121449	SILICONE TUBE, 20", DRAIN TUBE	1 EA
10	120929	GASKET, TANK	1 EA
11	120898	TANK BODY	1 EA
N/S	121348	TUBE, SILICONE, RIGHT ANGLE	1 EA

TANK LID ASSEMBLY



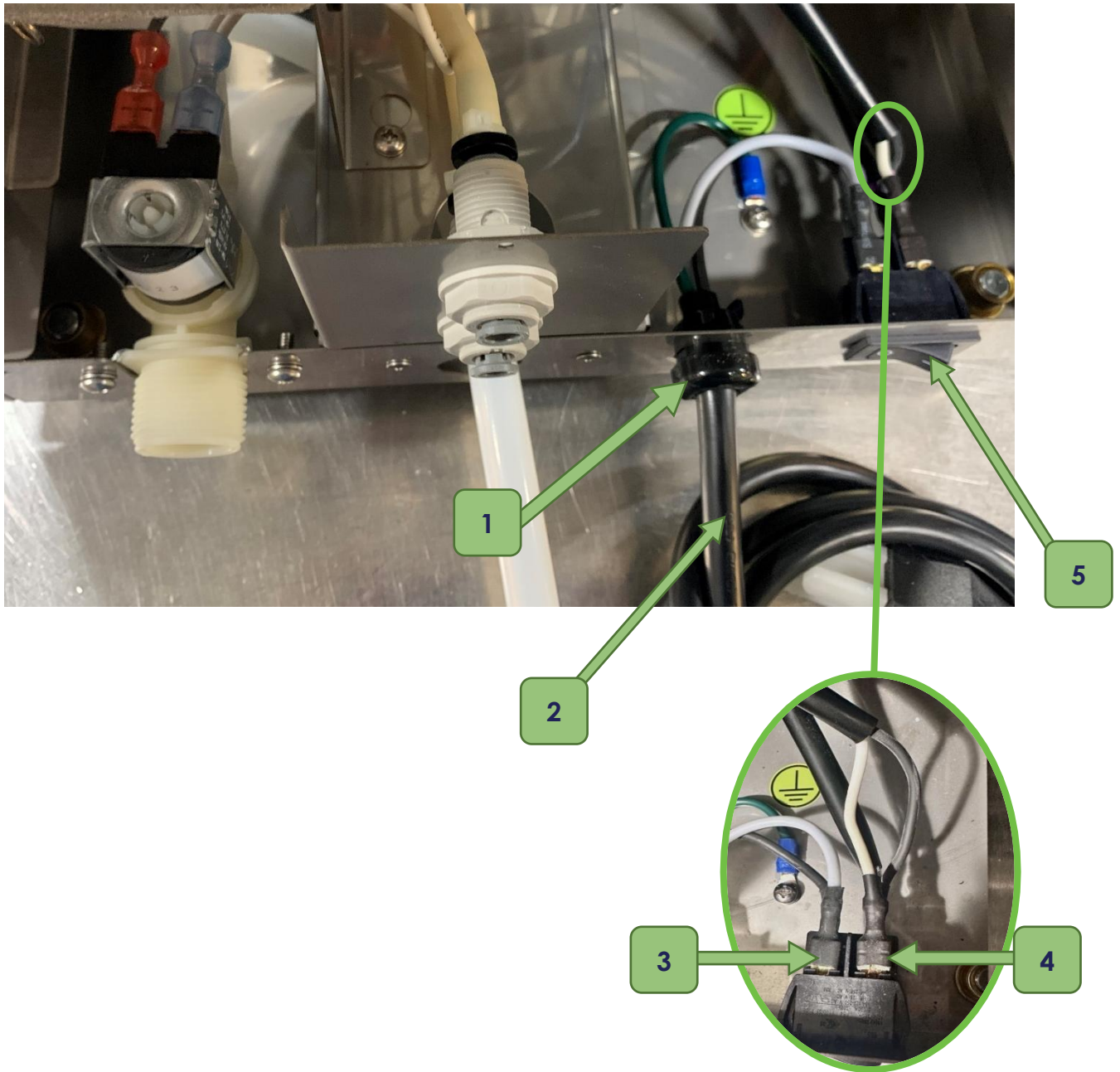
	120899	TANK LID ASSEMBLY, 1600W	1 EA
1	500350	GROMMET, PROBE, BUSHNG, 5/16	1 EA
2	120927	TANK LID, PUNCHED	1 EA
3	500398	KIT, PROBE, 1.818"	1 EA
4	111593	THERM, MAN,VERTAB	1 EA
5	151677	PROBE, TEMPERATURE, DUAL	1 EA
6	101938	GROMMET, SILICONE	1 EA
7	100269	BRACKET, HI-LIMIT	1 EA
8	120928	ELEMENT ASSEMBLY, 1600W, 120V	1 EA
9	500038	GROMMET, SILICONE, .060, NO SLIT	1 EA

OVERFLOW TUBE



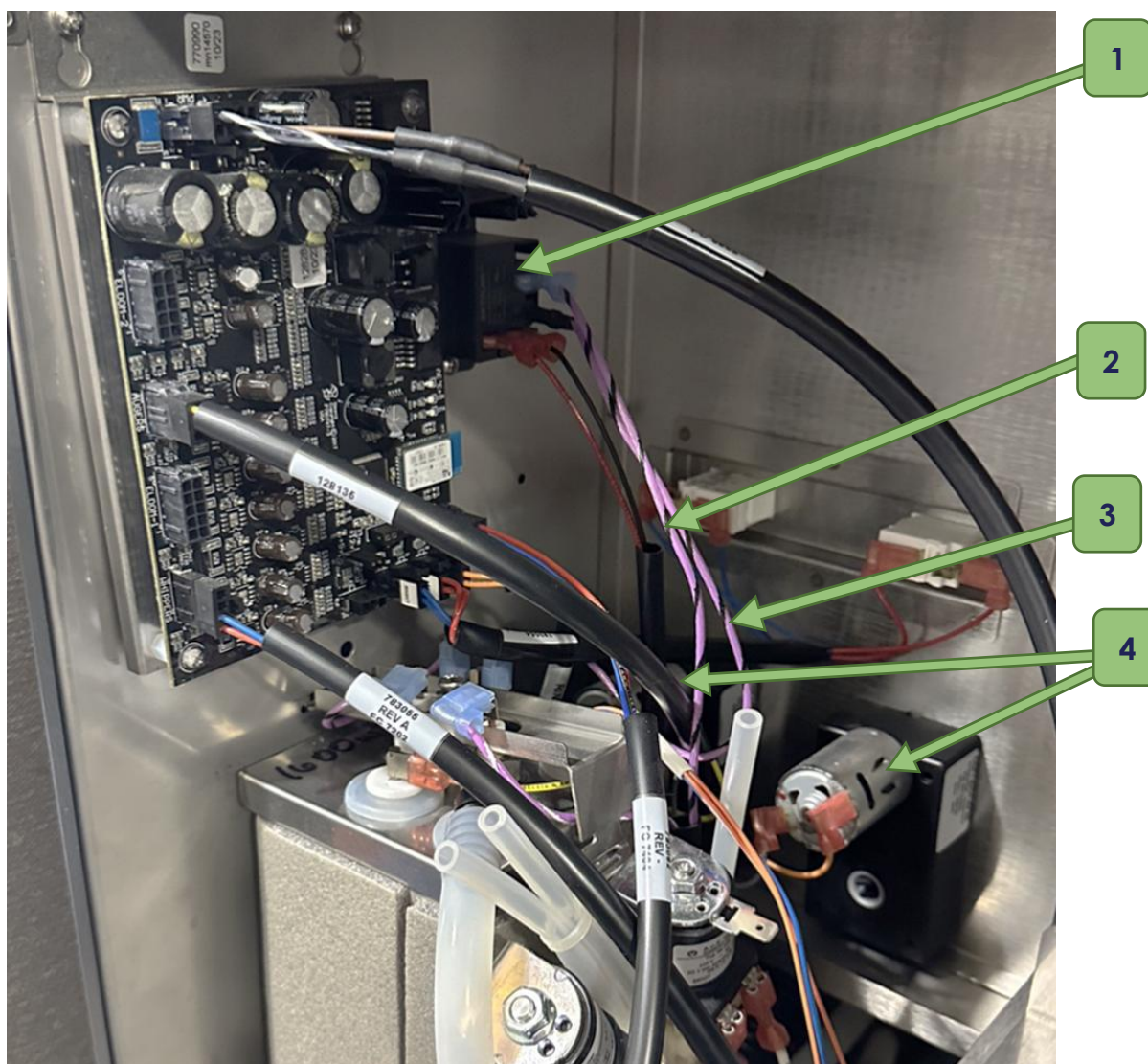
1	121895	OVERFLOW TUBE	1 EA
2	120159	ELBOW, 3/8X3/8	1 EA

MOTORS & ELECTRICAL COMPONENTS



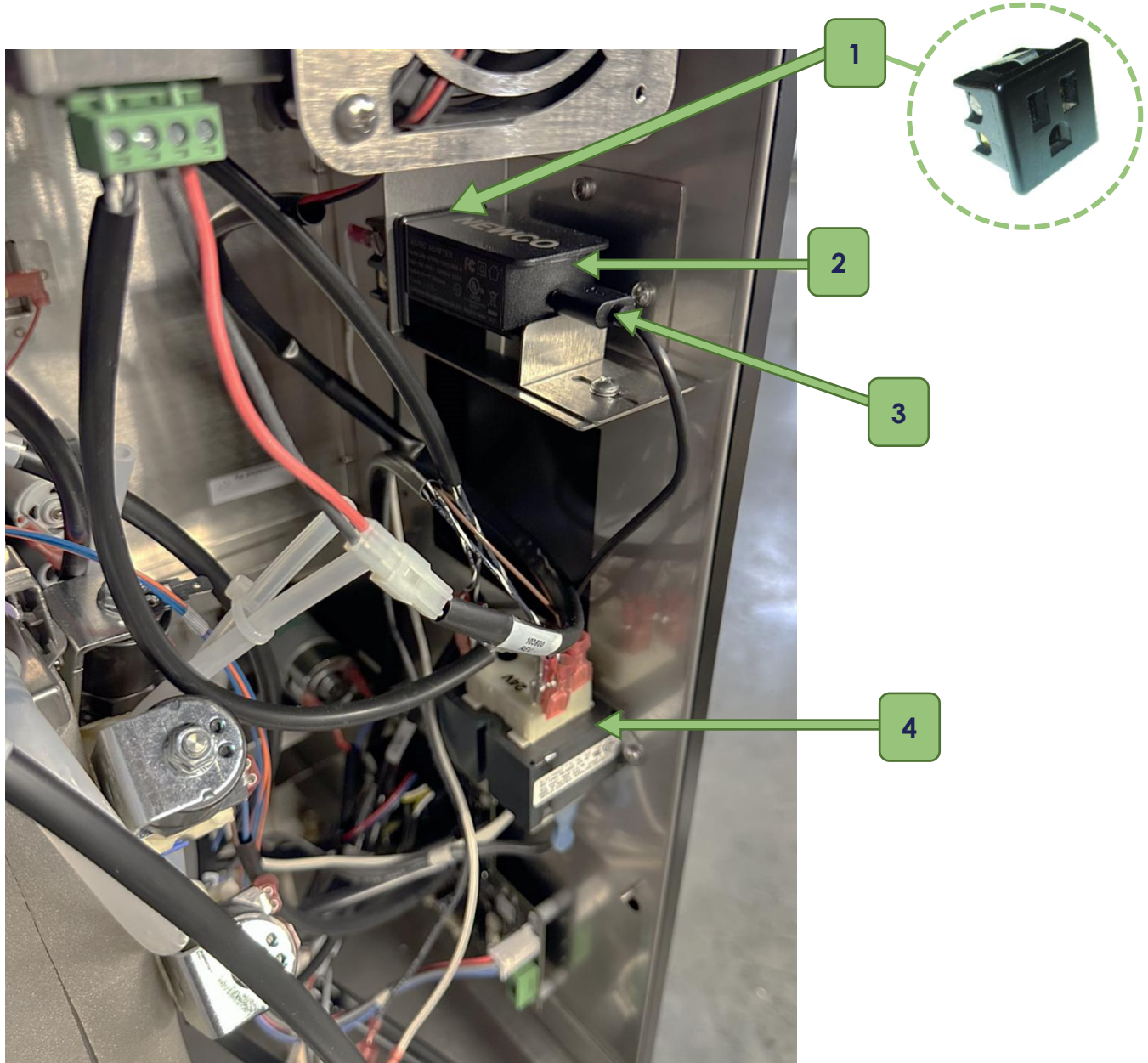
1	101035	GROMMET, STRAIN RELIEF, POWER CORD	1 EA
2	781843	POWER CORD	1 EA
3	128192	18GA WHITE TEF 6-5B POWER SWITCH	1 EA
4	128191	18GA BLACK TEF 6-5B POWER SWITCH	1 EA
5	110626	POWER SWITCH	1 EA

MOTORS & ELECTRICAL COMPONENTS



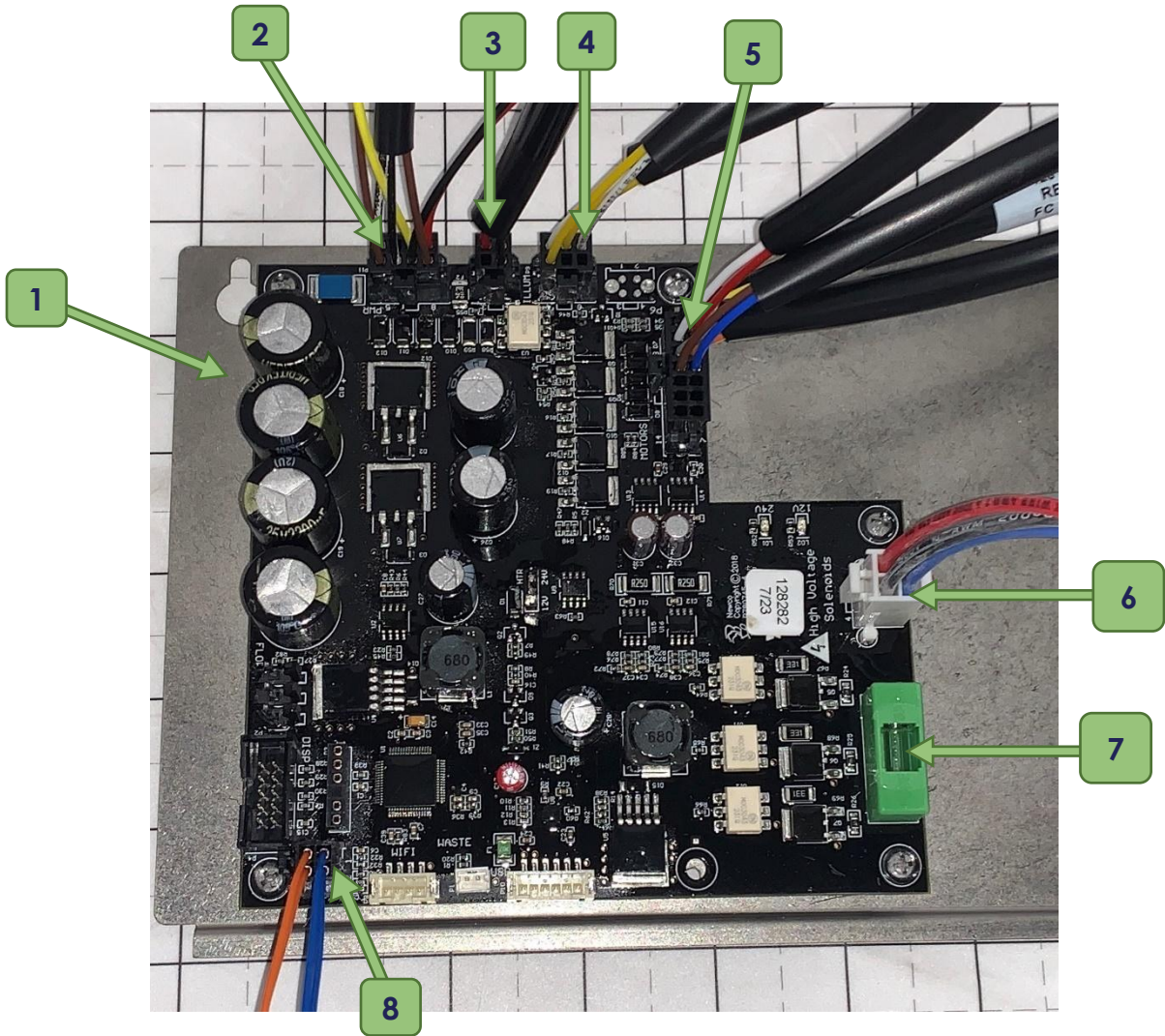
1	122091	RELAY,12VDC	1 EA
2	103016	14GA VIOLET/BLACK 10 TEF 1S-2N	1 EA
3	120580	14GA VIOLET/BLACK 5 TEF 2-2	1 EA
4	781587	MOTOR, AUGER	2 EA

MOTORS & ELECTRICAL COMPONENTS



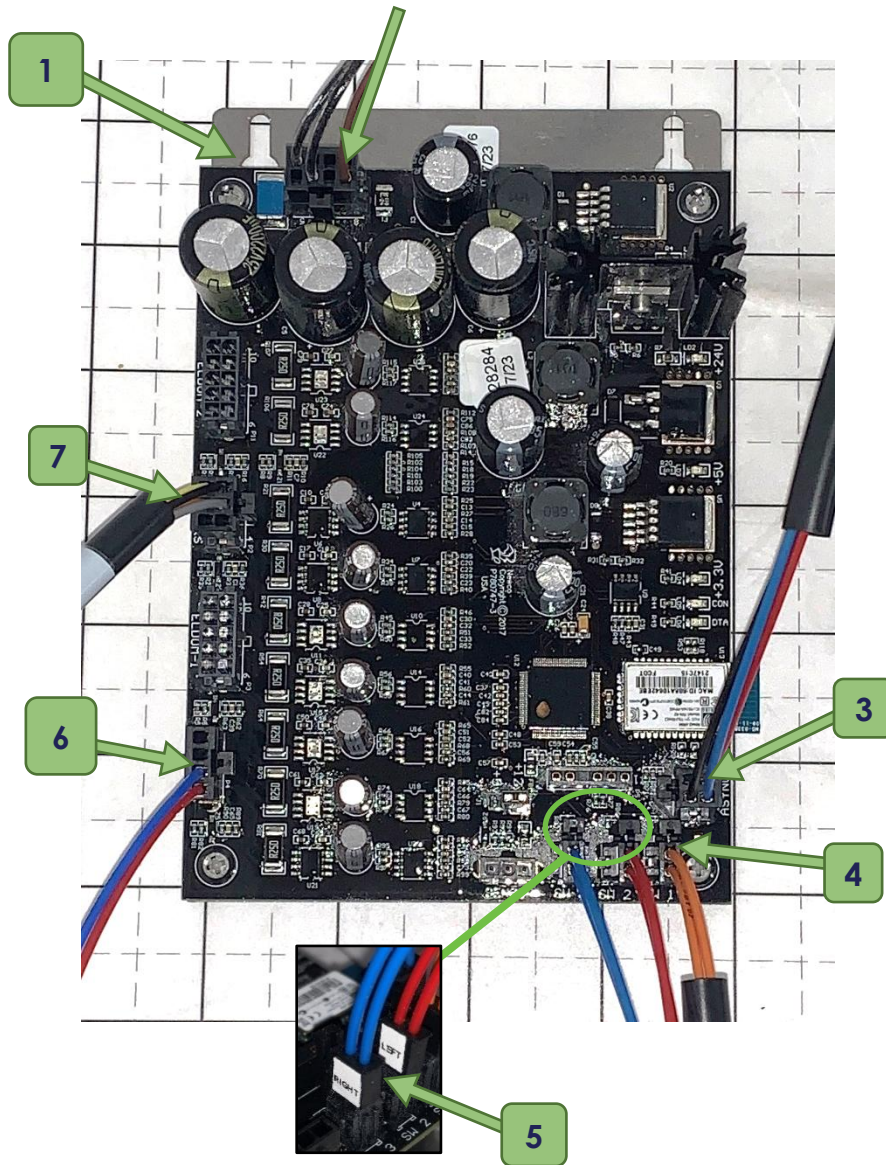
1	100340	OUTLET, CONVENIENCE	1 EA
2	782530	POWER SUPPLY CHARGER, PRETECH TABLET	1 EA
3	782531	USB CORD, PRETECH TABLET	1 EA
4	105115	TRANSFORMER, 120VP, 24VCT 40VA	1 EA

MAIN CONTROL BOARD



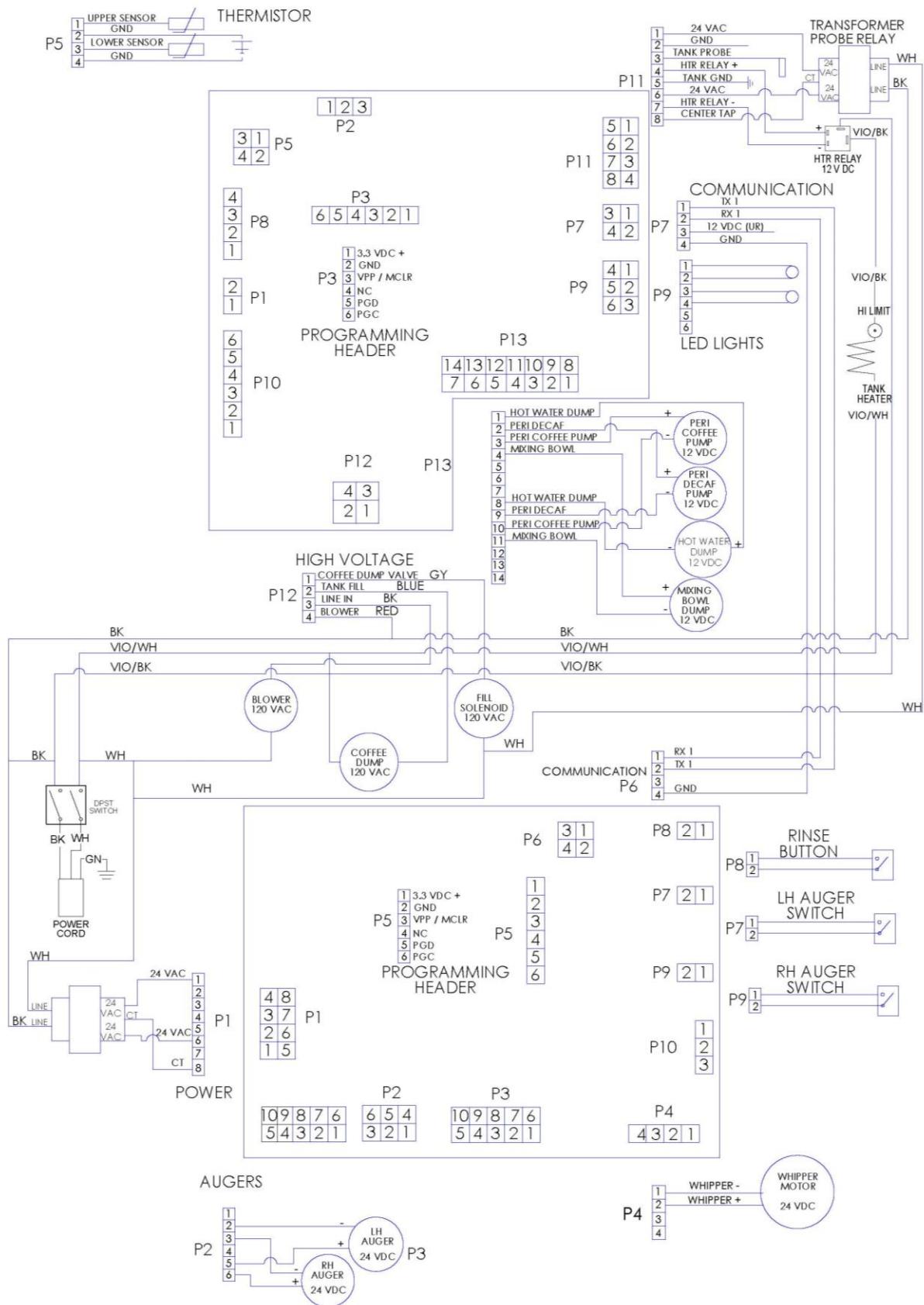
1	128281	CONTROL BOARD ASSEMBLY, BISTRO LARGE CAPACITY	1 EA
2	783060	HARNESS, TRANSFORMER/ TANK, BISTRO TOUCH	1 EA
3	783062	HARNESS, COMMUNICATION, BISTRO TOUCH	1 EA
4	128140	HARNESS & LED, BISTRO TOUCH	1 EA
5	128134	HARNESS, PUMP, BISTRO TOUCH	1 EA
6	128115	HARNESS, LINE BISTRO TOUCH	1 EA
7	103336	FUSE, 125V	1 EA
8	151677	PROBE, TEMPERATURE, DUAL, 7.312, THERM	1 EA

AUXILIARY BOARD



1	128324	AUXILIARY BOARD ASSEMBLY, BISTRO LARGE CAPACITY	1 EA
2	783057	HARNESS, TRANSFORMER #2, BISTRO TOUCH	1 EA
3	783062	HARNESS, COMMUNICATION, BISTRO TOUCH	1 EA
4	123025	HARNESS, RINSE, BISTRO TOUCH	1 EA
5	783054	HARNESS, LEFT AND RIGHT HOPPER SWITCHES	1 EA
6	783055	HARNESS, WHIPPER, BISTRO TOUCH	1 EA
7	128135	HARNESS, AUGER, BISTRO TOUCH	1 EA

WIRING DIAGRAM



MISCELLANEOUS

N/S	900083	CLEANER,EASY CLEAN	1 EA
N/S	780868	LUBRICANT,FOOD GRADE, 0.25oz	1 EA