

# LITTLE JOE PARTS LIST

NEWCO ENTERPRISES INC,  
3650 NEW TOWN BLVD SAINT CHARLES, MO 63301  
1-800-325-7867



# NEWCO CONTACT INFORMATION

## ADDRESS

NEWCO ENTERPRISES INC,  
3650 NEW TOWN BLVD  
SAINT CHARLES, MO 63301

## CUSTOMER SERVICE PHONE

1-800-325-7867

## TECHNICAL SERVICE PHONE

1-800-556-3926

## FAX

1-636-925-0029

## WEBSITE

[newcocooffee.com](http://newcocooffee.com)

## CUSTOMER SERVICE AND SALES EMAIL

[sales@newcocooffee.com](mailto:sales@newcocooffee.com)

## MAINTENANCE INFORMATION

Machine Model \_\_\_\_\_

Serial Number \_\_\_\_\_

Company Information and Phone Number

---

---

---

---

# WARRANTY

*This warranty supersedes all other previous warranties that are currently in manuals. Newco warrants equipment manufactured by it for 1 year parts and labor. Dispensers and Display Tablets - 1 year parts only. Electronic Circuit and Control Boards- 1 year parts and labor.*

These warranty periods run from the date of sale Newco warrants that the equipment manufactured by it will be commercially free of defects in material and workmanship existing at the time of manufacture and appearing within the applicable warranty period. This warranty does not apply to any equipment, component or part that was not manufactured by Newco or that, in Newco's judgment, has been affected by misuse, neglect, alteration, improper installation or operation, relocation or reinstallation, improper maintenance or repair, incorrect voltage applied to the unit at any time, damage or casualty. This warranty does not apply to any equipment failures related to poor water quality, excessive lime and chlorine and non-periodic cleaning and descaling. Warranty is null and void if muriatic or any other form of hydrochloric acid is used for cleaning or deliming. In addition, this warranty does not apply to replacement of items subject to normal use including but not limited to user replaceable parts such as faucet seat cups, sight gauge tubes, washers, o-rings, tubing, seals and gaskets.

This warranty is conditioned on the Buyer 1) giving Newco prompt notice of any claim to be made under this warranty by telephone at (800) 556-3926 or by writing to **3650 New Town Blvd, Saint Charles, MO 63301**; 2) if requested by Newco, shipping the defective equipment prepaid to an authorized Newco service location; and 3) receiving prior authorization from Newco that the defective equipment is under warranty.

THE FOREGOING WARRANTY IS EXCLUSIVE AND IS IN LIEU OF ANY OTHER WARRANTY, WRITTEN OR ORAL, EXPRESS OR IMPLIED, INCLUDING, BUT NOT LIMITED TO, ANY IMPLIED WARRANTY OF EITHER MERCHANTABILITY OR FITNESS FOR A PARTICULAR PURPOSE. The agents, dealers or employees of Newco are not authorized to make modifications to this warranty or to make additional warranties that are binding on Newco. Accordingly, statements by such individuals, whether oral or written, do not constitute warranties and should not be relied upon.

If Newco determines in its sole discretion that the equipment does not conform to the warranty, Newco, at its exclusive option while the equipment is under warranty, shall either 1) provide at no charge replacement parts and/or labor (during the applicable parts and labor warranty periods specified above) to repair the defective components, provided that this repair is done by a Newco Authorized Service Representative; or 2) shall replace the equipment or refund the purchase price for the equipment.

THE BUYER'S REMEDY AGAINST NEWCO FOR THE BREACH OF ANY OBLIGATION ARISING OUT OF THE SALE OF THIS EQUIPMENT, WHETHER DERIVED FROM WARRANTY OR OTHERWISE, SHALL BE LIMITED, AT NEWCO'S SOLE OPTION AS SPECIFIED HEREIN, TO REPAIR, REPLACEMENT OR REFUND.

In no event shall Newco be liable for any other damage or loss, including, but not limited to, lost profits, lost sales, loss of use of equipment, claims of Buyer's customers, cost of capital, cost of down time, cost of substitute equipment, facilities or services, or any other special, incidental or consequential damages.

# TABLE OF CONTENTS

Servicing the Machine -----	5
Draining the Hot Water Tank -----	5
Flavor Ring Instructions -----	6
Machine Parts -----	8
Display Assembly with Panel -----	8
Waste Bin -----	9
Drip Tray -----	10
Drain Tube -----	11
Reservoir -----	12
Brewing Mechanism -----	14
Dispense Area -----	17
Back of the Machine -----	19
Water Inlet -----	20
Tank with Major Components -----	21
3-way Valve Assembly Components -----	23
Right Side -----	24
Control Board Assembly -----	25
Wire Harnesses -----	26
Wiring Diagram -----	25

# SERVICING THE MACHINE

## DRAINING THE HOT WATER TANK



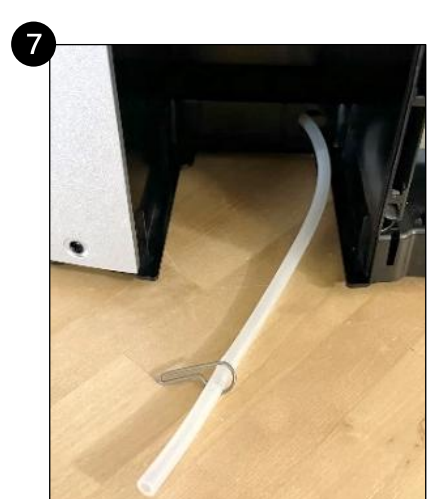
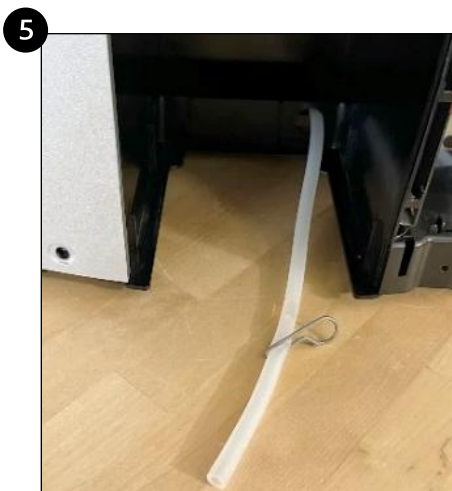
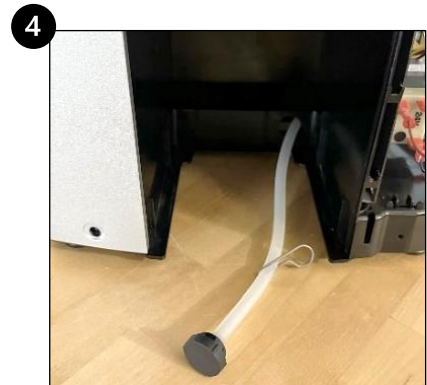
### **WARNING:**

DISCONNECT MACHINE FROM POWER & ALLOW HOT WATER TO COOL COMPLETELY BEFORE ATTEMPTING TO DRAIN WATER TANK!

Perform the following steps to drain the hot water tank.

**Note:** Waste bin is designed to hold the water released by the system once all spent pods have been removed.

1. Disconnect brewer from power & allow hot water tank to cool completely.
2. Remove waste bin once machine has cooled.
3. Locate the drain plug behind the waste bin in the lower right corner of the back wall.
4. Gently pull on the plug & extend the drain tube.
  - a. The tube clamp attached to drain tube may need to be angled to maneuver it through drain plug opening.
5. Remove the drain plug from the end of the drain tube.
6. Direct drain tube into a container or drain. Ensure your hands are away from the end of the tube.
7. Slide the tube clamp to release the water.
8. Once the water has finished draining, slide the clamp back to close off the drain tube.
9. Insert the drain plug back onto the drain tube.
10. Push the drain tube back into the machine & push the drain plug back into its opening.



Direct tube into a container or drain  
**BEFORE** sliding tube clamp!

# SERVICING THE MACHINE

## FLAVOR RING INSTRUCTIONS

### For the Little Joe Spray Head Assembly

See pg. 15 for related components & PNs



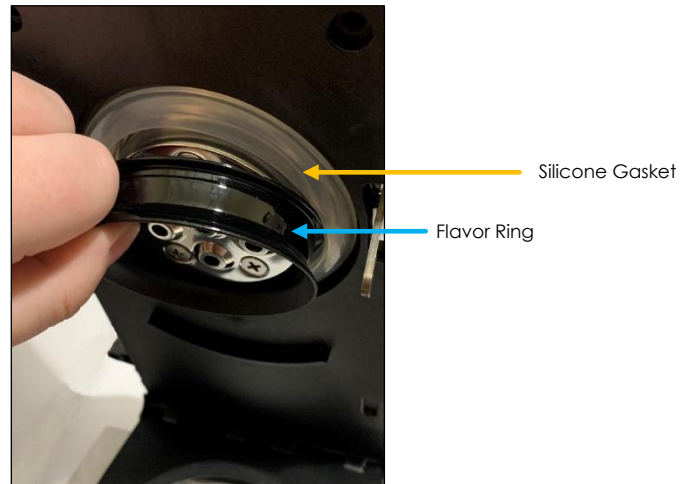
#### **CAUTION:**

Toggle power **OFF** & read all instruction carefully before servicing your machine!

For optimal brewing performance, please keep the flavor ring installed. If there are occurrences of heavier gram weight pods remaining in the upper chamber, then the flavor ring may be removed.

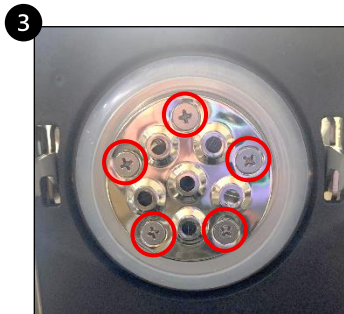
### Removing the Ring

1. Ensure brewer is powered **OFF** & fully cooled.
2. Open brew mech & pull flavor ring out of silicone gasket.
3. Ensure flavor ring is clean & dry before storing.



### Replacing the Ring

1. Ensure brewer is powered **OFF** & fully cooled.
2. Open the brew mech.
3. Use a Phillips Head screwdriver to remove the 5 screws holding the spray head assembly in place.
4. Gently pull on the silicone gasket to remove the spray head assembly from brew mech.
5. Remove the silicone gasket from the spray head.





# SERVICING THE MACHINE

## FLAVOR RING INSTRUCTIONS



### CAUTION:

Toggle power **OFF** & read all instruction carefully before servicing your machine!

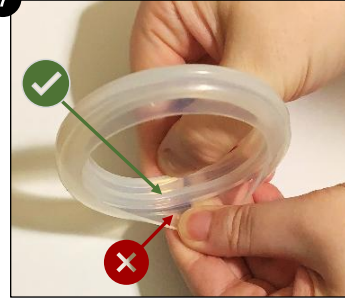
### Replacing the Ring

6. Align the spray head & the flavor ring as shown.
7. Insert the flat edges of the spray head & the flavor ring into the groove of the silicone gasket. Ensure the wider end of the flavor ring is on the same side as the wider groove in the silicone gasket.

6



7

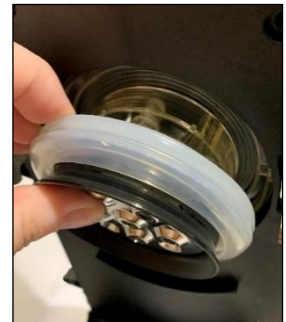
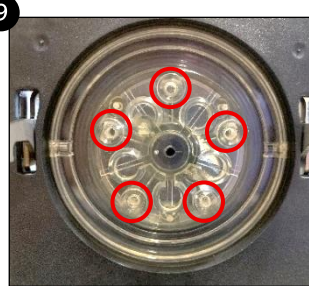


8. Work the silicone gasket around the silver metal spray head and flavor ring until all edges are fully seated in the groove.
9. Identify where the screw holes are on the brewer spray head (*clear plastic, circled*) & align with the screw holes of the metal spray head assembly with the flavor ring facing **OUTWARDS**.

8



9



10. Push the spray head assembly into the brew mech & hold.
11. Use a Phillips Head screwdriver to re-install the previously removed 5 screws.
12. Open & close the brew mech several times, checking to make sure the mech latches properly.



### WARNING:

If the brew mech does not close properly, remove the spray head & start again.  
Failure to fully tighten screws may cause leakages & impact brewer performance!

11



12



# MACHINE PARTS

## DISPLAY ASSEMBLY WITH PANEL

### ! IMPORTANT COMPONENT INFORMATION

Brewers with Serial Number SP00006000 & HIGHER were manufactured with an updated Control Board Assembly & an updated Display Panel Assembly.

The updated Display Panel Assembly is NOT compatible with the previous model of Control Board Assembly (Used in Brewers with Serial Numbers PRIOR TO SP00006000)

See chart below to determine which Display Panel Assembly is compatible with your model brewer.



**If Brewer Serial Number is  
SP00005999 or LOWER:**

**COMPLETE ASSEMBLY  
WITH PANEL**  
English Only  
PN 153237-SV

**COMPLETE ASSEMBLY  
WITH PANEL**  
Multi-Language  
PN 1533274-SV

**If Brewer Serial Number is  
SP00006000 or HIGHER:**

**COMPLETE ASSEMBLY  
WITH PANEL**  
English Only  
PN 153330-SV

**COMPLETE ASSEMBLY  
WITH PANEL**  
Multi-Language  
PN 153328-SV

Serial Number	Control Board in Brewer	Compatible Display Panel Assembly (English Only)	Compatible Display Panel Assembly (Multi Language)
SP00005999 or LOWER	PN: 152906	PN: 153237-SV	PN: 1533274-SV
SP00006000 or HIGHER	PN: 153332	PN: 153330-SV	PN: 153328-SV

Brewer Serial Number is listed on the Serial Tag, located on the back panel of machine.



# MACHINE PARTS

## WASTE BIN

**Waste Bin Assembly**  
PN 152948

**Pass-Through Waste Bin Assembly**  
PN: 153256



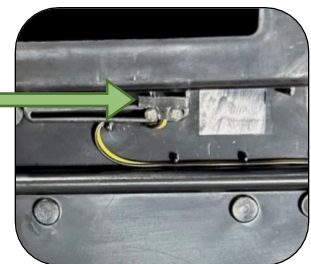
**Magnet**  
PN: 121301  
**Magnet Cover**  
PN: 782160



**Drop Down Cup Holder**  
PN: 152931



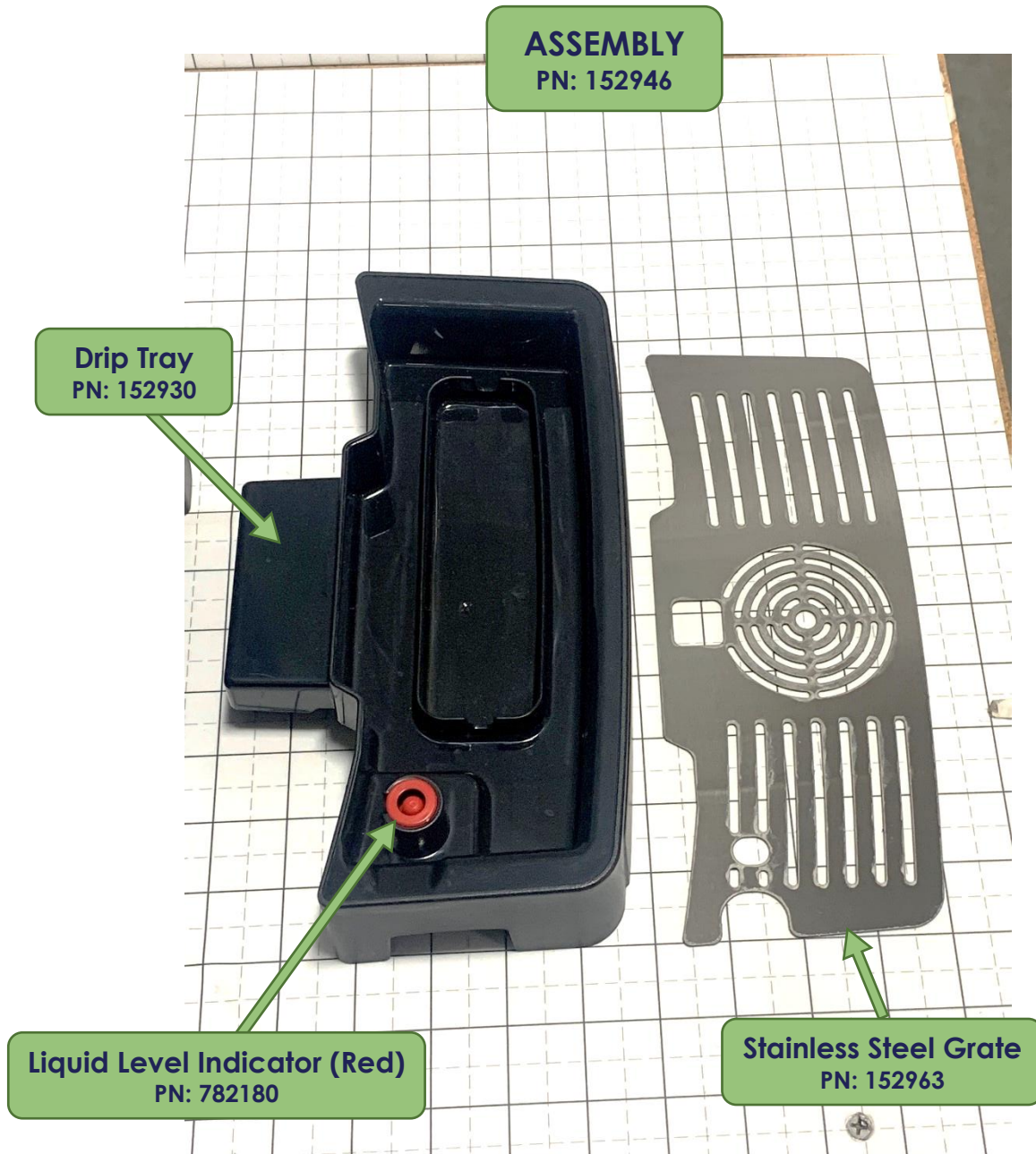
**Waste Bin Sensor**  
PN: 152993



Sensor is located below small cover plate on bottom of brewer.

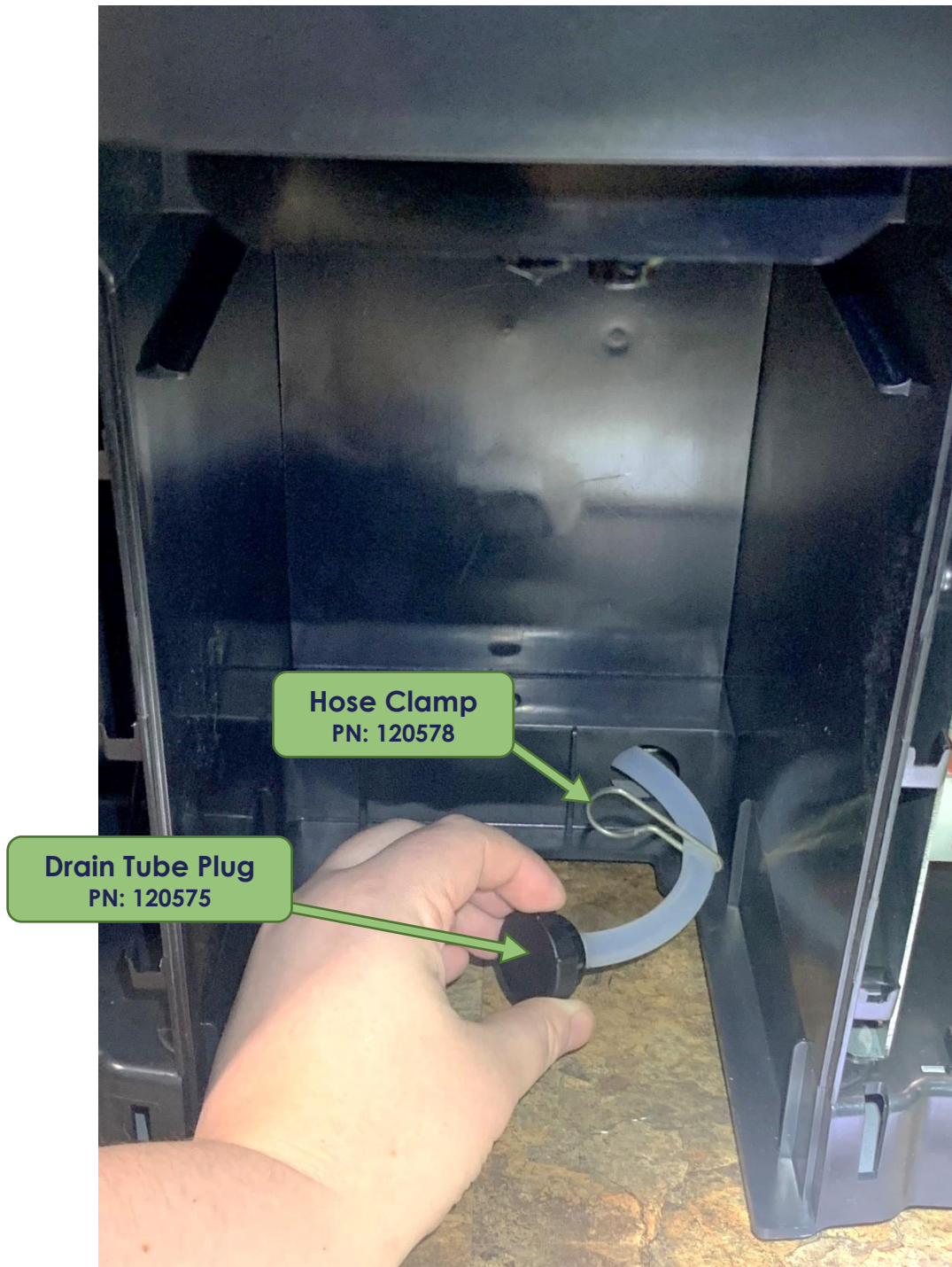
# MACHINE PARTS

## DRIP TRAY



## MACHINE PARTS

### DRAIN TUBE





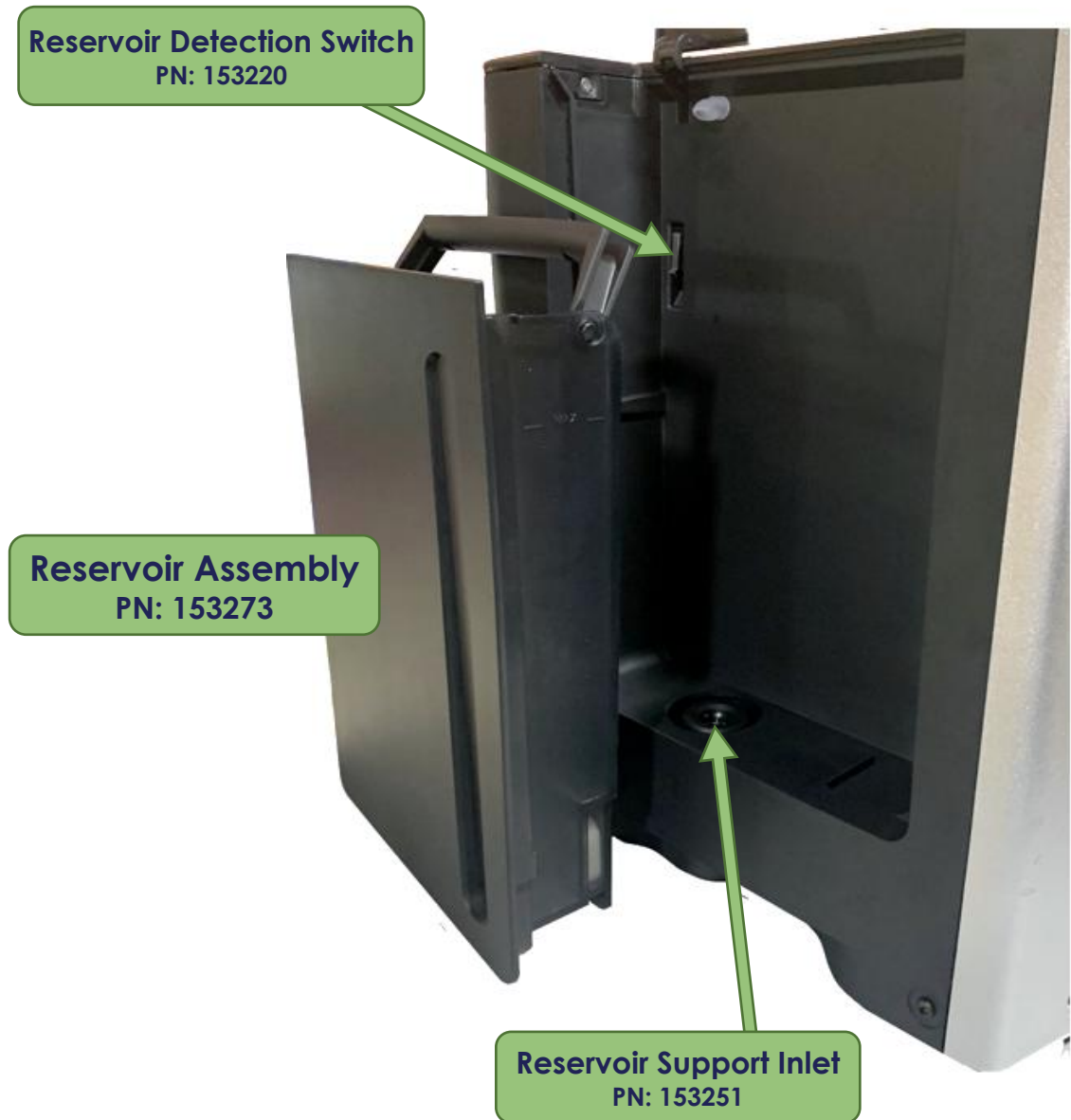
# MACHINE PARTS

## RESERVOIR

### ! IMPORTANT COMPONENT INFORMATION

Brewers manufactured up to Serial Number SP00004069 were built with Reservoir Assembly PN:153273 & Reservoir Detection Switch PN:153220.

See note at bottom of page for more information.



#### Note:

**Reservoir Assembly PN:153273** (shown above) is only compatible with **Reservoir Detection Switch PN:153220**.

**Reservoir Assembly PN:153273** is **NOT** compatible with the Reservoir Detection Switch shown on the following page.

If your brewer uses the black plastic reservoir **PN:153273**, ensure that you request **PN:153220** when ordering a replacement **Reservoir Detection Switch**.

# MACHINE PARTS

## RESERVOIR

### ! IMPORTANT COMPONENT INFORMATION

Brewers manufactured AFTER Serial Number SP00004069 were built with Reservoir Assembly PN:153324 & Reservoir Detection Switch PN:153404.

See note at bottom of page for more information.



#### Note:

Reservoir Assembly PN:153324 (shown above) is only compatible with Reservoir Detection Switch PN:153404.

Reservoir Assembly PN:153324 is NOT compatible with the Reservoir Detection Switch shown on the following page.

If your brewer uses the clear plastic reservoir PN:153324, ensure that you request PN:153324 when ordering a replacement Reservoir Detection Switch.



# MACHINE PARTS

## BREWING MECHANISM

### Complete Spray Head Assembly PN 153020

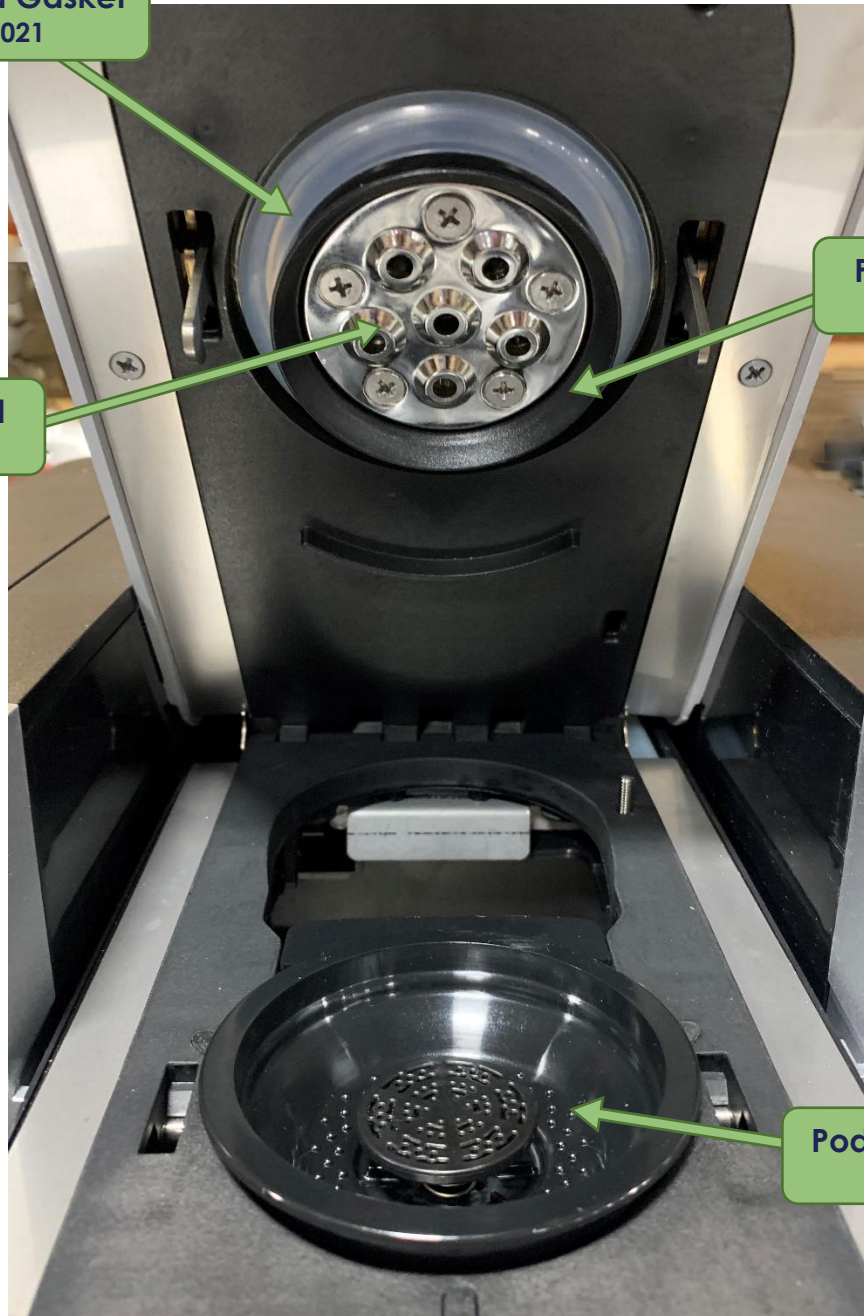
Comes with Gasket, Spray Head & Screws

Spray Head Gasket  
PN: 153021

Spray Head  
PN: 153022

Flavor Ring  
PN: 153222

Pod Holder Cup  
PN: 152757



## MACHINE PARTS

### BREWING MECHANISM

#### Limit Switch w/Harness & Bracket



The Limit Switch Bracket is installed onto the Brew Mech Upper.



Limit Switch trip point

#### Limit Switch Bracket PN: 152979

Screw (2x)  
PN: 103969  
Nut (2x)  
PN: 103970

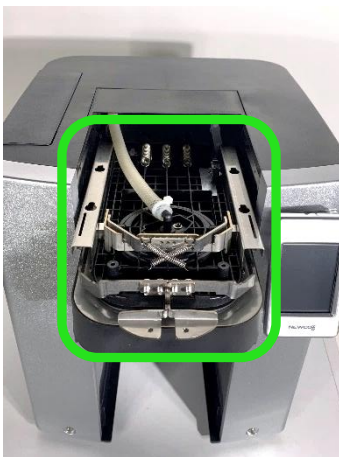
#### Limit Switch with Harness PN: 152992

# MACHINE PARTS

## BREWING MECHANISM

**Pod Flipper Spring**  
PN: 152902

Pod Flipper Spring is installed onto brewer base **BELOW** the Brew Mech.



Brew Mech must be removed from brewer to access Flipper Lever.



**Brew Mech  
Flipper Lever**  
PN: 152755

**Pivot Pin for Brew  
Mech Flipper Lever**  
PN: 152758



## MACHINE PARTS DISPENSE AREA



**Product Nozzle**  
PN: 767254



**Funnel Assembly w /O-Ring**  
PN: 780592

**Funnel Retainer**  
PN: 780041

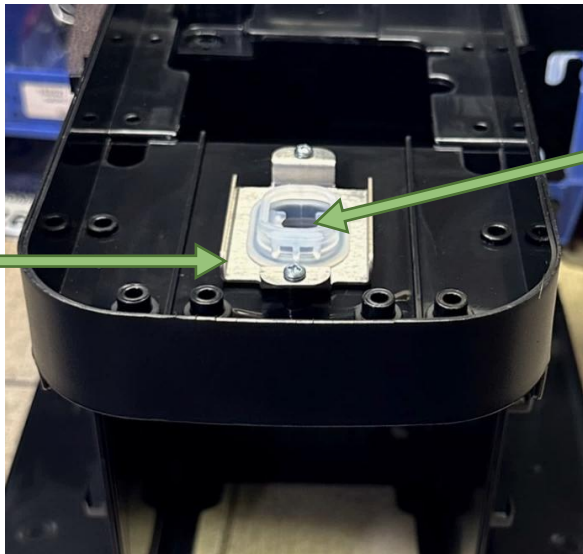
## MACHINE PARTS DISPENSE AREA

**Barrier Plate**  
PN: 153226



Barrier Plate is located **UNDER** the Funnel Assembly.

**Splashguard Retainer**  
PN: 152969



**Splashguard**  
PN: 152767

Splashguard & Splashguard Retainer are installed **UNDER** the Brew Mech.



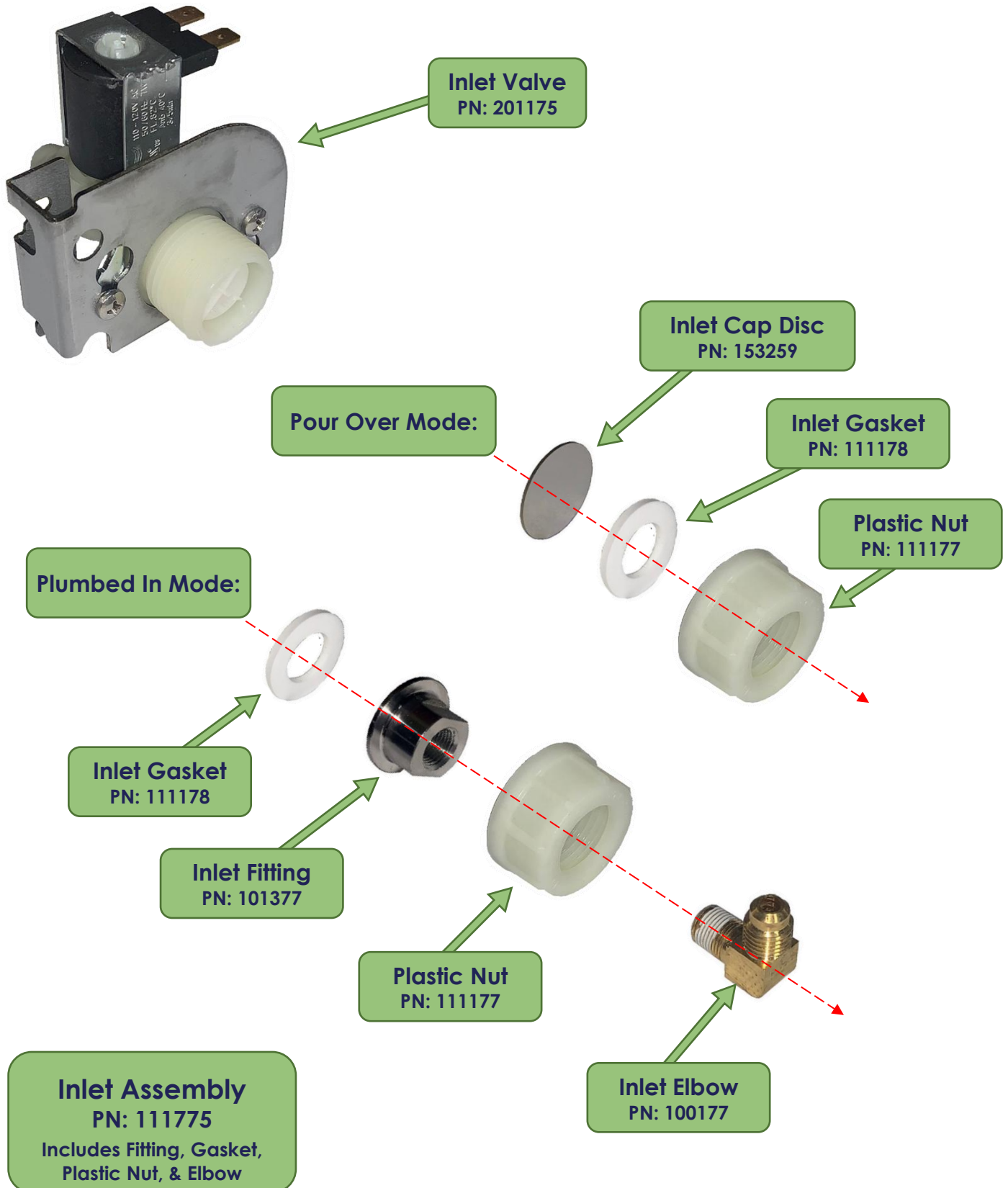
# MACHINE PARTS

## BACK OF THE MACHINE



# MACHINE PARTS

## WATER INLET



# MACHINE PARTS

## TANK WITH MAJOR COMPONENTS

**1700W Tank (US)**  
PN 153266

**1400W Tank (Can)**  
PN 153267

**3 Way Valve w/ Two  
Straight Barb Fittings  
(Coffee Valve)**  
PN 153312

See page 23 for more details.

**Water Pump**  
PN: 153024

**3 Way Valve w/ One  
Straight Barb Fitting &  
One 90° Barb Fitting  
(Hot Water Valve)**  
PN: 153313

See page 23 for more details.

**Flowmeter Assembly**  
PN: 152952

# MACHINE PARTS

## TANK WITH MAJOR COMPONENTS

**1700W Tank (US)**  
PN: 153408

**1400W Tank (Can)**  
PN: 153407

**3 Way Valve w/ One  
Straight Barb Fitting &  
One 90° Barb Fitting  
(Hot Water Valve)**

PN: 153313

See page 23 for more details.

**3 Way Valve w/ Two  
Straight Barb Fittings  
(Coffee Valve)**

PN 153312

See page 23 for more details.

**Water Pump**

PN: 153024

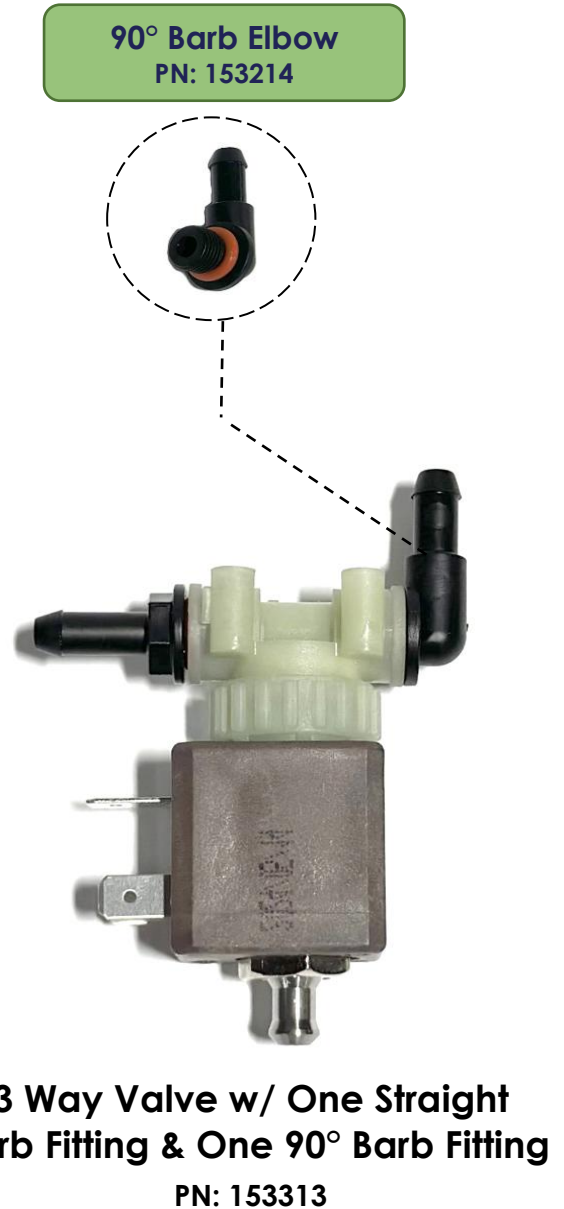
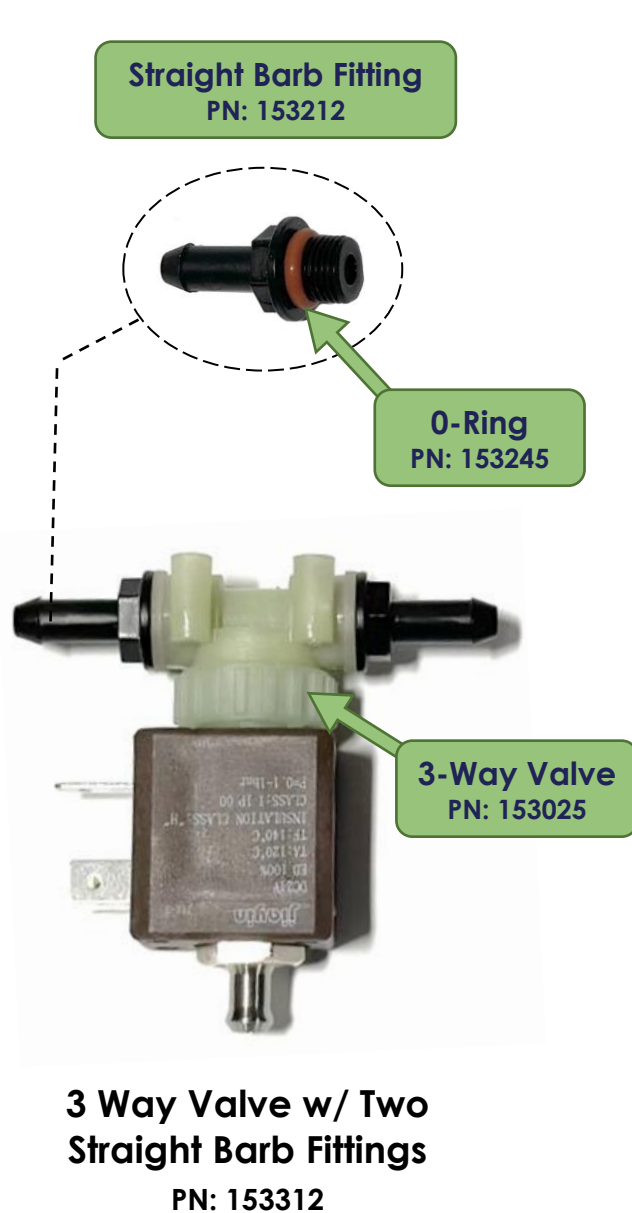
**Flowmeter Assembly**

PN: 152952



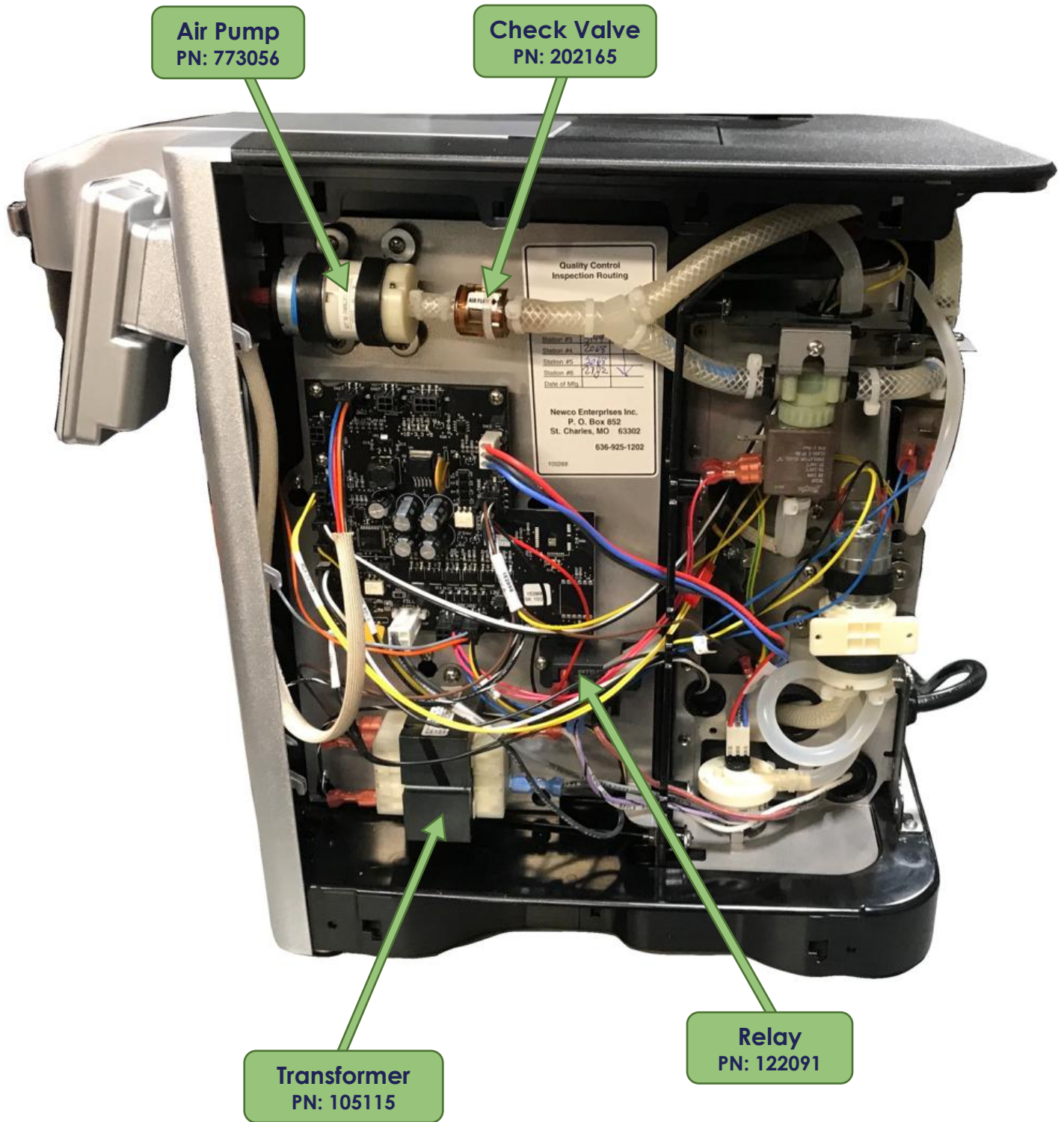
# MACHINE PARTS

## 3-WAY VALVE ASSEMBLY COMPONENTS





# MACHINE PARTS RIGHT SIDE



# MACHINE PARTS

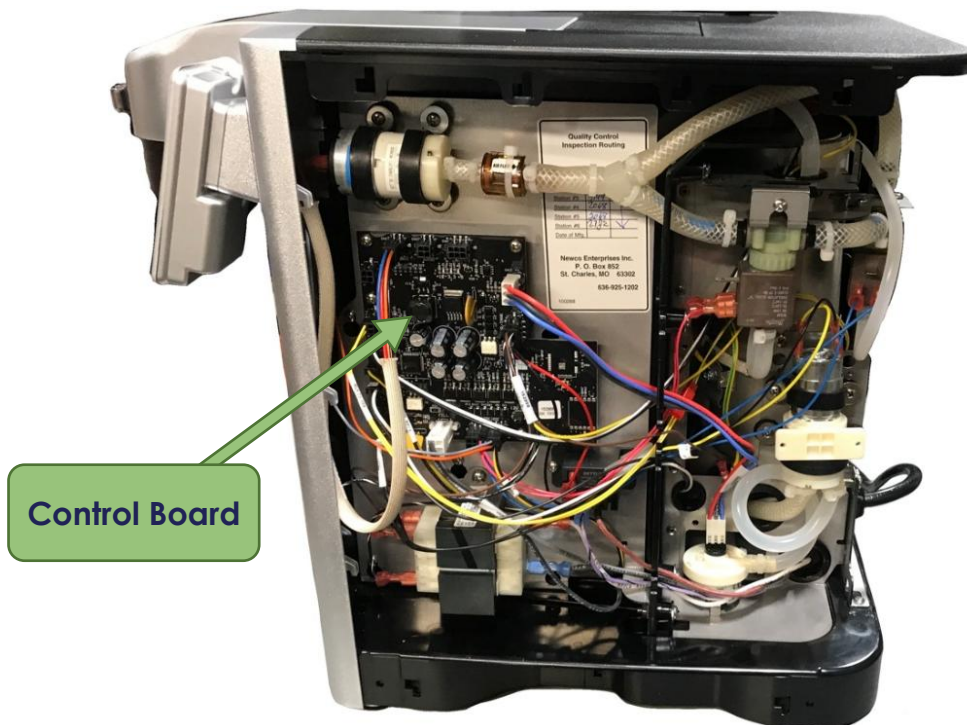
## CONTROL BOARD ASSEMBLY

### ! IMPORTANT COMPONENT INFORMATION

Brewers with Serial Number SP00006000 & HIGHER were manufactured with an updated Control Board Assembly & an updated Display Panel Assembly.

The updated Display Panel Assembly is NOT compatible with the previous model of Control Board Assembly (Used in Brewers with Serial Numbers PRIOR TO SP00006000)

See chart below to determine which Control Board Assembly is compatible with your model brewer.



If Brewer Serial Number is  
SP00005999 or LOWER:

**Control Board**  
PN: 152906

If Brewer Serial Number is  
SP00006000 or HIGHER:

**Control Board**  
PN: 153332

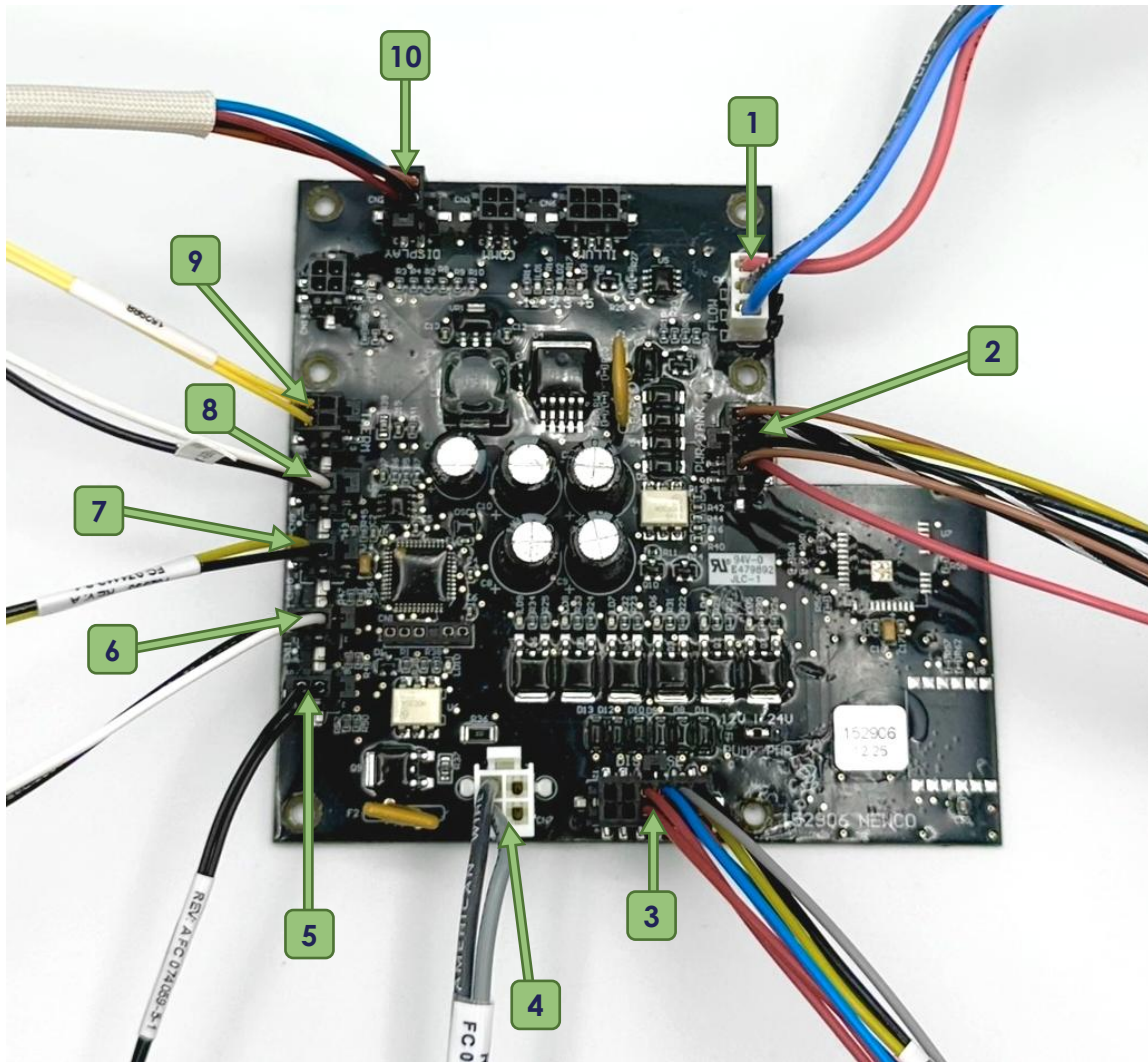
Serial Number	Control Board in Brewer	Compatible Display Panel Assembly (English Only)	Compatible Display Panel Assembly (Multi Language)
SP00005999 or LOWER	PN: 152906	PN: 153237-SV	PN: 1533274-SV
SP00006000 or HIGHER	PN: 153332	PN: 153330-SV	PN: 153328-SV

Brewer Serial Number is listed on the Serial Tag, located on the back panel of machine.

# MACHINE PARTS

## CONTROL BOARD ASSEMBLY

### Wire Harnesses



Wire Harnesses			
1	152990	Flow Meter Harness	1 EA
2	152998	Relay/Transformer Harness	1 EA
3	152995	Air/ Solenoid Harness	1 EA
4	152997	Inlet Valve / PCB Harness	1 EA
5	152994	Prox/Microswitch Harness	1 EA
6	See pg. 12-13	Reservoir Detection Switch	1 EA
7	152993	Magnet Sensor Harness (Waste Bin Sensor)	1 EA
8	152992	Limit Switch Harness (Brew Mech)	1 EA
9	152988	Thermistor Harness	1 EA
10	See pg. 8	Display Panel Assembly	1 EA



The diagram illustrates the electrical connections for a coffee machine. The central component is the **MAIN PCB**, which interfaces with a **DISPLAY BOARD** (featuring a USB port and P6/P5 headers) and various sensors and actuators. Power is supplied by a **TRANSFORMER** (12V CT, 24V, 24V) connected to the **120 V LINE** and **120 V GROUND**. The **MAIN PCB** controls the **RELAY** (NC, NO, COM, COIL), **THERMISTOR ELEMENT**, **HI LIMIT**, **TCO**, **TANK SIGNAL IN**, **PROBE**, **INLET VALVE**, **ON/OFF SWITCH**, **WATER PUMP**, **AIR PUMP**, **HOT WATER VALVE**, **COFFEE VALVE**, **FLOW METER**, **RESERVOIR DETECTION SWITCH**, **WASTE BIN**, **BREW RESET**, and **RESERVOIR LEVEL**. The diagram also shows the wiring for the **120 V LINE** and **120 V GROUND**.