

# BISTRO TOUCH LARGE CAPACITY

NEWCO ENTERPRISES INC,  
3650 NEW TOWN BLVD SAINT CHARLES, MO 63301  
1-800-325-7867



For brewer PN 128280

Shown with side car accessory, 128269-BPC  
To order Brewer and Side Car together, order PN 128302

## NEWCO CONTACT INFORMATION

### ADDRESS

NEWCO ENTERPRISES INC,  
3650 NEW TOWN BLVD  
SAINT CHARLES, MO 63301

### CUSTOMER SERVICE PHONE

1-800-325-7867

### TECHNICAL SERVICE PHONE

1-800-556-3926

### FAX

1-636-925-0029

### WEBSITE

[newcocooffee.com](http://newcocooffee.com)

### CUSTOMER SERVICE AND SALES EMAIL

[sales@newcocooffee.com](mailto:sales@newcocooffee.com)

## MAINTENANCE INFORMATION

Machine Model \_\_\_\_\_

Serial Number \_\_\_\_\_

Company Information and Phone Number

---

---

---

---

# TABLE OF CONTENTS

Warranty -----	4
Servicing Your Machine -----	5
Draining the Hot Water Tank -----	5
Whipper Maintenance Instructions -----	6
Replacing the Pump Heads -----	11
Side Car Accessory Product Installation -----	13
Machine Parts -----	14
Exterior -----	14
Side Car Accessory -----	15
Back Panel -----	16
Inlet Area -----	18
Door -----	19
Cabinet -----	21
Hoppers -----	23
Whipper -----	24
Fan Motor -----	25
Pumps -----	26
Tank Assembly -----	28
Tank Lid Assembly -----	29
Overflow Tube -----	30
Motors & Electrical Components -----	31
Main Control Board -----	34
Auxiliary Board -----	35
Wiring Diagram -----	36
Miscellaneous -----	37

## WARRANTY

*This warranty supersedes all other previous warranties that are currently in manuals. Newco warrants equipment manufactured by it for 1-year parts and labor. Accessories, Dispensers, and Display Tablets - 1 Year parts only. Electronic Circuit and Control Boards- 3 years parts, 1 year labor. Equipment manufactured by others and distributed by Newco- please see original equipment manufacturers warranty, Newco will follow.*

These warranty periods run from the date of sale Newco warrants that the equipment manufactured by it will be commercially free of defects in material and workmanship existing at the time of manufacture and appearing within the applicable warranty period. This warranty does not apply to any equipment, component or part that was not manufactured by Newco or that, in Newco's judgment, has been affected by misuse, neglect, alteration, improper installation or operation, relocation or reinstallation, improper maintenance or repair, incorrect voltage applied to the unit at any time, damage or casualty. This warranty does not apply to any equipment failures related to poor water quality, excessive lime and chlorine and non-periodic cleaning and descaling. Warranty is null and void if muriatic or any other form of hydrochloric acid is used for cleaning or deliming. In addition, this warranty does not apply to replacement of items subject to normal use including but not limited to user replaceable parts such as faucet seat cups, sight gauge tubes, washers, o-rings, tubing, seals and gaskets.

This warranty is conditioned on the Buyer 1) giving Newco prompt notice of any claim to be made under this warranty by telephone at (800) 556-3926 or by writing to **3650 New Town Blvd, Saint Charles, MO 63301**; 2) if requested by Newco, shipping the defective equipment prepaid to an authorized Newco service location; and 3) receiving prior authorization from Newco that the defective equipment is under warranty.

THE FOREGOING WARRANTY IS EXCLUSIVE AND IS IN LIEU OF ANY OTHER WARRANTY, WRITTEN OR ORAL, EXPRESS OR IMPLIED, INCLUDING, BUT NOT LIMITED TO, ANY IMPLIED WARRANTY OF EITHER MERCHANTABILITY OR FITNESS FOR A PARTICULAR PURPOSE. The agents, dealers or employees of Newco are not authorized to make modifications to this warranty or to make additional warranties that are binding on Newco. Accordingly, statements by such individuals, whether oral or written, do not constitute warranties and should not be relied upon.

If Newco determines in its sole discretion that the equipment does not conform to the warranty, Newco, at its exclusive option while the equipment is under warranty, shall either 1) provide at no charge replacement parts and/or labor (during the applicable parts and labor warranty periods specified above) to repair the defective components, provided that this repair is done by a Newco Authorized Service Representative; or 2) shall replace the equipment or refund the purchase price for the equipment.

THE BUYER'S REMEDY AGAINST NEWCO FOR THE BREACH OF ANY OBLIGATION ARISING OUT OF THE SALE OF THIS EQUIPMENT, WHETHER DERIVED FROM WARRANTY OR OTHERWISE, SHALL BE LIMITED, AT NEWCO'S SOLE OPTION AS SPECIFIED HEREIN, TO REPAIR, REPLACEMENT OR REFUND.

In no event shall Newco be liable for any other damage or loss, including, but not limited to, lost profits, lost sales, loss of use of equipment, claims of Buyer's customers, cost of capital, cost of down time, cost of substitute equipment, facilities or services, or any other special, incidental or consequential damages.

**WARNING:** *Read and follow installation instructions before plugging or wiring in machine to electrical circuit. Warranty will be void if machine is connected to any voltage other than that specified on the serial tag. Machine must be plugged into a grounded outlet.*

# SERVICING YOUR MACHINE

All Servicing and Repairs are to be done by an authorized Service Technician. Before servicing, machine power must be disconnected from power and hot water tank must be drained.

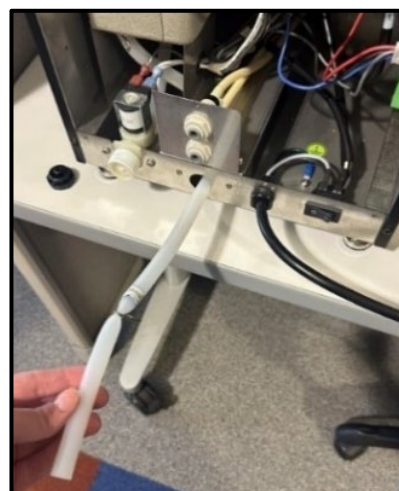
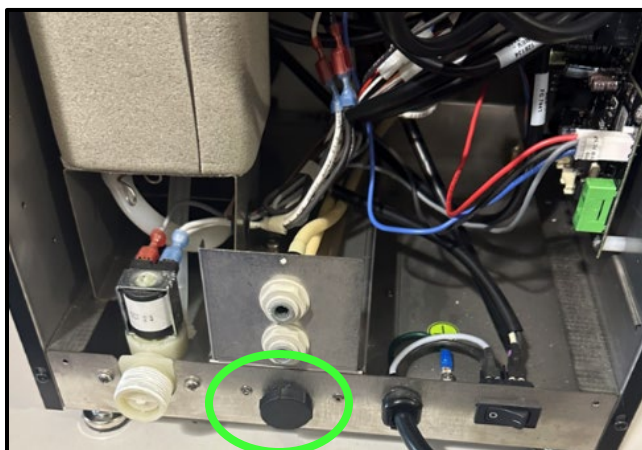
## DRAINING THE HOT WATER TANK



### **Caution:**

*Turn machine off and allow it to cool completely before draining.  
Always use caution when working with hot water.*

1. Once the brewer has cooled, locate the drain plug on the back panel next to the water inlet valve assembly.
2. Fully extend the drain tube by gently pulling the plug and tube assembly outward.
3. Firmly pull the drain plug from the end of the drain tube to remove.
4. Ensure your hands are away from the end of the tube and aim it into a container or drain.
5. Slide the tube clamp to release the water.
6. Once the water has finished draining, slide the clamp back to close off the drain tube.
7. Insert the drain plug onto the end of the drain tube.





# WHIPPER MAINTENANCE INSTRUCTIONS

## For Bistro Touch Large Capacity



**WARNING:** Unplug machine power and read through all instructions carefully before servicing your machine.



**CAUTION:** Before beginning any servicing on the brewer, ensure power is turned off and disconnected. Once brewer is cool, see page 5 for draining the hot water tank. After hot water tank has been drained, servicing may begin.

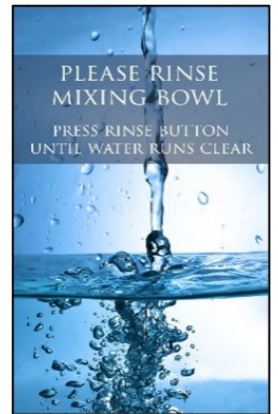
## Daily Cleaning

A rinse of the whipper should be performed multiple times a day.

Additionally, whenever the hoppers of the machine are put back into place after removal, the machine display will prompt a rinse cycle to be run.

## Rinse Cycle Procedure

1. Open the door to the brewer and place a cup under the dispense nozzle.
2. Press the RINSE button located to the side of the whipper.
3. Hold the RINSE button until the water dispensed from the nozzle runs clear.
4. Discard the water dispensed during the rinse cycle.



## Whipper Maintenance

Before beginning the physical maintenance of the whipper, it is important to check the status of the whipper seal cycle count in the Machine Programming menu.

The whipper seal needs to be replaced every **5000 cycles**.

## To Enter Programming

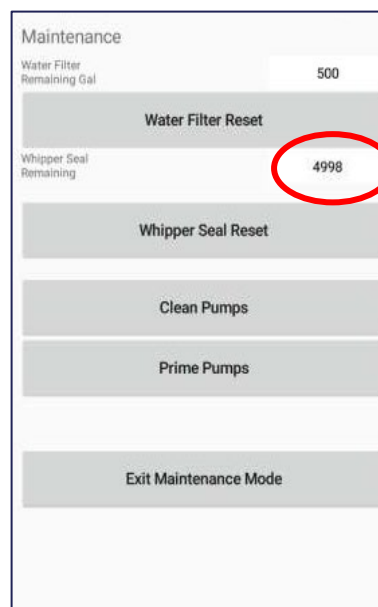
Tap where circled on the images below 3 times to enter the Programming Menu.



## To Enter Programming (continued)



Select "Maintenance"



**CAUTION:** Do not press "Whipper Seal Reset" unless you are replacing the Whipper Seal (PN 781566)

**NOTE:** You must press "Exit Maintenance Mode" then "Exit Programming" before turning off machine power.

## To Remove the Whipper Parts from the Machine

1. Run a rinse cycle to remove any powder from the whipper bowl.
2. Turn machine power off and unplug power cord from wall outlet.
3. Turn hopper elbows upwards.
4. Disconnect dispense nozzle from whipper, and remove the whipper cap.
5. While holding onto the whipper bowl, turn the knob of the base counterclockwise from the 6 o'clock position to the 5 o'clock position.
6. Pull whipper bowl away from the machine.

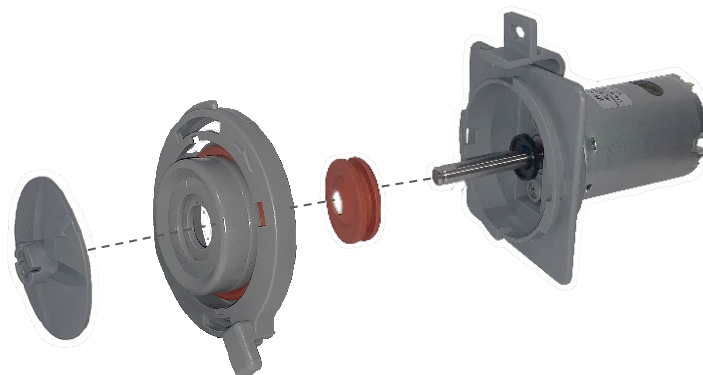


## To Remove the Whipper Parts from the Machine (continued)

- Remove the impeller from the motor shaft.

**Note:** The impeller is set securely in place. You may need a bit of force to remove it.

- Turn the knob on the base counterclockwise from the 5 o'clock position to the 4 o'clock position to unlock it from the motor. You may need to wiggle the base to remove it from the motor shaft.
- Push the whipper seal out of the whipper base.



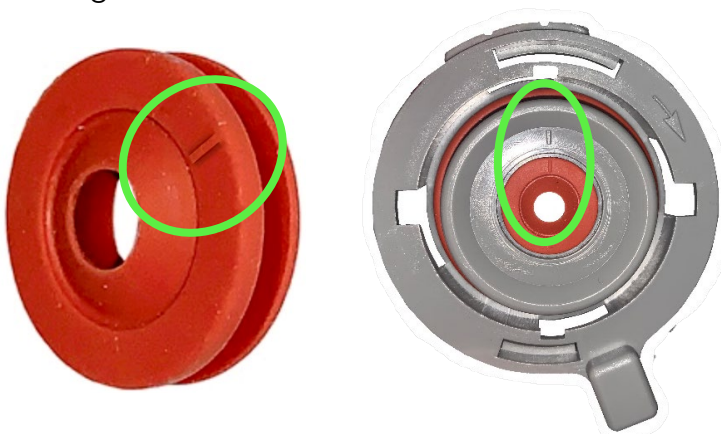
## Cleaning the Whipper Assembly

Wash all whipper parts with warm soapy water & thoroughly rinse. Wipe down the motor shaft with warm soapy water to remove all old lubrication. Ensure all components are completely dry before reassembly.

## Reinstalling the Whipper Assembly

### STEP ONE: SET THE WHIPPER SEAL INTO THE WHIPPER BASE

- Locate the small, raised line on the whipper seal and the whipper base.
- With the raised indicators aligned, press the conical side of the whipper seal into the back of the whipper base. See images below.



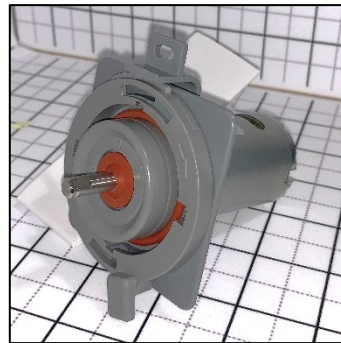
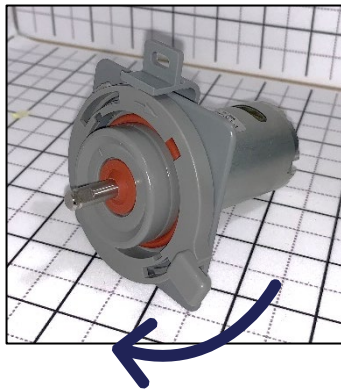
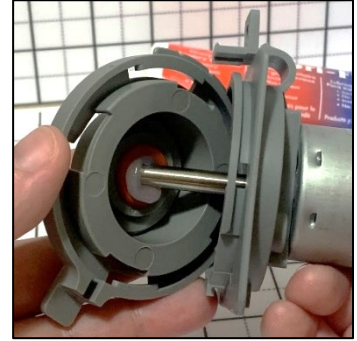
**WARNING:** If the indicator marks are not aligned, whipper seal will not be fully seated in place on the whipper base. Whipper seal will become misshapen, impacting the performance and lifespan of the entire brewer.



## Reinstalling the Whipper Assembly *(continued)*

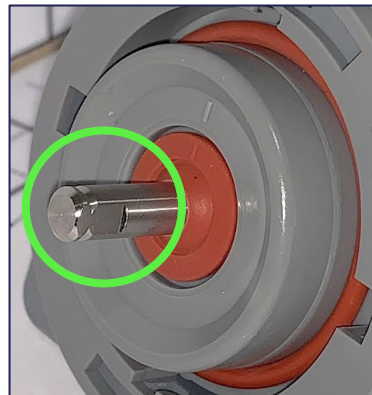
### STEP TWO: LUBRICATE WHIPPER SEAL & INSTALL WHIPPER BASE ONTO WHIPPER MOTOR SHAFT

1. Cover the hole in the whipper seal with one finger.
2. Fill the seal with food grade lubricant (PN 900039)
3. Slide the base onto the motor shaft.
4. Turn the whipper base so that the notch is in the 5 o'clock position.



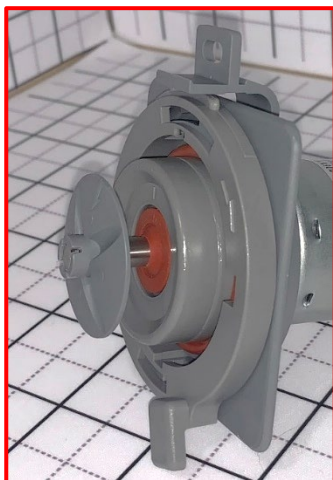
### STEP THREE: INSTALL THE IMPELLER ONTO THE MOTOR SHAFT

1. Locate the arrow on the impeller, and the flat section on the motor shaft.
2. With the front of the impeller (as shown below), facing away from the motor, align the arrow indicator with the flat section of the motor shaft.

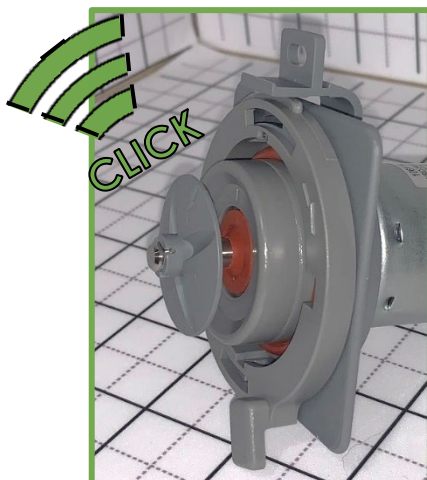


**STEP THREE: INSTALL THE IMPELLER ONTO THE MOTOR SHAFT** *(continued)*

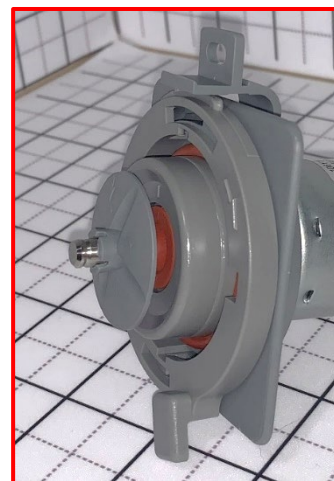
- Slide the impeller onto the motor shaft. An audible click will be heard when the impeller is correctly set into place



Not far enough



Proper placement



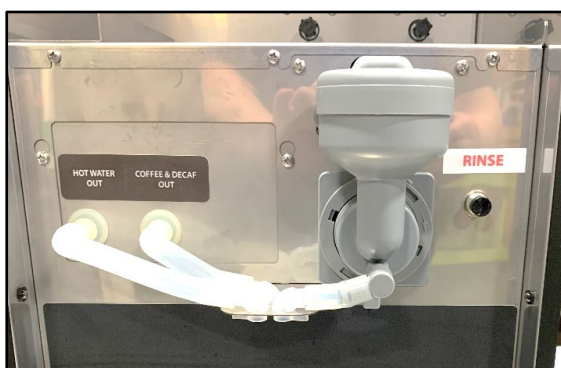
Too far

**STEP FOUR: INSTALL THE WHIPPER BOWL ONTO THE WHIPPER ASSEMBLY**

- Place whipper bowl into the groove of the whipper base.
- Turn the knob of the whipper base clockwise from the 5 o'clock position to the 6 o'clock position.

**STEP FIVE: REPLACE CAP & NOZZLE ONTO THE WHIPPER BOWL**

- Attach cap & nozzle to the whipper bowl.
- Connect to appropriate parts in the brewer.





# REPLACING THE PUMP HEADS

## For Bistro Touch Large Capacity

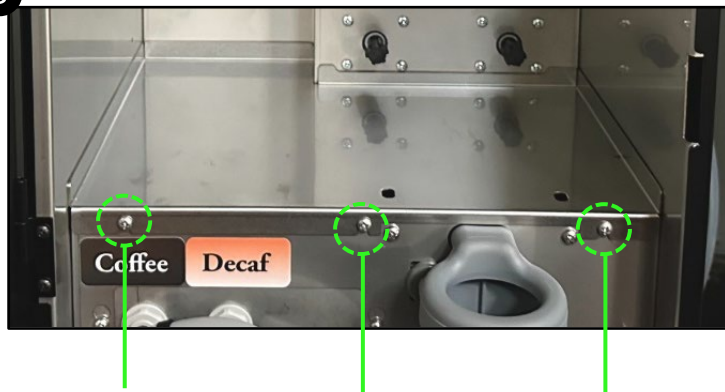
### ACCESSING THE PUMP HEADS

1. Disconnect BIB liquid concentrate. Remove liquid product from sidecar or cabinet.
2. Rotate hopper elbows upward and remove product hoppers from cabinet.
3. Use a Phillips head screwdriver to loosen the three screws holding the product shelf in place. Remove shelf and set aside.

1 & 2



3



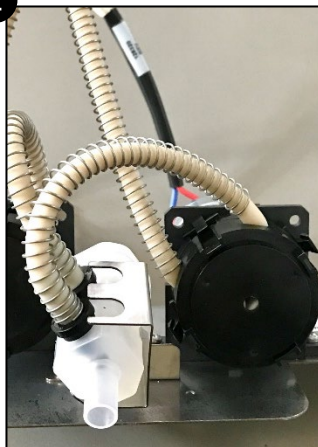
### REMOVING THE PUMP HEADS

1. Remove the wireform clip from two-product mixing chamber.
2. Rotate the two-product mixing chamber so that pump check valves are unobstructed from mixing chamber bracket.
3. Pull out pump tube from two-product mixing chamber ensuring that the check valve comes out fully. Disconnect other tube from John Guest fitting inside of brewer cabinet.
4. Pinch left and right side clasps inward on the pump head and pull straight back to remove.

1



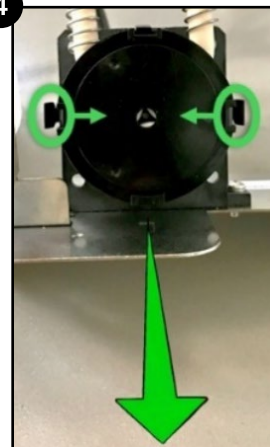
2



3



4

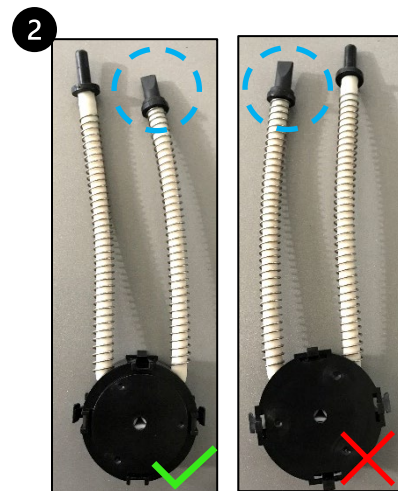
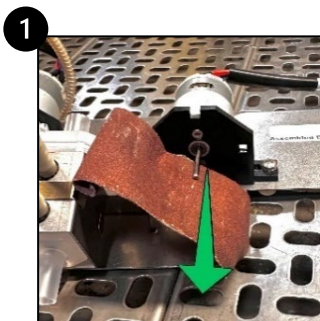


# REPLACING THE PUMP HEADS

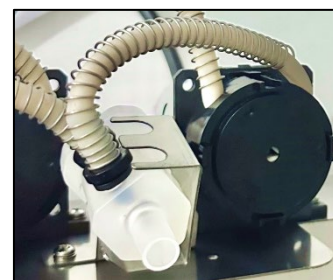
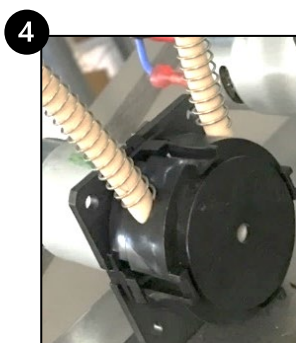
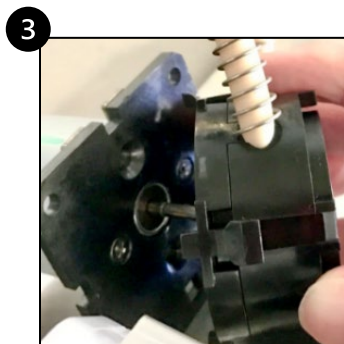
## For Bistro Touch Large Capacity

### REPLACING THE PUMP HEADS

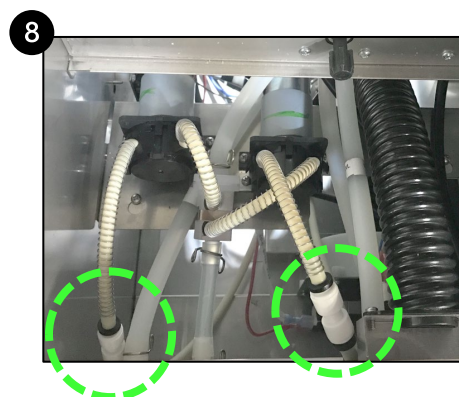
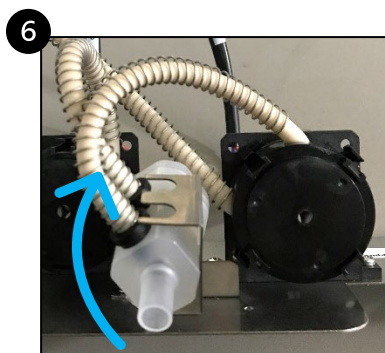
1. Prep the motor shaft by buffing **directly outward** with emery cloth.
2. Position the new pump head assembly so that the tube with the **duck bill tip** is on the **RIGHT** side.



3. Align the motor shaft with the pump head assembly hole. Hold assembly at a 45-degree angle and apply pressure until it slides onto the shaft.
4. Press the new pump head assembly onto the shaft until you hear an audible click.  
(this click indicates that the Left / Right clasps are fully latched into place.)
5. Detach duck bill check valve from new pump assembly. Insert check valve into mixing chamber, then insert RIGHT side tube stem into check valve.

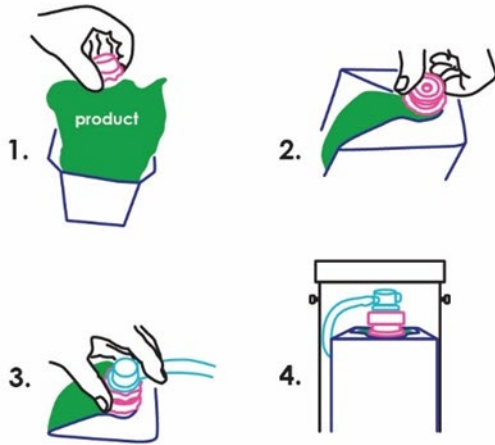


6. Rotate two-product mixing chamber back into position, ensuring that check valves and plastic stems are positioned UNDER mixing chamber bracket.
7. Replace the wireform clip on to the two-product mixing chamber.
8. Insert the other tube from the new pump head assembly into the appropriate John Guest fitting.



# SIDE CAR ACCESSORY PRODUCT INSTALLATION

## PRODUCT INSTALLATION



1. Open product box.
2. Remove the plastic insert from the BIB fitment.
3. Using finger and thumb only to prevent over-tightening, thread the BIB connector on to the BIB fitment until seated.
4. Place product in sidecar with BIB facing up. slide into place and replace door.

PN: 128335



# MACHINE PARTS

## EXTERIOR



1	783092-BPC	PANEL, RIGHT SIDE EXTERIOR	1 EA
2	128148	LABEL, PLACE CUP, BISTRO TOUCH	1 EA
3	783078-BPC	PANEL, LEFT SIDE EXTERIOR	1 EA
	<b>122054</b>	<b>DRIP TRAY ASSEMBLY, BISTRO*</b>	<b>1 EA</b>
4	128114	GRID, DRIP TRAY	1 EA
5	122052-CH	DRIP TRAY, BISTRO	1 EA

\*Assembly includes Drip Tray Grid (PN 128114) & plastic Drip Tray (PN 122052-CH)

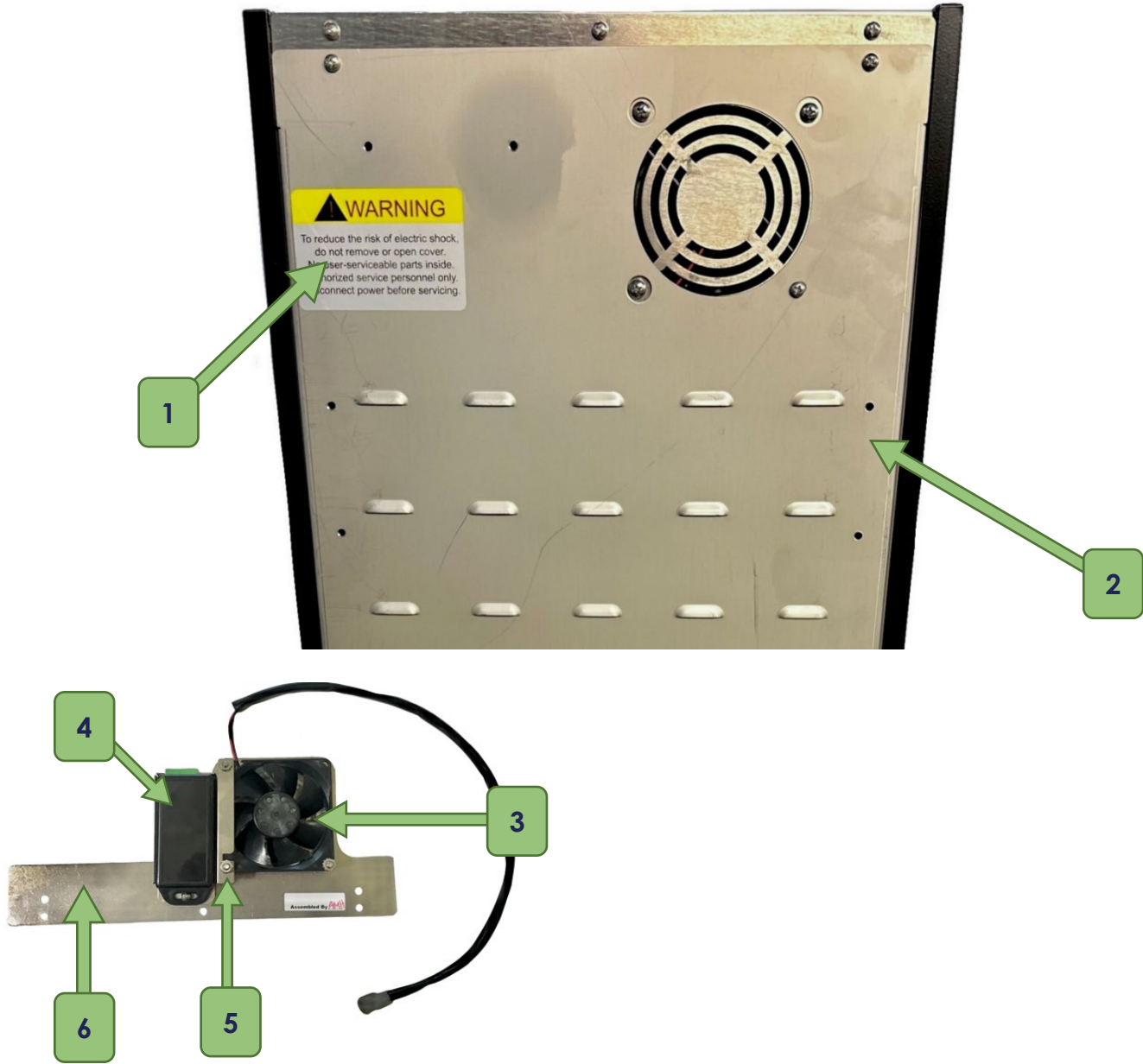
# SIDE CAR ACCESSORY



	<b>128269-BPC</b>	<b>SIDECAR ACCESSORY, BISTRO TOUCH LARGE CAPACITY</b>	
1	128270-BPC	DOOR, SIDE CAR ASSEMBLY	1 EA
2	128335	LABEL, BAG IN BOX INSTRUCTIONS, SIDECAR*	1 EA
3	102065	MAGNET, DOOR	1 EA
4	205083	BULKHEAD UNION	2 EA
5	128307	TUBE ASSEMBLY WITH SCHOLLE CONNECTORS	2 EA
6	128304	EXTERNAL TUBES, 20", BISTRO LARGE	2 EA

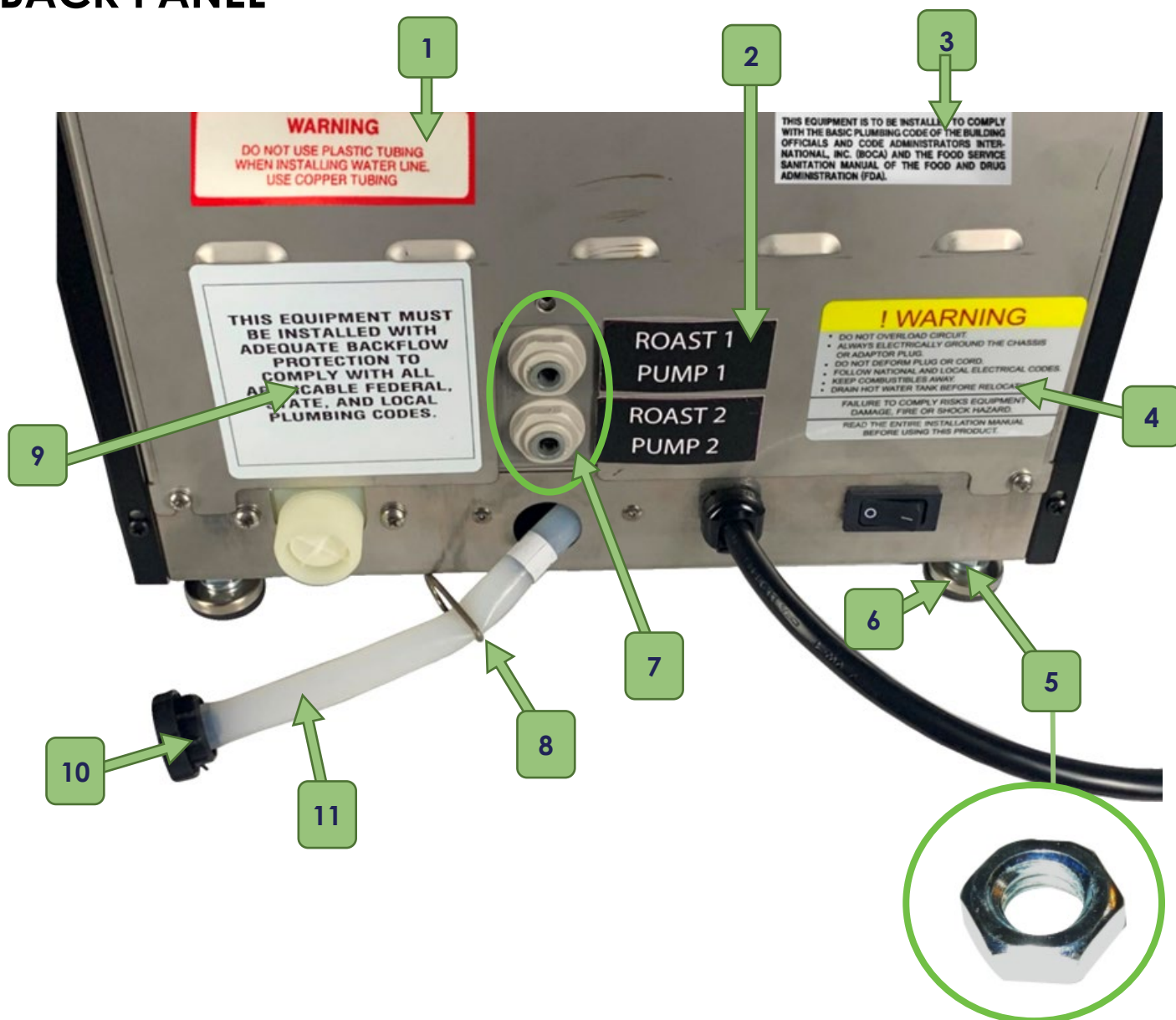
\* See pg. 13 for more information

# BACK PANEL



1	100821	LABEL, WARNING, ELECTRIC SHOCK	1 EA
2	128360	PANEL, BACK, BISTRO LARGE CAPACITY	1 EA
3	103600	FAN WITH HARNESS	1 EA
4	122165	CONVERTER, POWER ASSEMBLY 24AC/ 12DC	1 EA
5	122186	BRACKET, MOUNTING AD/DC ADAPTOR	1 EA
6	128342	BRACKET, MOUNTING, FAN	1 EA

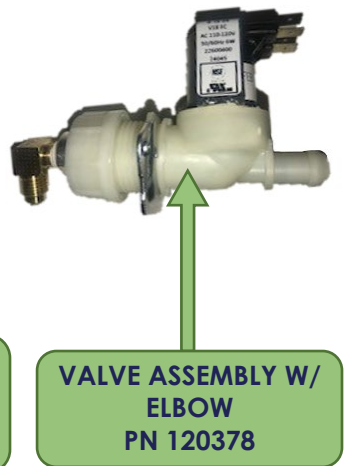
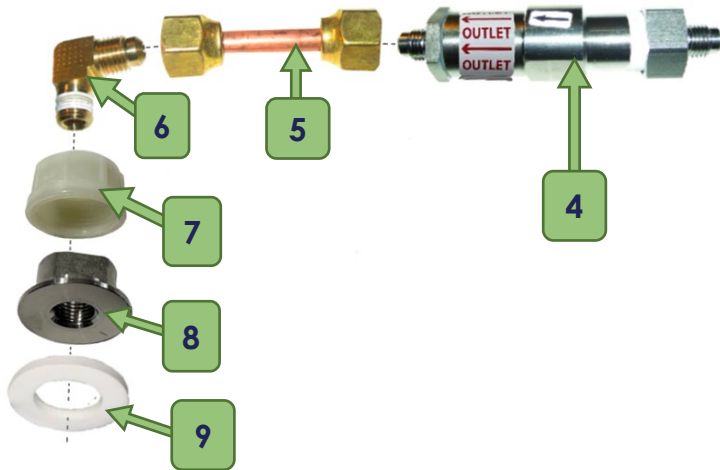
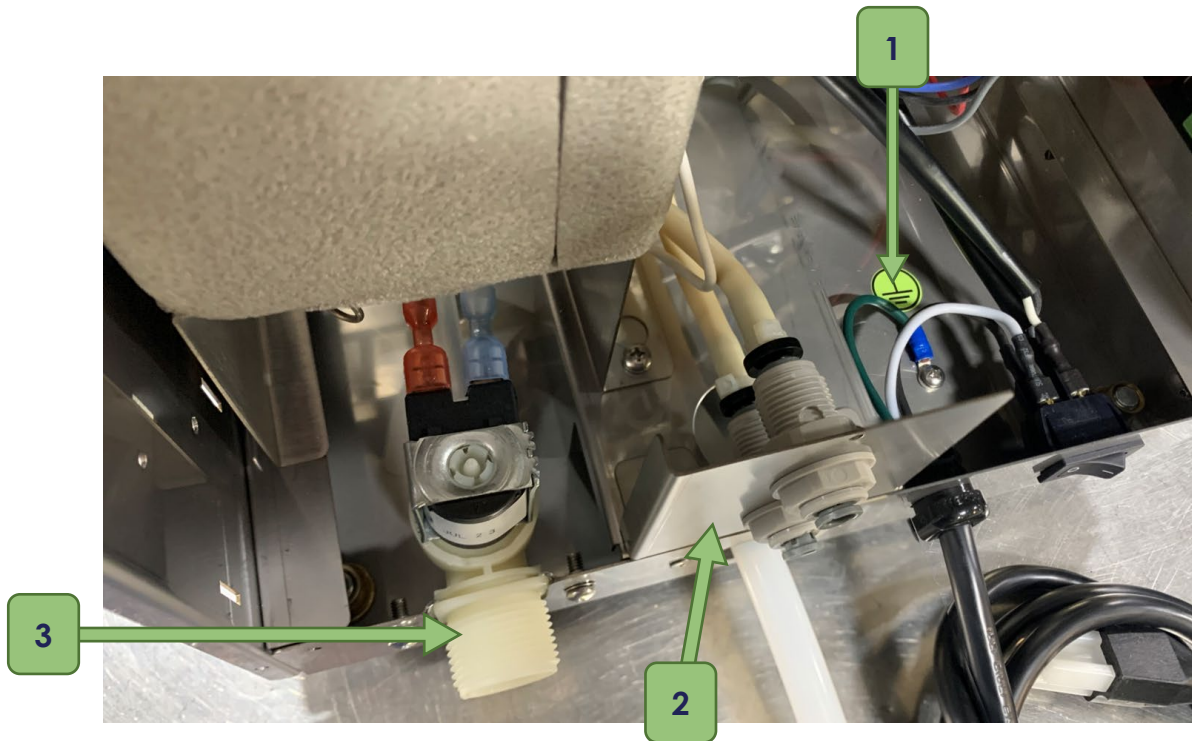
## BACK PANEL



1	101025	LABEL, WARNING AUTO FAUCET	1 EA
2	128313	LABEL SET, PUMP/ROAST 1&2	1 EA
3	101012	LABEL, PLUMBING INSTRUCTIONS	1 EA
4	100817	LABEL, WARNING, PRECAUTIONS	1 EA
5	111667	NUT, 3/8-16	4 EA
6	111377	APPLIANCE FOOT	4 EA
7	205083	BULKHEAD UNION	2 EA
8	120578	CLAMP, DRAIN	1 EA
9	123062	LABEL, BACKFLOW PREVENTION	1 EA
10	120575	PLUG, TANK DRAIN	1 EA
11	121449	DRAIN TUBE	1 EA



## INLET AREA



1	101037	DECAL, GROUND SYMBOL	1 EA
2	128289	PLATE ADAPTOR FITTING, BISTRO	1 EA
3	201175	SOLENOID VALVE ASSEMBLY	1 EA
4	202103	STRAINER ASSEMBLY, 1/4FL, S/S	1 EA
5	704209	TUBE ASSEMBLY	1 EA
6	100177	ELBOW, MALE, 1/4FX1/8	1 EA
7	111177	NUT, PLASTIC	1 EA
8	101377	FITTING, SOLENOID, TIN PLATED	1 EA
9	111178	GASKET	1 EA

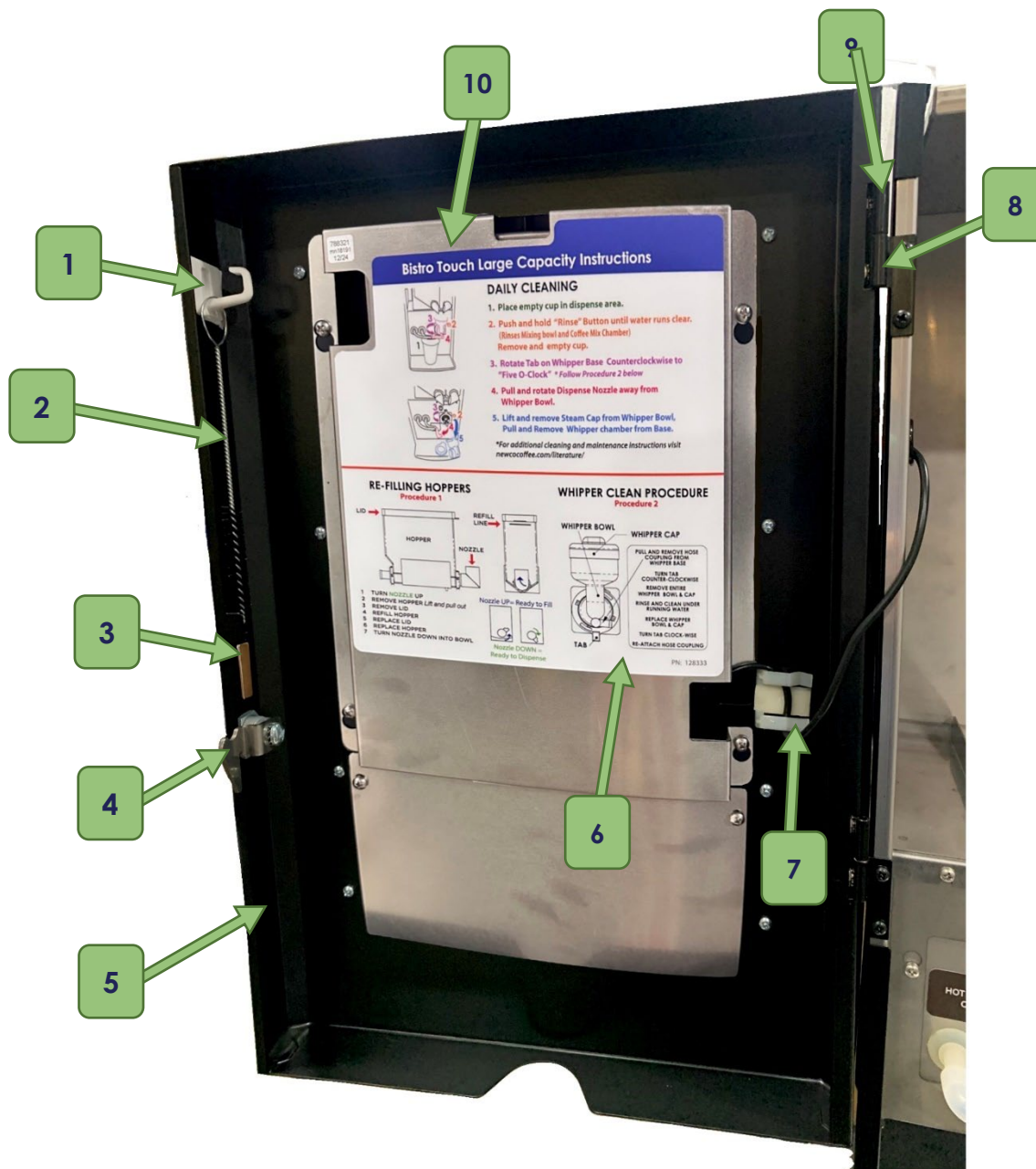


# DOOR



	<b>128334</b>	<b>DOOR ASSEMBLY</b>	<b>1 EA</b>
1	128231	TABLET, BISTRO, 10IN, PRETECH	1 EA
2	122051	DOOR FRAME, BISTRO TOUCH, PLASTIC	1 EA
3	123654	LABEL, BISTRO TOUCH, PRETECH	1 EA
4	120558	LOCK ASSEMBLY	1 EA
5	121828	KEYS, LOCK ASSEMBLY	1 EA

# DOOR



1	104023	HOOK,BRUSH HOLDER	1 EA
2	111622	BRUSH	1 EA
3	121301	MAGNET,1/2*1-IN*1/4	1 EA
4	128193	LATCH, EXTENDED ARM, BISTRO TOUCH	1 EA
5	128126-BPC	PANEL, DOOR, BPC, BISTRO TOUCH	1 EA
6	128333	LABEL,CLEANING INSTRUCTIONS	1 EA
7	781697	CLAMP, ADHESIVE	1 EA
8	781258-B	HINGE,MALE, BLACK, CAPPUCCINO	2 EA
9	781259-B	HINGE, FEMALE, BLACK, CAPPUCCINO	2 EA
10	128182	COVER, TABLET, 10IN, BISTRO	1 EA
N/S	128237	BRACKET, TABLET, 10",BIS/LC,P/T,SS	1 EA

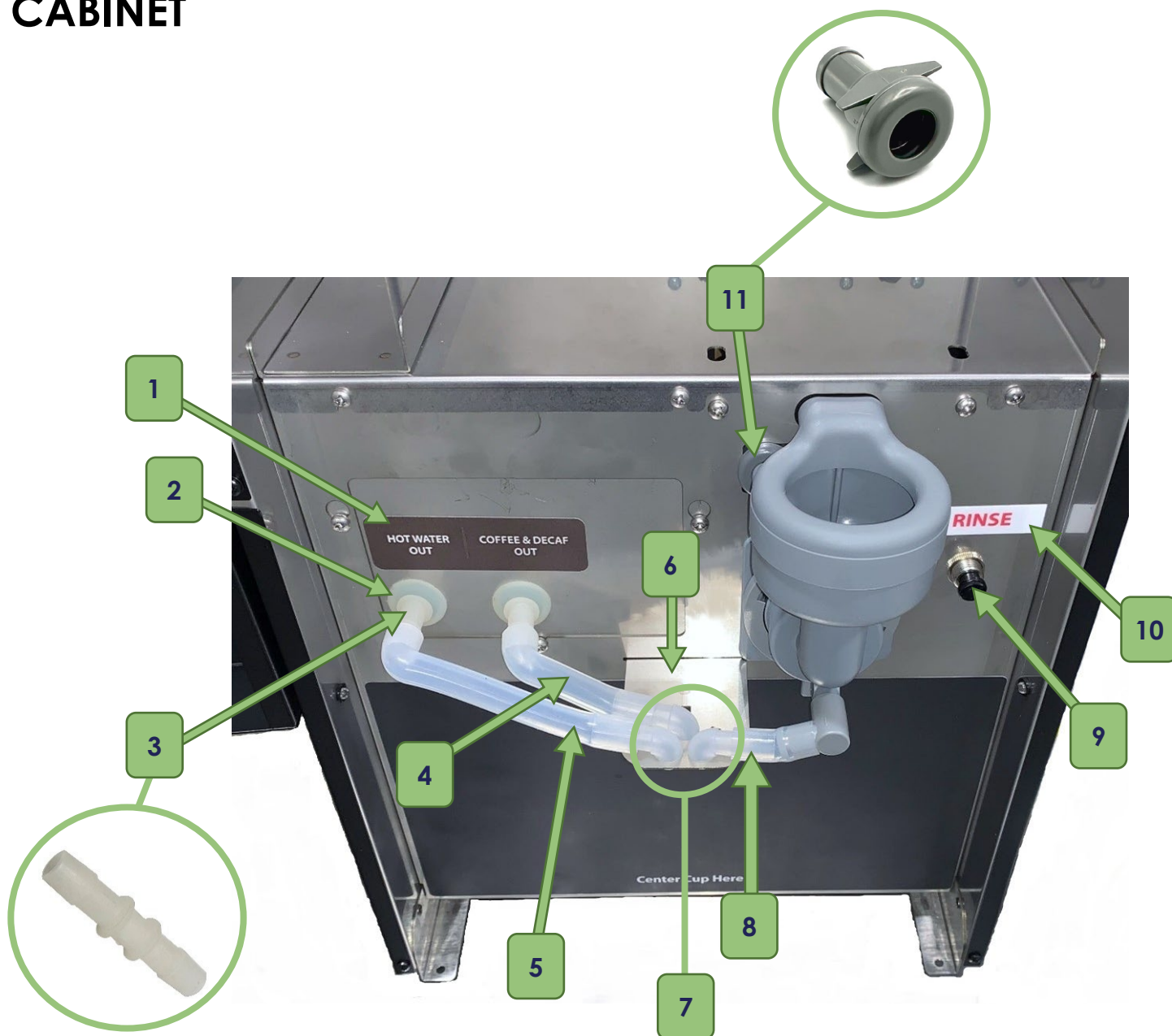
# CABINET



1	103416	SWITCH, MOMENTARY, PUSH/PULL	2 EA
2	123056	LABEL, MILK, HOPPER, BISTRO	1 EA
3	123057	LABEL, CHOCOLATE, HOPPER, BISTRO	1 EA
4	128294	HOPPER, SHELF GUIDE ASSEMBLY	1 EA

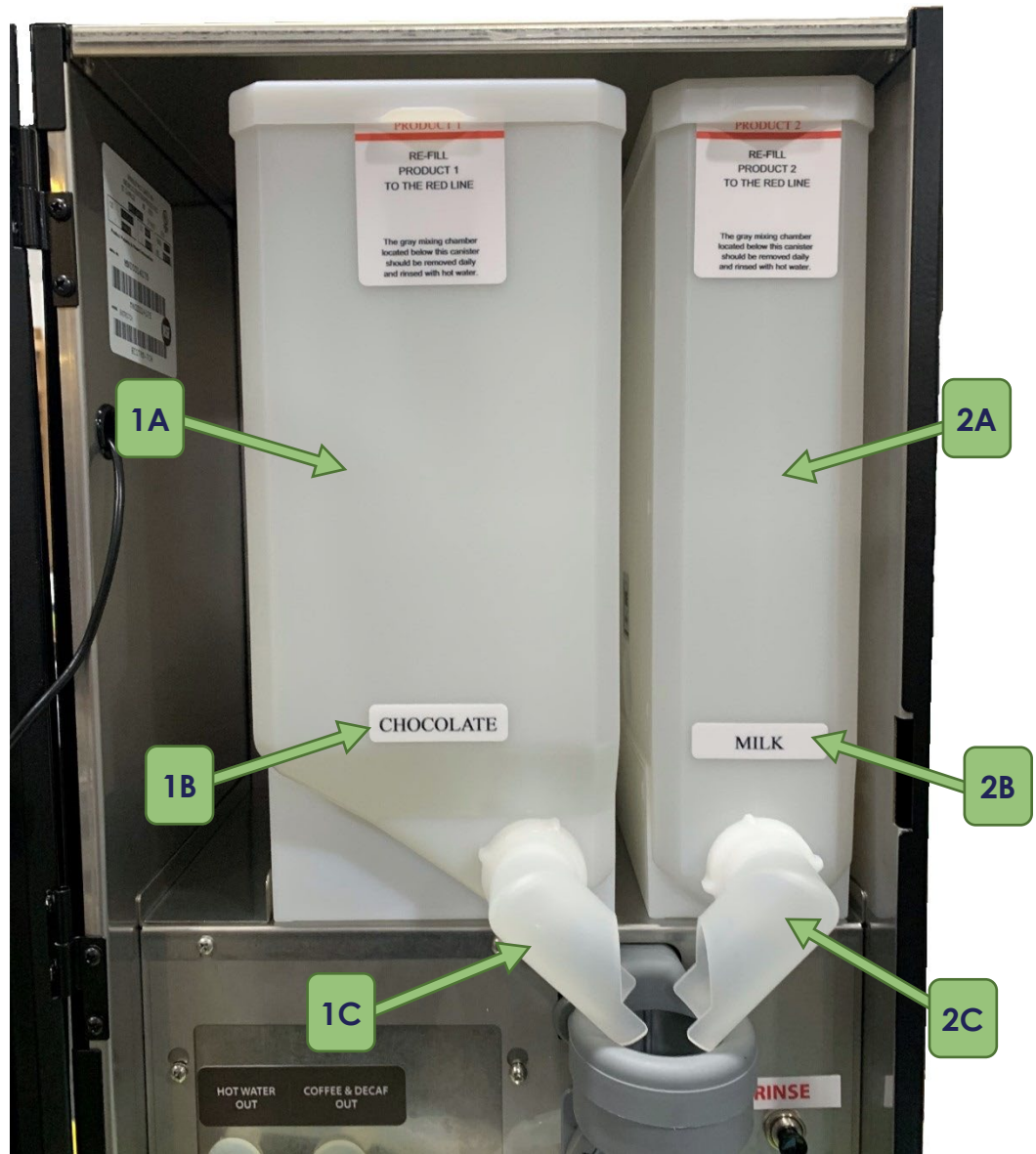


# CABINET



1	128262	LABEL, HOT WATER OUT/ COFFEE AND DECAF OUT	1 EA
2	101938	GROMMET	2 EA
3	123068	COUPLER	2 EA
4	128154	TUBE, SILICONE, RIGHT ANGLE, 2.50"	1 EA
5	123118	TUBE, SILICONE, RIGHT ANGLE, 4.0"	1 EA
6	123017	BRACKET, HOSE POSITION, BISTRO	1 EA
7	123018	NOZZLE, DISPENSE, BISTRO	3 EA
8	123054	TUBE, SILICONE, 1.25"	1 EA
9	100343-10	RINSE BUTTON	1 EA
10	400526	RINSE LABEL	1 EA
11	781040	BULKHEAD, CAPPAC WATER (1 of 2)	2 EA

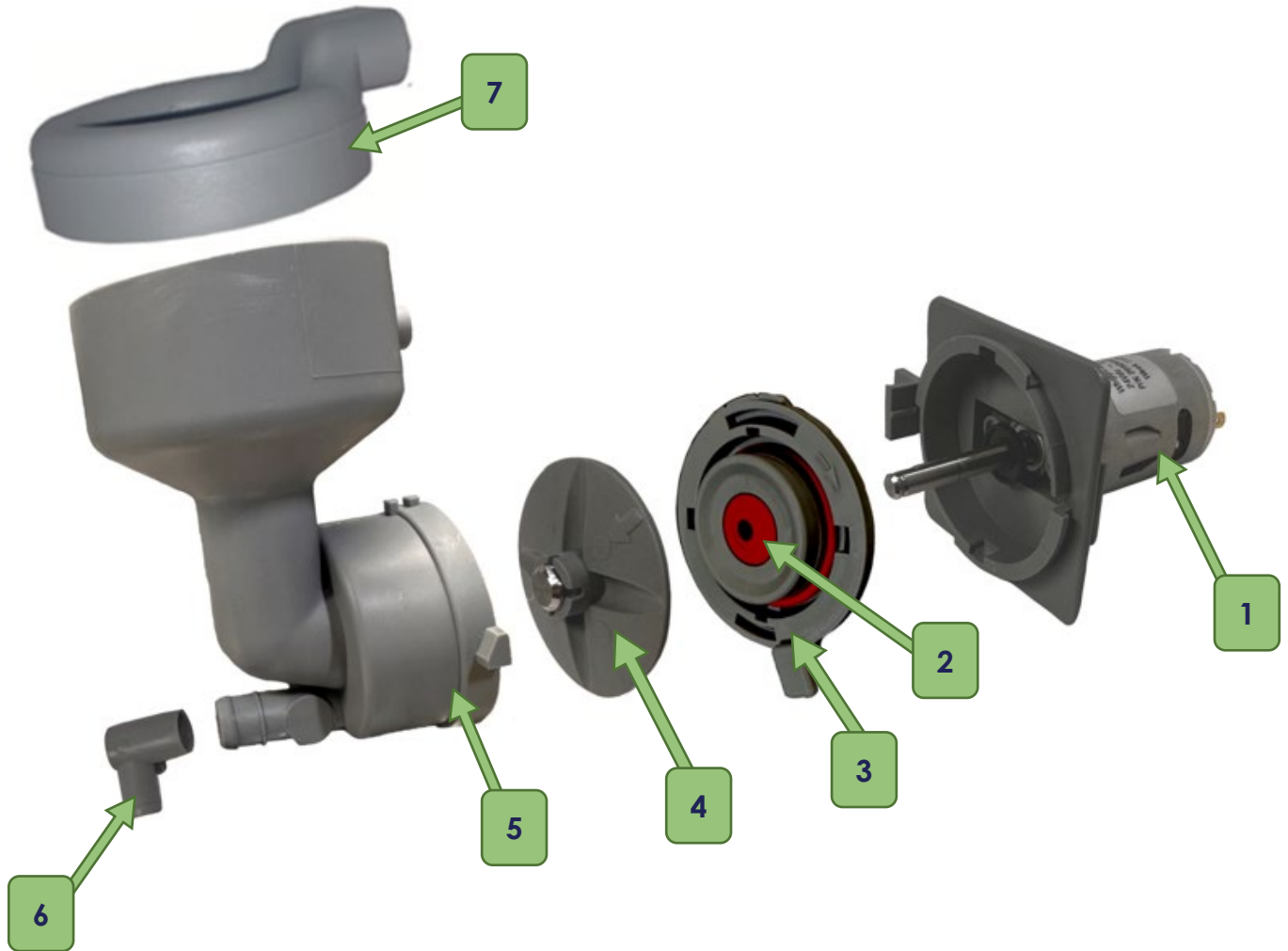
# HOPPERS



	<b>128314</b>	<b>HOPPER ASSEMBLY, LEFT HAND, BISTRO TOUCH</b>	<b>1 EA</b>
1A	128315	HOPPER ASSEMBLY, 8LB	1 EA
1B	123057	LABEL, CHOCOLATE HOPPER	1 EA
1C	767201	HOPPER ELBOW, LEFT	1 EA
	<b>128112</b>	<b>HOPPER ASSEMBLY, RIGHT HAND, BISTRO TOUCH</b>	<b>1 EA</b>
2A	128144	HOPPER ASSEMBLY, 4LB	1 EA
2B	123056	LABEL, MILK HOPPER	1 EA
2C	767202	HOPPER ELBOW, RIGHT	1 EA

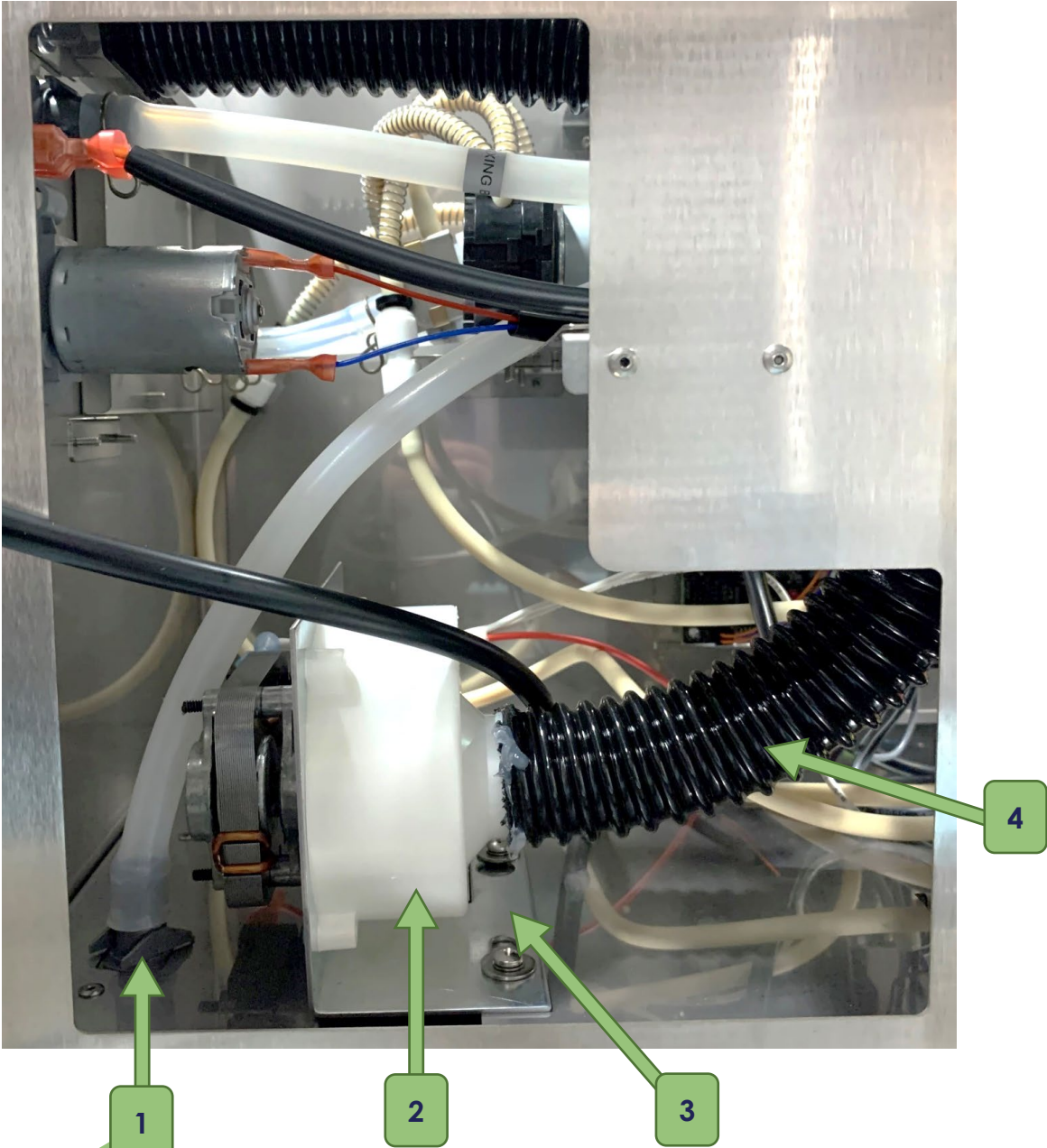


# WHIPPER ASSEMBLY



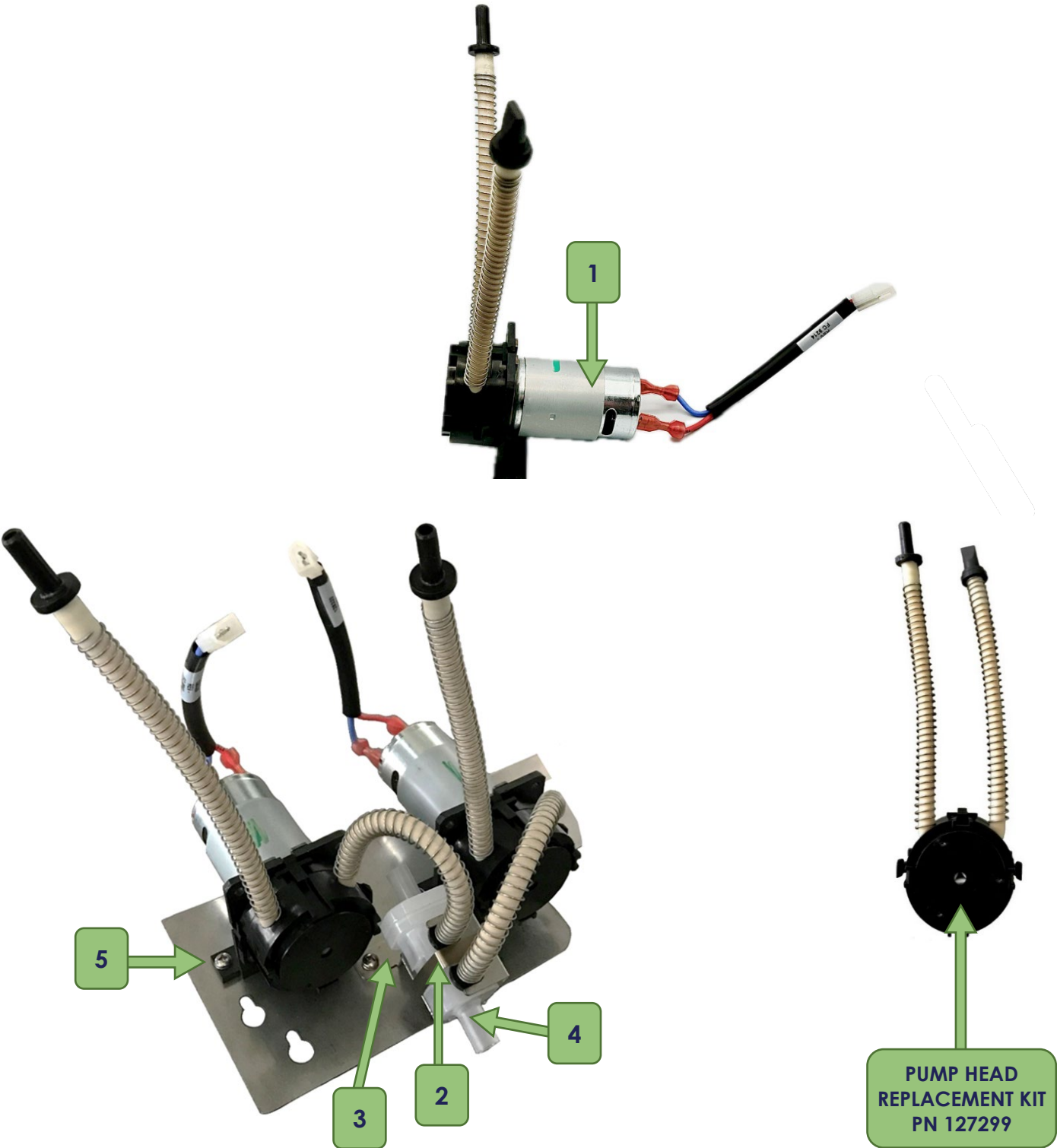
	<b>767377</b>	<b>WHIPPER ASSEMBLY</b>	<b>1 EA</b>
<b>1</b>	767195	MOTOR, WHIPPER	1 EA
<b>2</b>	781566	WHIPPER SEAL	1 EA
<b>3</b>	767196	BASE, WHIPPER	1 EA
<b>4</b>	767197	IMPELLER, WHIPPER	1 EA
<b>5</b>	767365	BOWL, WHIPPER	1 EA
<b>6</b>	767200	NOZZLE, WHIPPER	1 EA
<b>7</b>	767376	CAP, STEAM, WHIPPER	1 EA

# FAN MOTOR



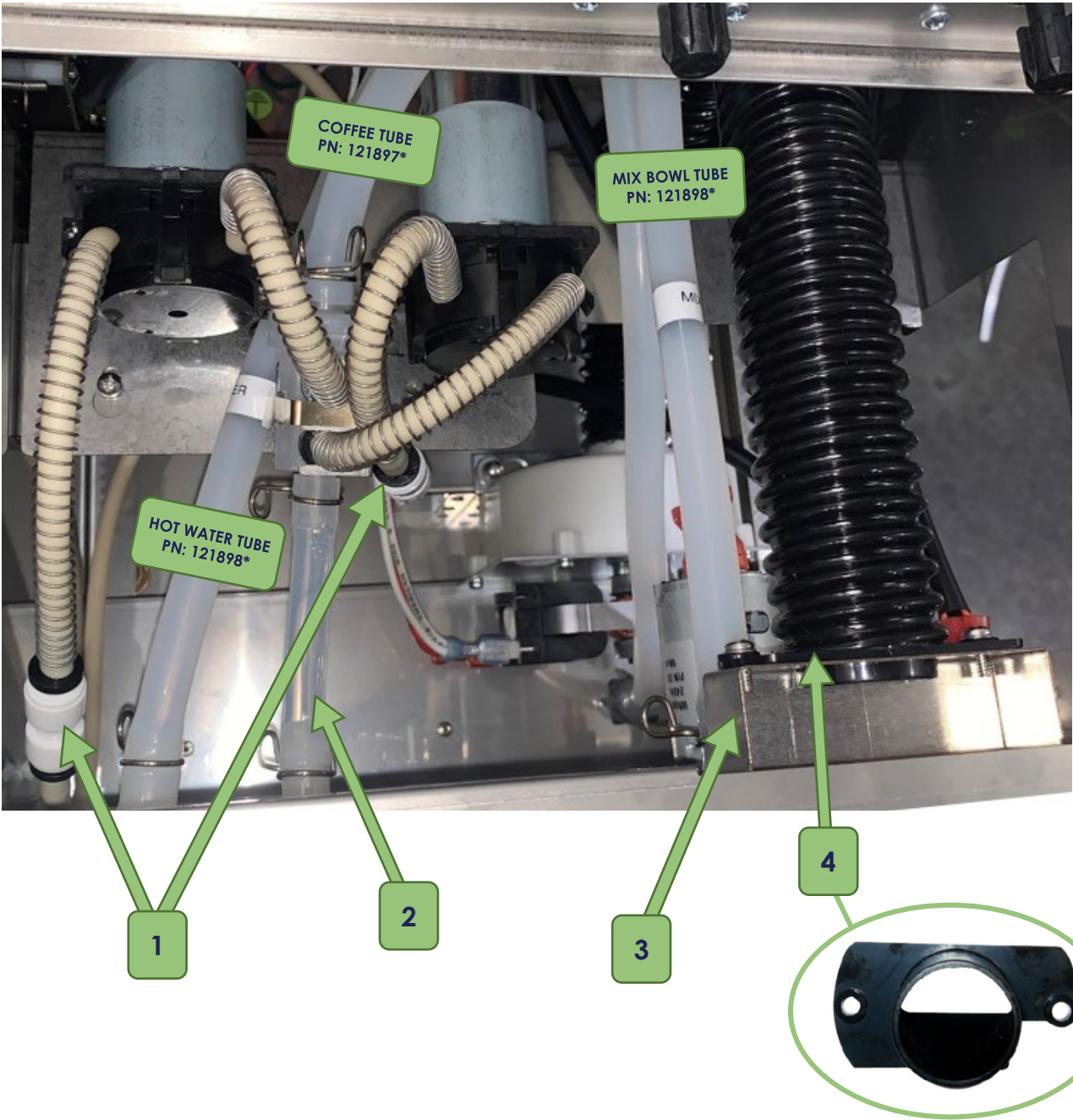
1	781040	BULKHEAD, CAPPAC WATER (2 of 2)	2 EA
2	781647	MOTOR, BLOWER, MINI CAPP	1 EA
3	128163	SUPPORT, BLOWER, BISTRO TOUCH	1 EA
4	767398	HOSE, BLACK, PVC	1 EA

PUMPS



1	128303	PUMP W/ HARNESS & MOTOR	2 EA
2	120436	WIREFORM CLIP, MIXING CHAMBER	1 EA
3	128185	RETAINER, MIXING CHAMBER	1 EA
4	104161	CHAMBER, MIXING, DOUBLE STEM	1 EA
5	128168	BRACKET, MOUNT, PUMPS, BISTRO TOUCH	1 EA

PUMPS

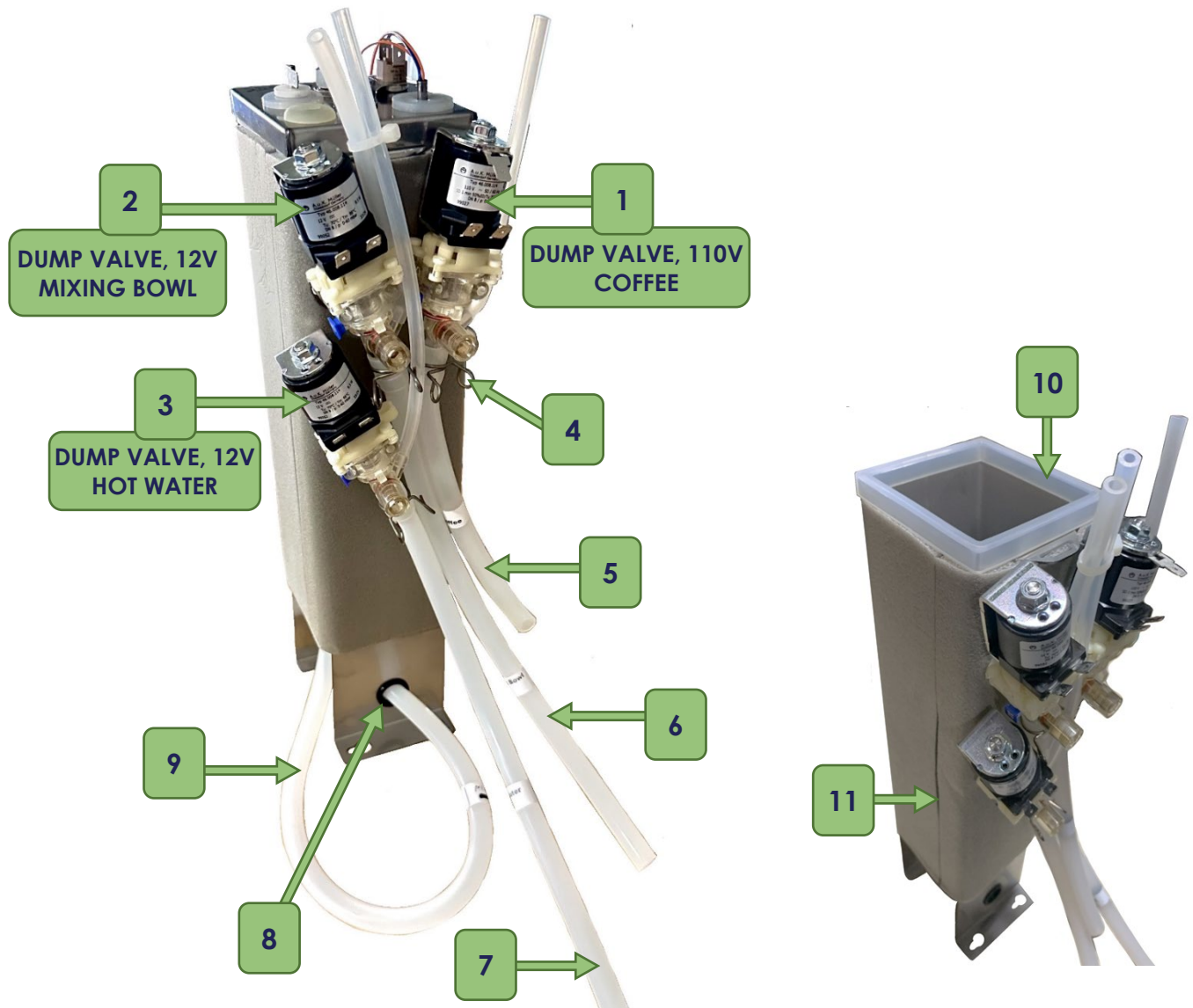


1	708131	JOHN GUEST QC UNION	2 EA
2	123132	SILICONE TUBE, 3.50"	1 EA
3	780084	BRACKET, SUCTION MOUNT	1 EA
4	781718	MANIFOLD, SUCTION, BISTRO	1 EA

\* See pg. 28 for more information



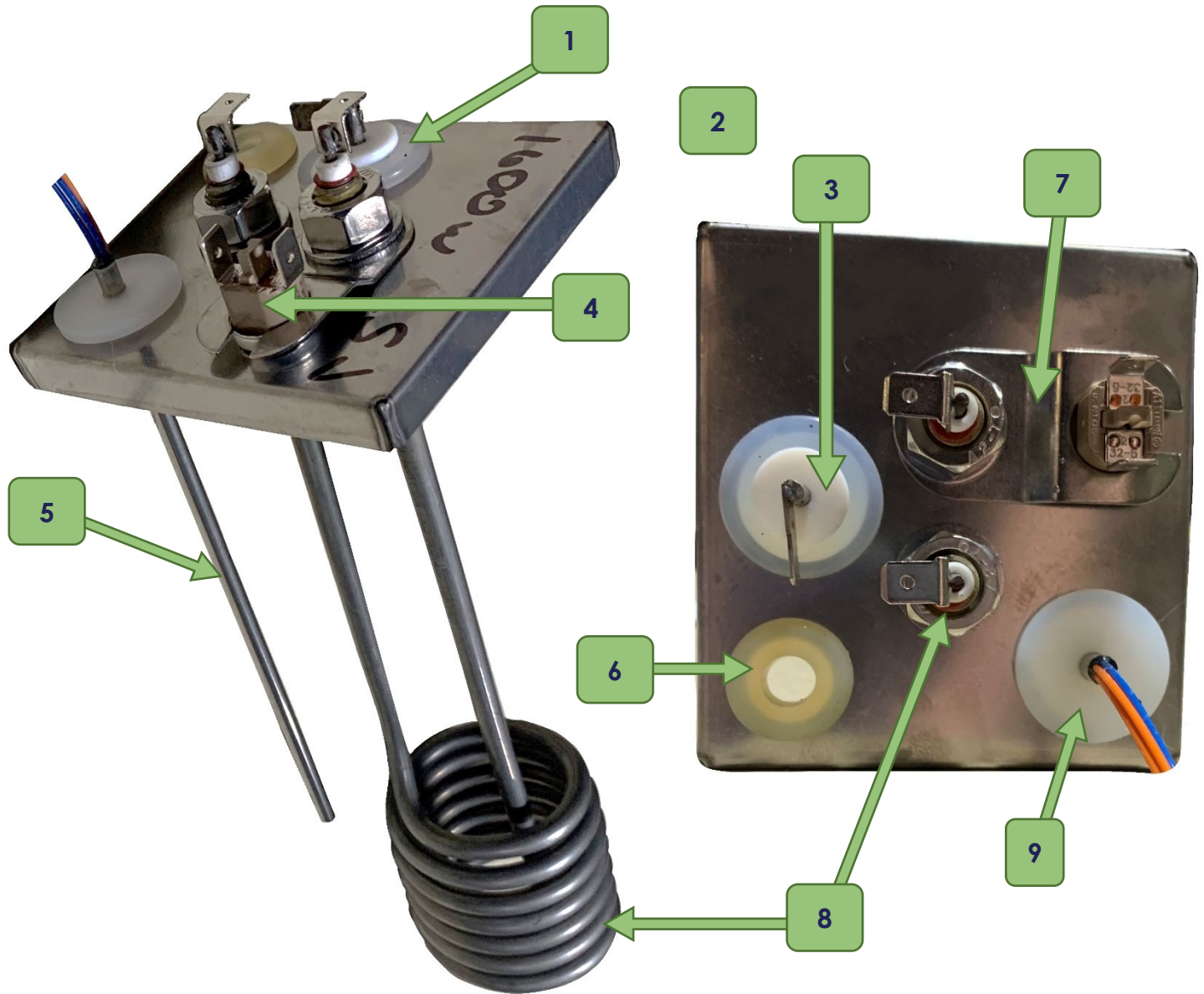
# TANK ASSEMBLY



	128141	TANK ASSEMBLY	1 EA
1	123111	DUMP VALVE, MULLER, <b>110V</b> & GROMMET ( <b>COFFEE</b> )	1 EA
2	123110	DUMP VALVE, MULLER, <b>12V</b> & GROMMET ( <b>MIXING BOWL</b> )	1 EA
3	123117	DUMP VALVE, MULLER, <b>12V</b> , WITH 8" VENT ( <b>HOT WATER</b> )	1 EA
4	411039	CLAMP, HOSE, .510 ID	4 EA
5	121897	SILICONE TUBE, 8.375", COFFEE	1 EA
6	121898	SILICONE TUBE, 13.5", MIXING BOWL	1 EA
7	121898	SILICONE TUBE, 13.5", HOT WATER	1 EA
8	100003	BUSHING, SNAP, PLASTIC	2 EA
9	121449	SILICONE TUBE, 20", DRAIN TUBE	1 EA
10	120929	GASKET, TANK	1 EA
11	120898	TANK BODY	1 EA
N/S	121348	TUBE, SILICONE, RIGHT ANGLE	1 EA

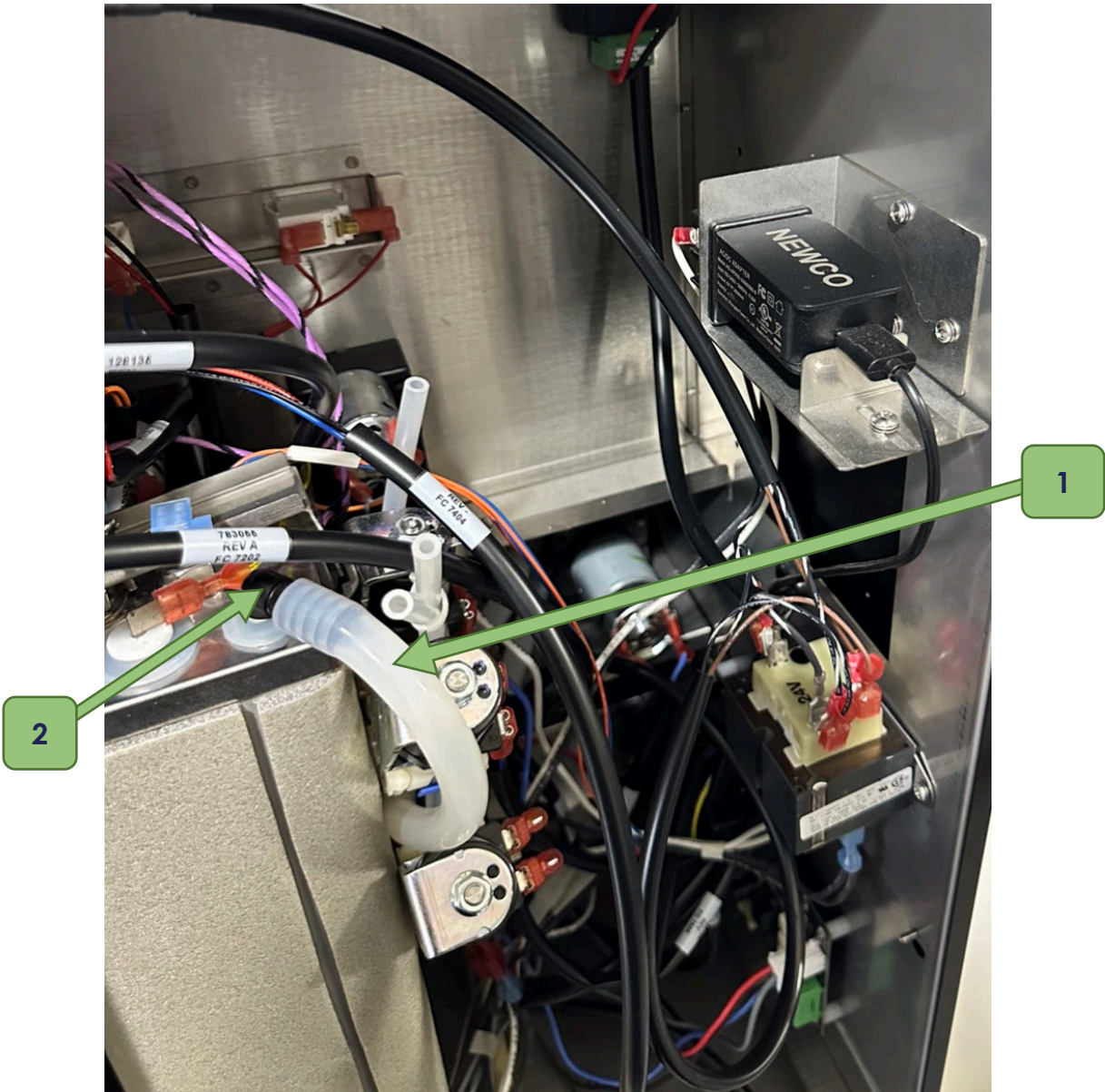


# TANK LID ASSEMBLY



	<b>120899</b>	<b>TANK LID ASSEMBLY, 1600W</b>	<b>1 EA</b>
<b>1</b>	500350	GROMMET, PROBE, BUSHNG, 5/16	1 EA
<b>2</b>	120927	TANK LID, PUNCHED	1 EA
<b>3</b>	500398	KIT, PROBE, 1.818"	1 EA
<b>4</b>	111593	THERM, MAN,VERTAB	1 EA
<b>5</b>	151677	PROBE, TEMPERATURE, DUAL	1 EA
<b>6</b>	101938	GROMMET, SILICONE	1 EA
<b>7</b>	100269	BRACKET, HI-LIMIT	1 EA
<b>8</b>	120928	ELEMENT ASSEMBLY, 1600W, 120V	1 EA
<b>9</b>	500038	GROMMET, SILICONE, .060, NO SLIT	1 EA

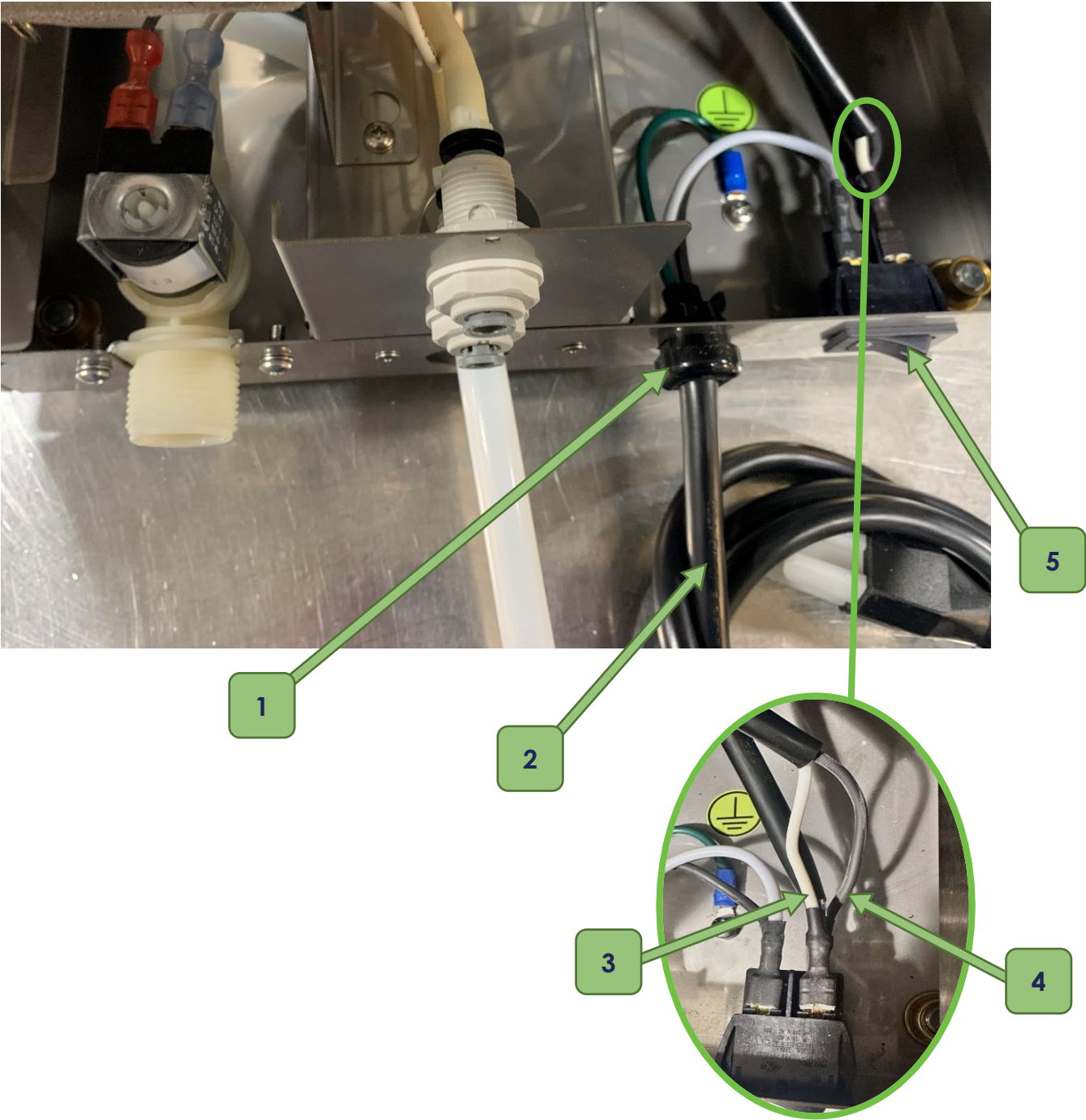
# OVERFLOW TUBE



1	121895	OVERFLOW TUBE	1 EA
2	120159	ELBOW, 3/8X3/8	1 EA

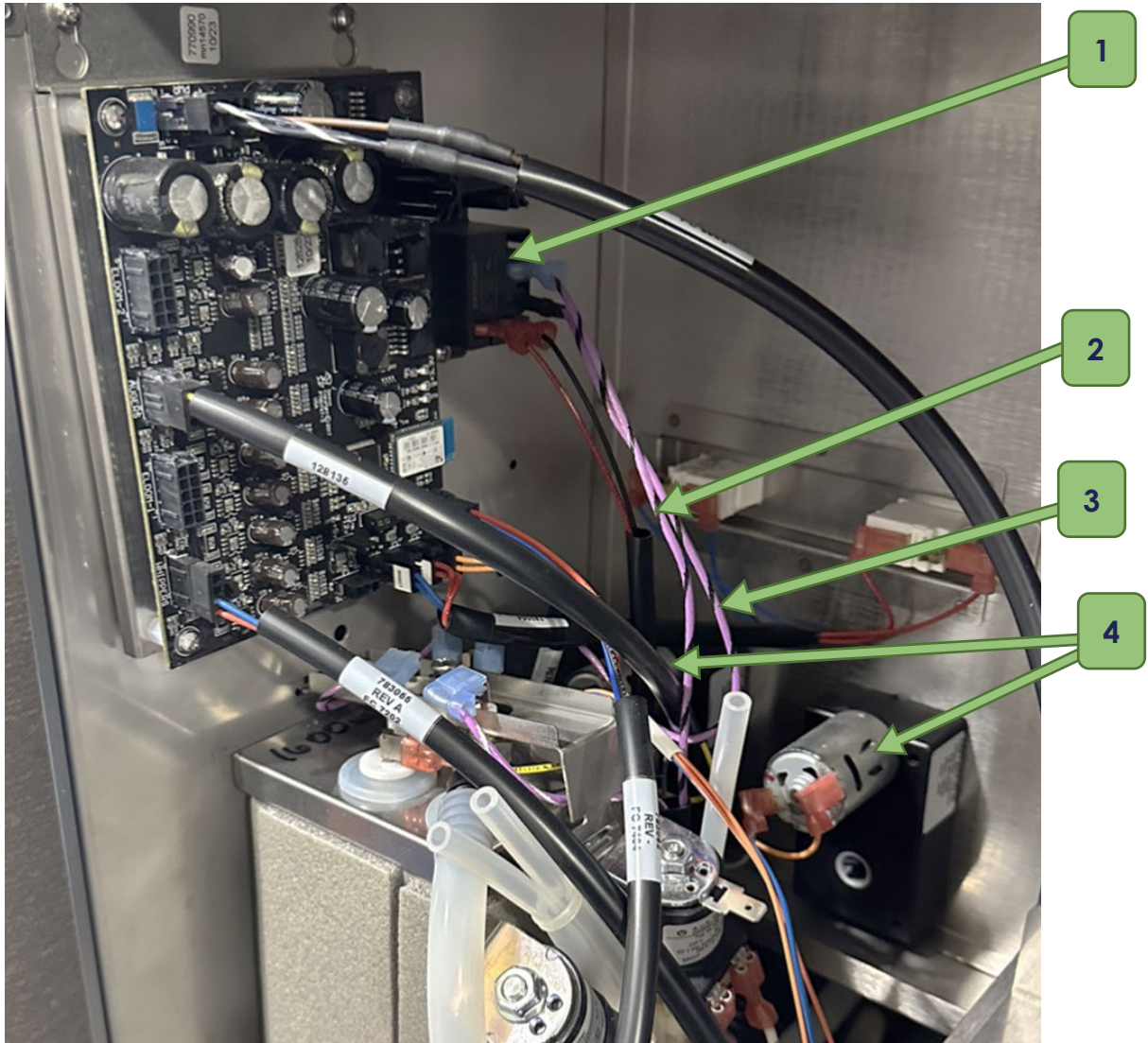


MOTORS & ELECTRICAL COMPONENTS



1	101035	GROMMET, STRAIN RELIEF, POWER CORD	1 EA
2	781843	POWER CORD	1 EA
3	128192	18GA WHITE TEF 6-5B POWER SWITCH	1 EA
4	128191	18GA BLACK TEF 6-5B POWER SWITCH	1 EA
5	110626	POWER SWITCH	1 EA

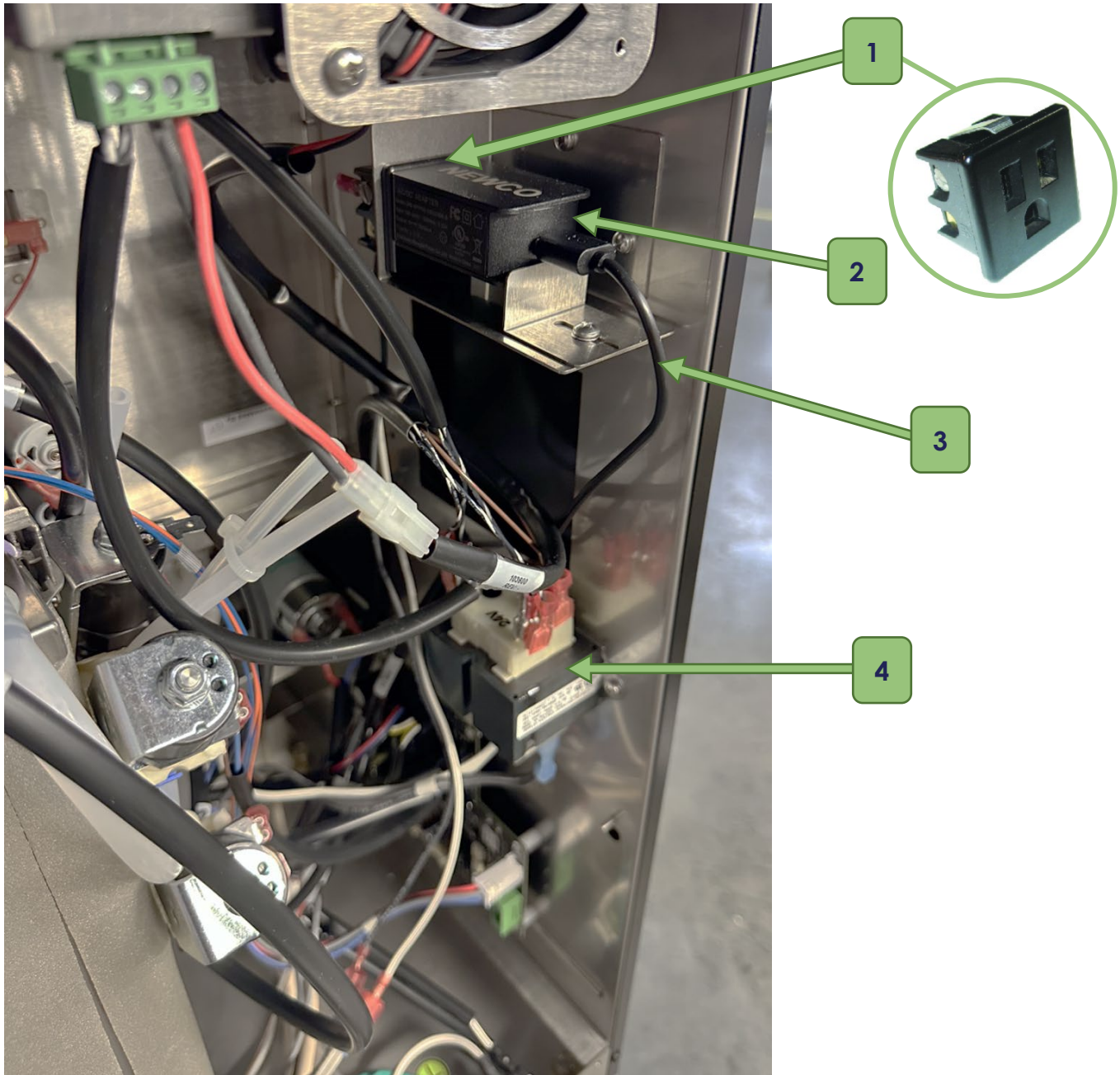
# MOTORS & ELECTRICAL COMPONENTS



1	122091	RELAY,12VDC	1 EA
2	103016	14GA VIOLET/BLACK 10 TEF 1S-2N	1 EA
3	120580	14GA VIOLET/BLACK 5 TEF 2-2	1 EA
4	781587	MOTOR, AUGER	2 EA

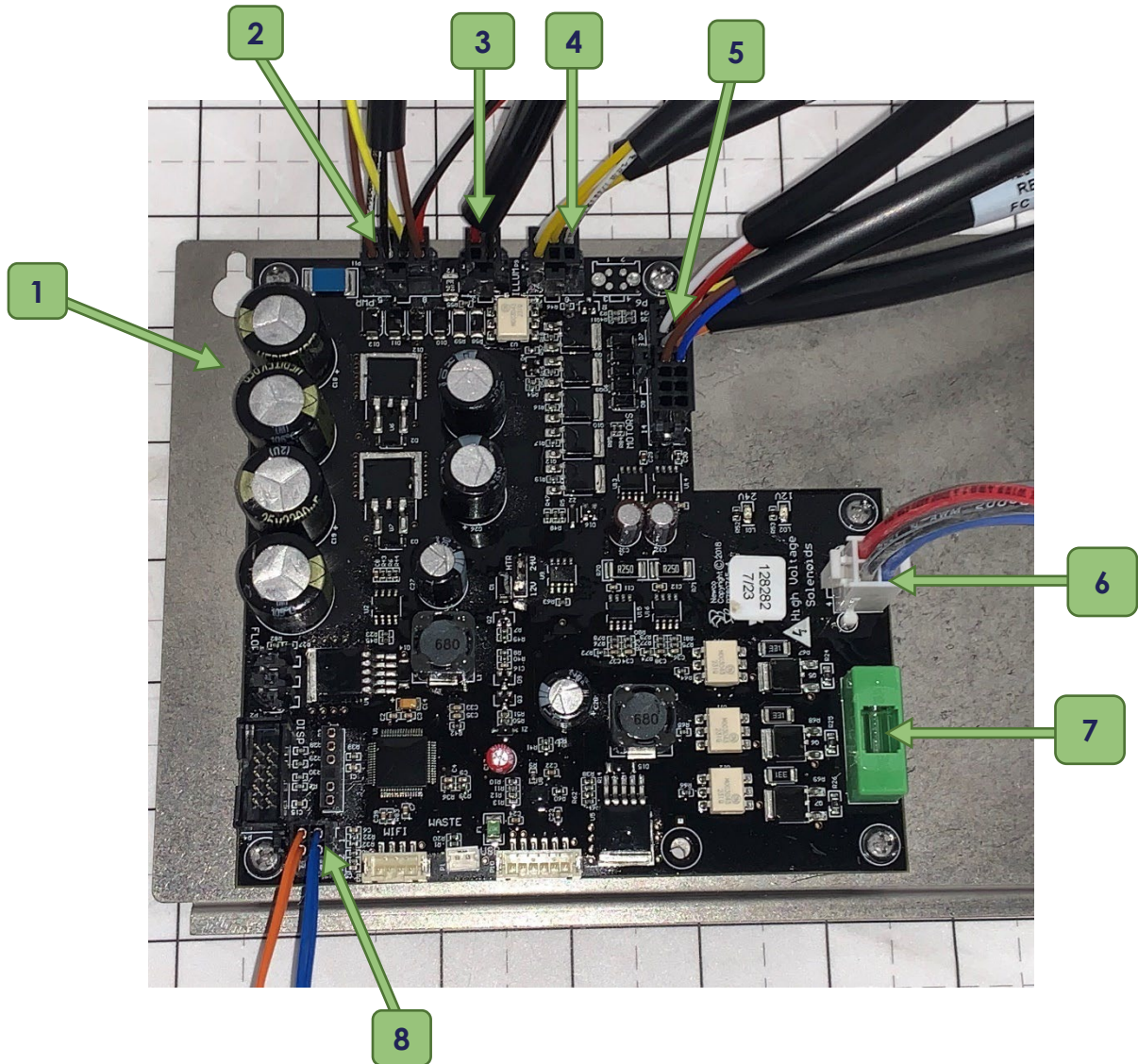


# MOTORS & ELECTRICAL COMPONENTS



1	100340	OUTLET, CONVENIENCE	1 EA
2	782530	POWER SUPPLY CHARGER, PRETECH TABLET	1 EA
3	782531	USB CORD, PRETECH TABLET	1 EA
4	105115	TRANSFORMER, 120VP, 24VCT 40VA	1 EA

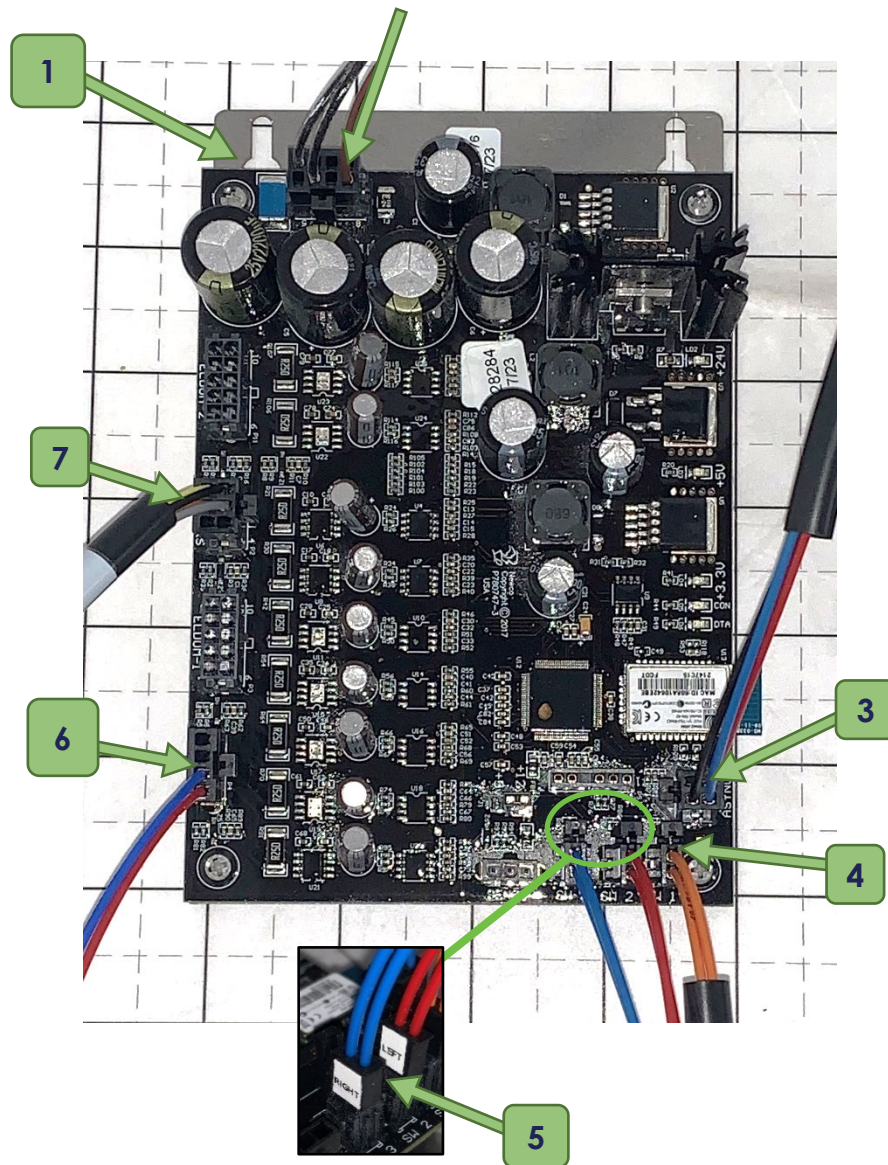
# MAIN CONTROL BOARD



1	128281	CONTROL BOARD ASSEMBLY, BISTRO LARGE CAPACITY	1 EA
2	783060	HARNESS, TRANSFORMER/ TANK, BISTRO TOUCH	1 EA
3	783062	HARNESS, COMMUNICATION, BISTRO TOUCH	1 EA
4	128140	HARNESS & LED, BISTRO TOUCH	1 EA
5	128134	HARNESS, PUMP, BISTRO TOUCH	1 EA
6	128115	HARNESS, LINE BISTRO TOUCH	1 EA
7	103336	FUSE, 125V	1 EA
8	151677	PROBE, TEMPERATURE, DUAL, 7.312, THERM	1 EA

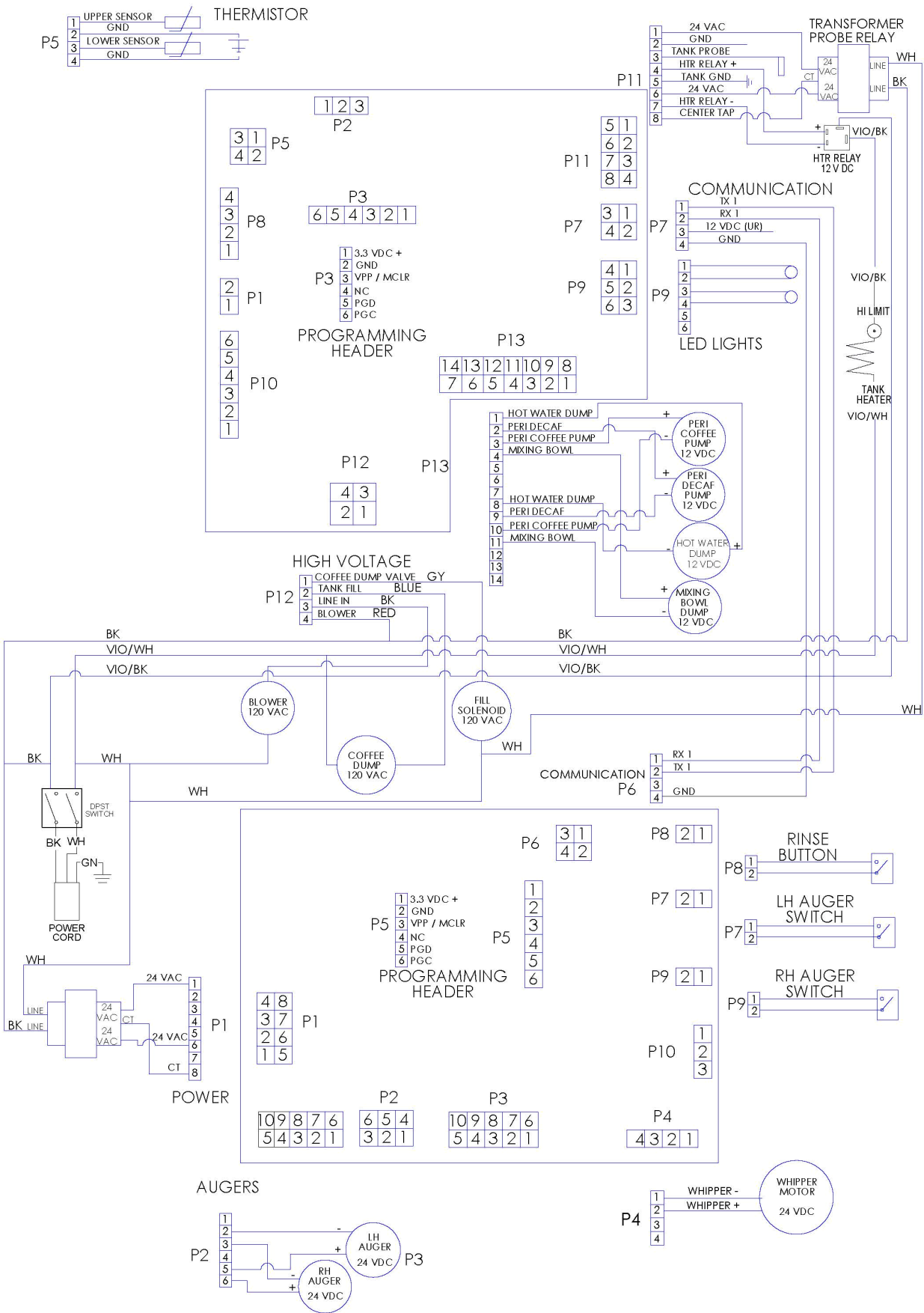


# AUXILIARY BOARD



1	128324	AUXILIARY BOARD ASSEMBLY, BISTRO LARGE CAPACITY	1 EA
2	783057	HARNESS, TRANSFORMER #2, BISTRO TOUCH	1 EA
3	783062	HARNESS, COMMUNICATION, BISTRO TOUCH	1 EA
4	123025	HARNESS, RINSE, BISTRO TOUCH	1 EA
5	783054	HARNESS, LEFT AND RIGHT HOPPER SWITCHES	1 EA
6	783055	HARNESS, WHIPPER, BISTRO TOUCH	1 EA
7	128135	HARNESS, AUGER, BISTRO TOUCH	1 EA

WIRING DIAGRAM





## MISCELLANEOUS

N/S	900083	CLEANER,EASY CLEAN	1 EA
N/S	780868	LUBRICANT,FOOD GRADE, 0.25oz	1 EA