

MODEL 872D MODEL 873N

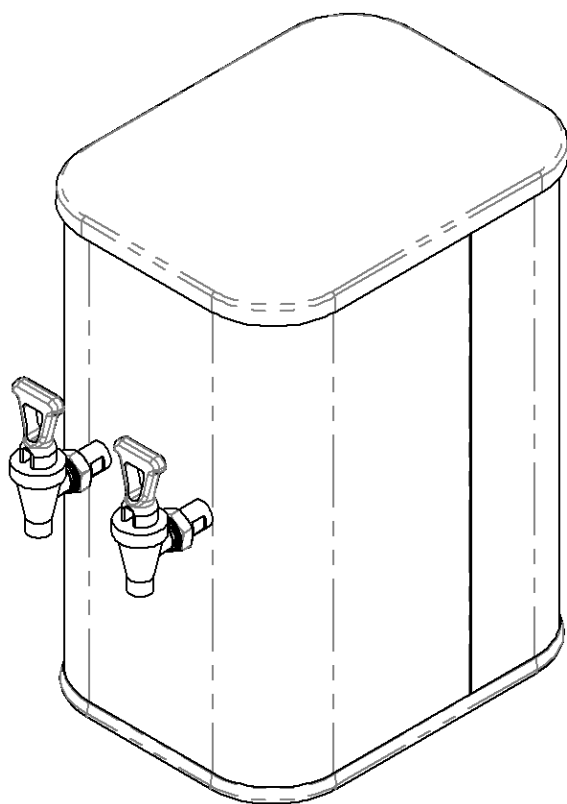
MODEL 872B

POST-MIX BEVERAGE DISPENSER

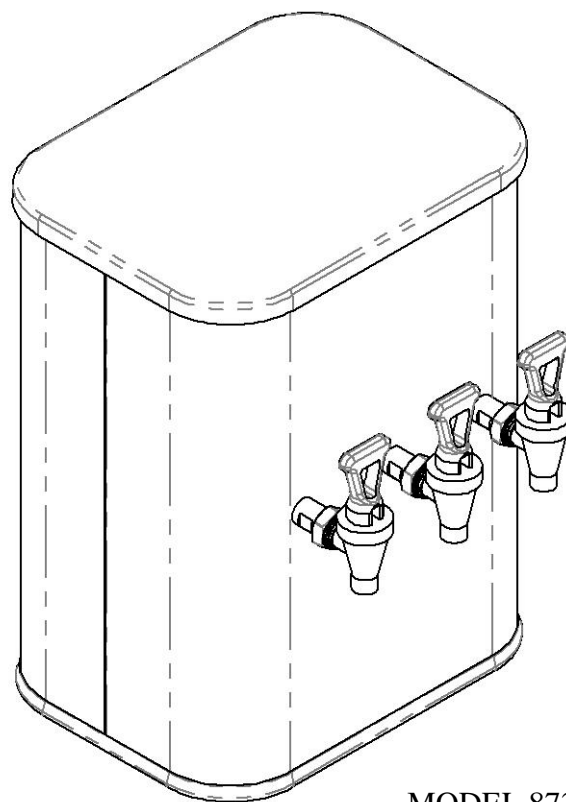
FOR USE WITH BAG-IN-BOX



The Post-Mix Beverage Series utilizes a venturi valve to mix the tea syrup with the water. A built-in water pressure regulator ensures the proper amount of syrup is being mixed with the proper amount of water. This built-in pressure regulator is factory adjusted for a static pressure of 18 pounds.



MODEL 872D



MODEL 873N



3650 New Town Blvd.
St. Charles MO, 63301
www.Newcocooffee.com
636.925.1202
800.325.7867

MODEL #	WIDTH	DEPTH	HEIGHT
872D	9.8	12.8	17.1
873N	12.8	9.8	17.1
872B	9.8	12.8	23.4

Installation

1. Carefully remove the dispenser from the shipping carton.
2. **Before attaching the waterline to the dispenser, flush the waterline to remove any foreign particles that may be in the line.**

NOTE: It is advisable to use a lime, scale, sediment, taste and odor purification charcoal water filter where water quality is a concern.

3. Connect waterline to inlet fitting on rear of dispenser. Fitting may vary.
4. Turn on the water source to the dispenser.
5. Turn the yellow handle to the ON position to allow water to flow through the urn.

Water
On



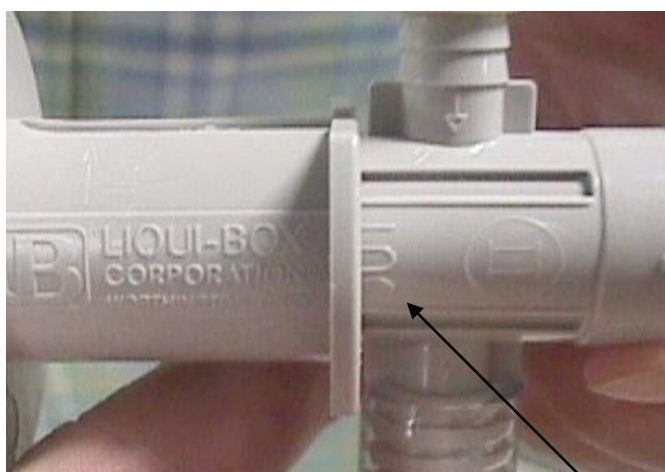
Water
Off

RIDGE

Product Loading

1. Open the BIB along the perforated edges. Pull out the dispensing spout.
2. Remove the cap from the spout.
3. Connect the QCD as shown to dispensing spout. Scholle fitting screws onto BIB.

Note: THE FITMENT MUST BE PUSHED ALL THE WAY OUT SO THAT THE WORD "OUT" IS EXPOSED ON THE TOP OF THE FITMENT.



OUT

4. Place the QCD into the neck of the dispensing spout at the ridge as shown on the illustration.



Cleaning Instructions

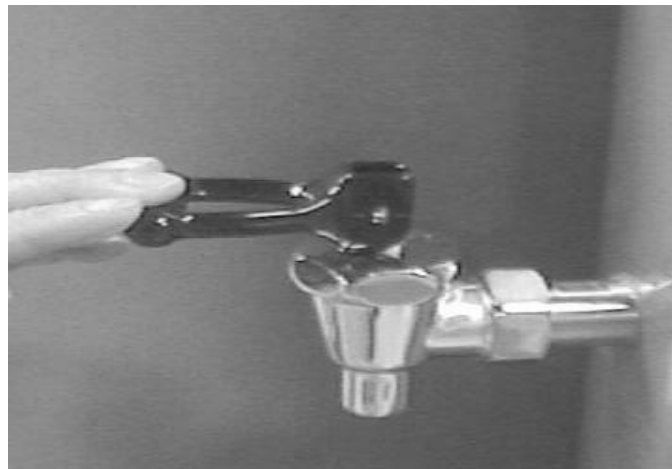
To clean and flush lines before connecting BIB product to unit or when changing product. Flush should be performed at least once a week.

Note:

Cleaning requires the use of a cleaning/flush adapter. An adapter may be purchased from Newco Enterprises, Inc. #320282 for QCD cleaning/flush adapter. #120508 for Scholle cleaning/flush adapter.

A cleaning adapter can be made by taking an empty BIB bag and cutting away as much of the empty bag as possible. Wash the remaining connector and further trim off any remaining bag pieces if desired. This is now your cleaning adapter. It will allow the check valve in the connector to stay open during the cleaning process. Cleaning adapters may be saved for later use.

1. Connect clean/flush adapter to QCD or Scholle connector.
2. Place connector with adapter in container of hot water.
3. Lock or hold faucet handle down until clear water runs from faucet.



4. Remove adapter from connector.
5. Attach connector to new BIB.

5. Press QCD towards the dispensing spout until it is flush with the collar of the QCD.



Flush Position

6. The BIB should lie horizontally
 - Avoid loops in the product line
 - Use the minimum amount of product line required.
 - Check for air bubbles in the product line to trouble shoot for priming.

PRIME SYSTEM

7. After the BIB has been connected to the QCD valve dispense approximately 12 ounces of product.
8. Dispense another 8 ounces of product and sample for taste. If an adjustment is necessary, refer to taste calibration section page #7

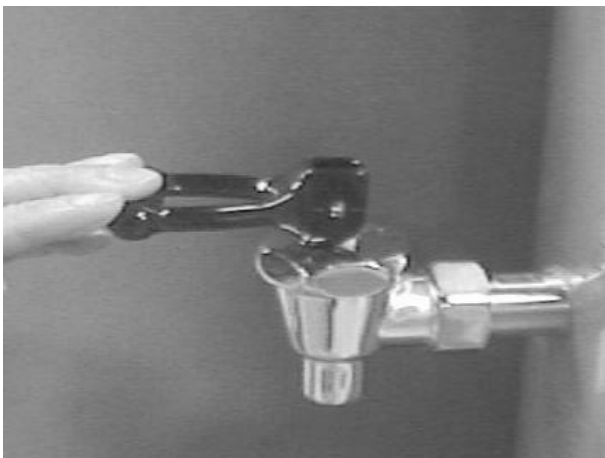
NOTE: Be sure there are no air bubbles in the product line.

Clean Dispenser and Faucet

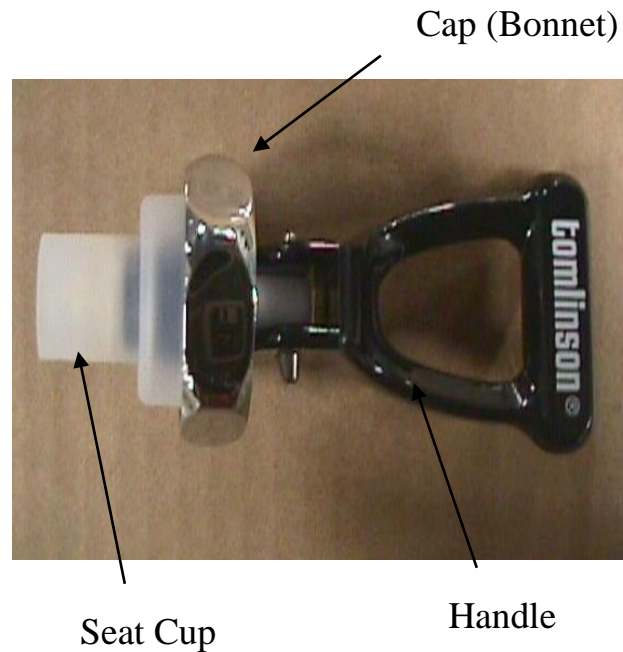
1. Turn off water source to dispenser



2. Open and close the faucet handle to relieve system of water.



3. Unscrew the faucet/handle cap assembly from the faucet.



4. Wipe inside of faucet body with a mild dishwashing soap and hot water.
5. Do the same to handle, cap, and seat cup.
6. Reinstall assembly to faucet body, taking care not to cross thread when installing. Finger tight is adequate.
7. Turn water source to on position.
8. Dispense approximately 12 ounces.

WEEKLY SANITIZING

The following procedure Applies To Each Dispenser Head
Bag in Box

1. Follow steps 1-3 of cleaning instructions on page #3
 2. Shut off water supply valve on the back of the dispenser.
 3. Open and close faucet handle to relieve system of water.
 4. Unscrew the faucet handle/cap assembly from faucet.
 5. Wash the faucet/cap/seat cup assembly in a mild dishwashing soap and warm water.
 6. Reinstall assembly to faucet body taking care not to cross thread when installing. Finger tight is adequate.
 7. Turn water supply on.
 8. Prepare one gallon of food grade sanitizing solution *(200 ppm available chlorine) in a suitable container per the sanitizer manufacturers instructions. Use 100° F water.
 9. Place BIB connector into the sanitizing solution. Ensure connector is submerged to bottom.
 10. Place a large vessel under the faucet. Lock or hold faucet open until container of sanitizing solution is empty. **DO NOT FLUSH UNTIL THE FOLLOWING MORNING**
 11. Flush by reloading the dispenser with concentrate. Lock or hold faucet handle down until the tea is dispensed from the faucet. Dispense three 8 oz. servings and discard.
- * Sanitizing solution with 200 ppm available chlorine can be made by adding ½ oz. (1 tablespoon) of regular household bleach(6% sodium hypochlorite solution) per gallon of water.

Do's and Don'ts

OPERATION

1. Do fully activate faucet handle when dispensing drinks.
2. Do clean & sanitize dispensing assembly weekly.
3. Do keep dispenser primed with concentrate at all times.
4. Do reload immediately when out of concentrate.
5. Do flush and clean lines regularly.
6. Don't forget to clean & sanitize faucet seat cup
7. Do follow all cleaning and sanitizing procedures, remove and store concentrate if urn will not be used for an extended period of time; ie: more than two days.

INSTALLATION

1. Do connect dispenser to a filtered waterline.
2. Do flush filters before connecting to dispenser.
3. Do sample finished drink before making adjustments.
4. Do make very slight drink adjustments then sample.
5. Don't forget to flush filters before installation.
6. Don't make any pressure regulator adjustments on urn. (Do NOT attempt to adjust the urn regulator. If a regulator adjustment is required call the factory at 1-800-556-3926. The adjustment should be made by a qualified service technician.)
7. Don't forget to get sample approval from customer.

PROBLEM	CAUSE	CORRECTIVE ACTION
Difficulty priming dispenser.	1. Product adjustment screw turned in too far.	1. Turn adjustment dial $\frac{1}{4}$ turn C'Clockwise(weaker/stronger)adjustment. 2. Regulator adjustment is required. Call the factory for assistance.
Pulled faucet handle, no product, no water.	1. Water supply not on.	1. Turn water supply on.
Drink too foamy or bubbly	1. Concentrate BIB empty. 2. Hole or tear in product tubing prior to BIB connection. 3. Loose syrup line connection.	1. Load new BIB 2. Replace tubing 3. Check syrup line connections from check valve.
Drink inconsistent	1. Waterline pressure dropping below machine's preset pressure regulator adjustment.	2. Regulator adjustment is required. Call the factory for assistance.
Water only—no product	1. Concentrate BIB empty. 2. Product hose clogged. 3. Product hose kinked. 4. Check valve not seating. 5. Adjustment screw in too far.	1. Load new BIB. 2. Clean product hose or replace. 3. Check for kinks. 4. Disassemble and clean check valve. 5. Turn adjustment screw out using adjustment dial.
Faucet dripping	1. Foreign particles on seat cup. 2. Damaged seat cup. 3. Pressure set too high.	1. Follow seat cup cleaning. 2. Replace seat cup. 3. Regulator adjustment is required. Call the factory for assistance.
Drink too weak	1. Adjustment screw in too far. 2. Check valve not seating.	1. Turn adjustment screw out Weaker/Stronger adjustment. 2. Disassemble and clean check valve.
Air bubbles in syrup	1. Loose tubing connection at QCD or at check valve barb. 2. Worn O-ring on QCD plunger. 3. Air in bag.	1. Ensure tubing is slid all the way on to the QCD and check valve barb. 2. Replace QCD. 3. Stand BIB upright, open faucet handle and prime syrup line until all air bubbles are gone.

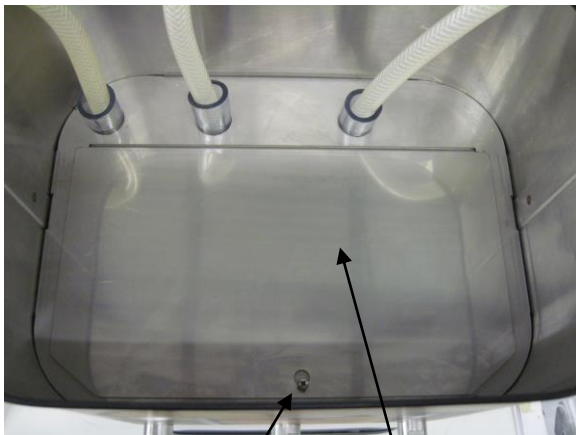
Taste Calibration For Postmix Beverage Dispenser With Low Pressure Faucet



Remove Top Cover.



Remove Product And
Hang Over Sides Of
Dispenser.



Loosen Screw, Slide Access Panel
Toward Front And Remove.



After Access Panel Is Removed
Adjustment Dials Are Accessible
From The Top Side.



Rotate Dial Counter Clockwise For Stronger Mixture Or Clockwise For Leaner Mixture. Make small adjustments(approximately 1 ½ points or 1/8 turn at a time)



After Adjustments Are Made Replace Access Panel & Tighten Screw

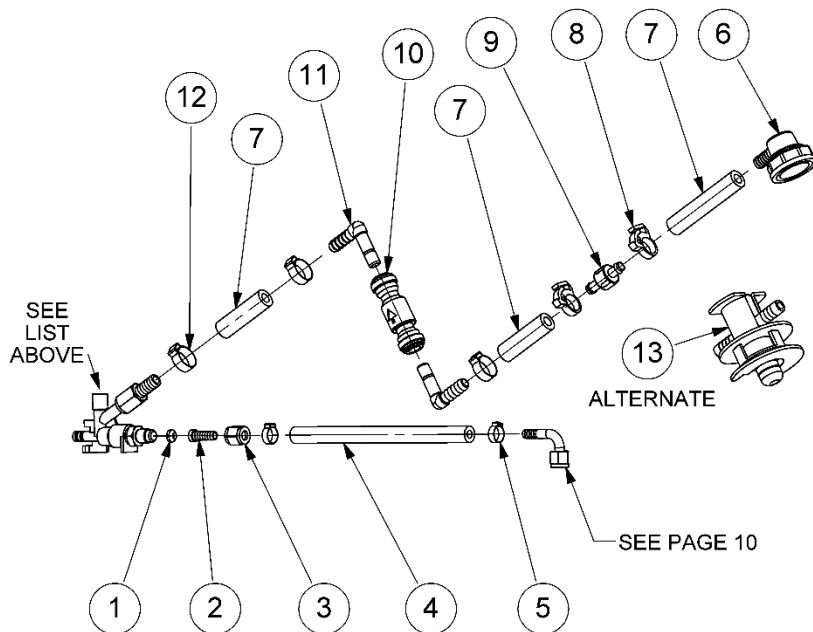
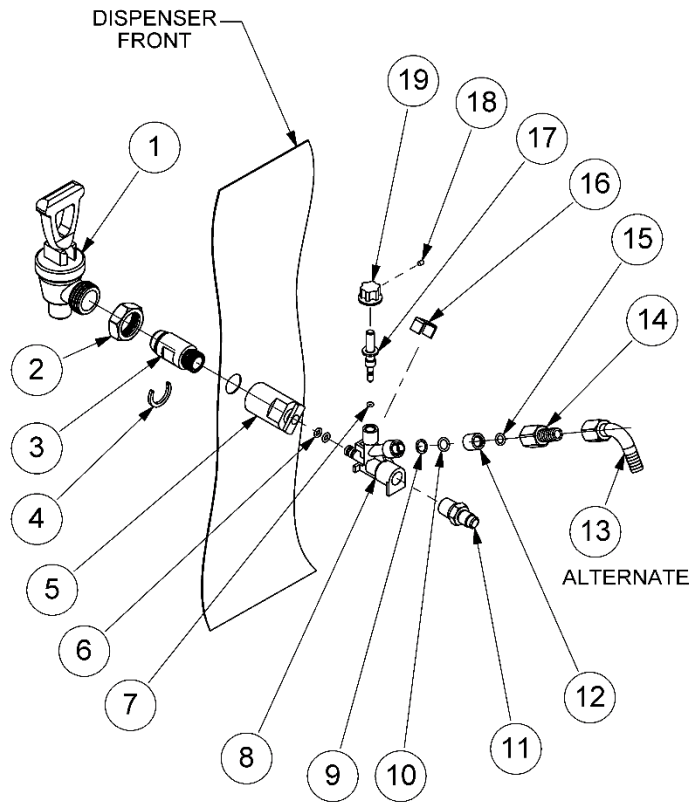


Replace Product And Syrup Lines.



Replace Top Cover.

REPLACEMENT PARTS LIST			
ITEM NO.	PART NUMBER	DESCRIPTION	QTY.
1	800460	FAUCET ASSEMBLY, BLACK,	1
2	104114	NUT, HIGH HEAT, FAUCET	1
3	15455	SHANK, FAUCET, .875, LONG, S.S.	1
4	800007	RING-C- TEA URN	1
5	5535	FAUCET ADAPTER, CELCON	1
6	706187	ORING, .176 ID X .070 WALL	2
7	2794	ORING, .070 ID X .070 WALL	1
8	803134	DISPENSE HEAD, POSTMIX	1
9	803203	WASHER, 5/16 ID X 7/16 OD X .015	1
10	706191	ORING, .301 ID X .070 WALL	1
11	201104-SS	CONNECTOR, 1/4 FLARE X 1/4NPTM, SS	1
12	400136	SLEEVE, CHECK VALVE	1
13	400011	BODY, CHK VLVE, ELBOW, 3/8 BARB	1
14	5504	BODY, CHECK VALVE, 3/8 BARB	1
15	400135	ORING, .239 ID X .070 WALL	1
16	803150	CLIP, LOCKING	1
17	803057	ADJUSTMENT SCREW	1
18	803200	SETSCREW, 3MM X 5MM	1
19	803118	DIAL, .75 DIA., X 7/16	1

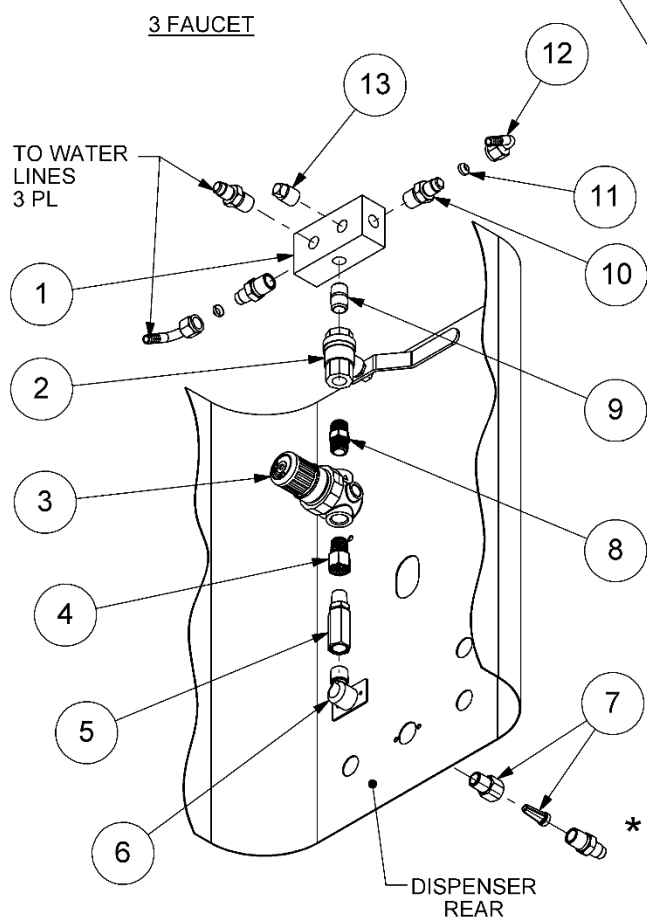
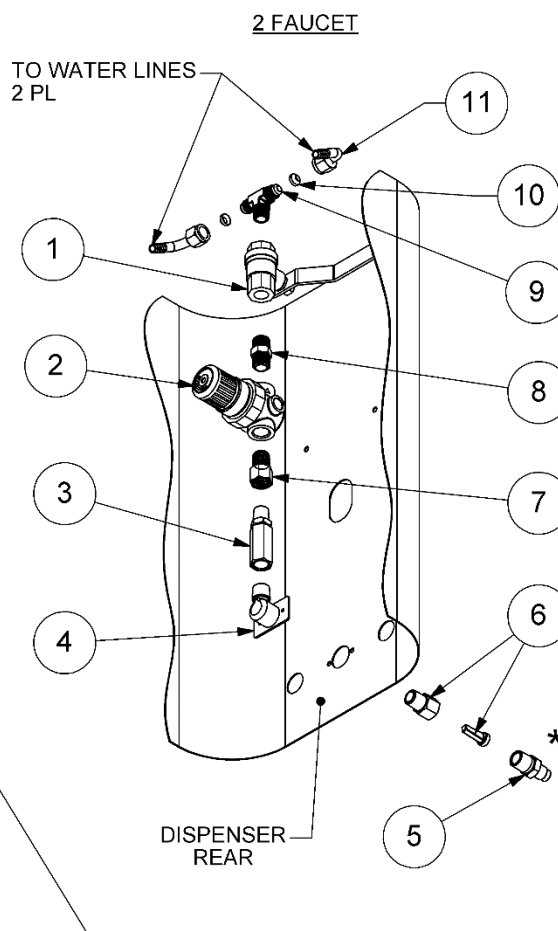


REPLACEMENT PARTS LIST			
ITEM NO.	PART NUMBER	DESCRIPTION	QTY
1	103513	WASHER, 1/4 FLARE, NYLON	1
2	4362	FITTING, BARB, STEM, 1/4 X 1/4 FLARE	1
3	4361	NUT, 1/4 FLARE, SWIVEL	1
4	803131	HOSE, BRAIDED, .250 ID X .520 OD	*
5	119835	CLAMP, STEPLESS, .520/.618	2
6	107117	CONNECTOR, SCHOLLE, 1910L	1
7	803089	HOSE, BRAIDED, .313 ID X .592 OD	*
8	120684	CLAMP, SNP8	2
9	400128	CHECK VALVE, CLEAR	1
10	703037	CHECK VALVE, 3/8", JOHN GUEST	1
11	107325	ELBOW, UNION, 3/8 TUBE, 3/8 STEM	2
12	803187	CLAMP, STEPLESS, .609/.734	3
13	400137	CONNECTOR & FITMENT, QCD2	1

* ORDER HOSE IN INCHES AS REQUIRED

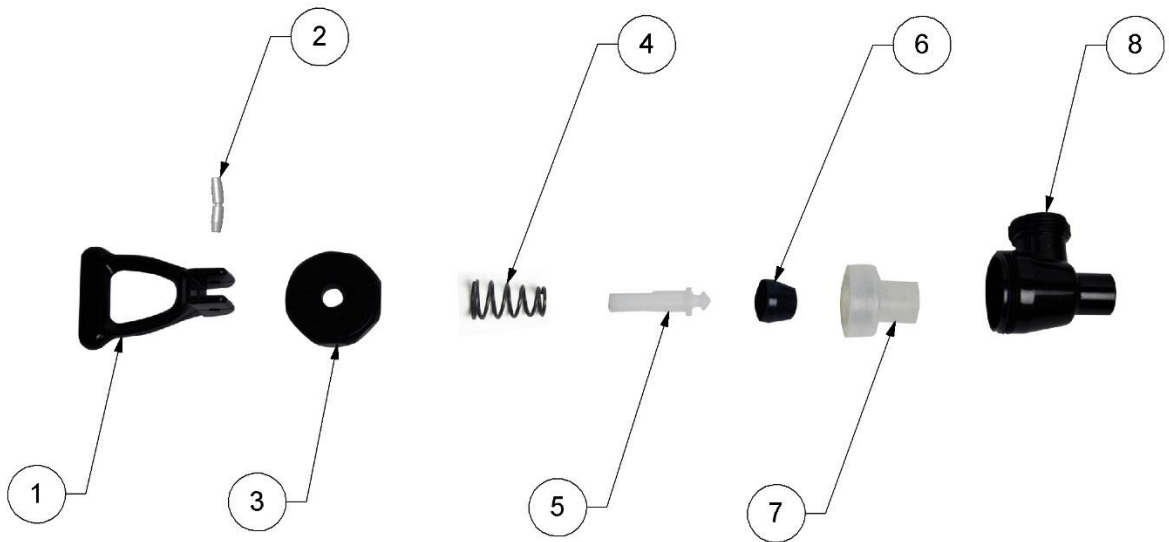
REPLACEMENT PARTS LIST (2 FAUCET)			
ITEM NO.	PART NUMBER	DESCRIPTION	QTY.
1	6220	VALVE, SHUTOFF, BALL	1
2	706020	REGULATOR, PRESSURE, 50 PSI	1
3	6211	CHECK, VALVE, 1/4 MNPT X 1/4 FNPT	1
4	6214	PLATE & FITTING ASSY.	1
5	201104-SS	CONNECTOR, 1/4 FLARE X 1/4 NPTM, SS	1
6	7641	WATER INLET SCREEN ASSY.	1
7	803195	FITTING, 1/4 NPT F X 1/4 NPT M	1
8	3311	NIPPLE, HEX, 1/4 NPT X 1/4 NPT	1
9	107104	STREET TEE, 1/4 F X 1/4 F X 1/4 NPT	1
10	103513	WASHER, 1/4 FLARE, NYLON	2
11	803254	ELBOW, HOSE, SWIVEL, 1/4", S.S.	2

*
Alternate Inlet Fittings For 2 & 3 Faucet Units:
 100351 CONNECTOR, MALE, 3/8 FLARE, 1/4 NPT
 706054 FITTING, 3/8 BARB, 1/4 NPT



REPLACEMENT PARTS LIST(3 FAUCET)			
ITEM NO.	PART NUMBER	DESCRIPTION	QTY.
1	14509	BLOCK, MANIFOLD	1
2	6220	VALVE, SHUTOFF, BALL	1
3	706020	REGULATOR, PRESSURE, 50 PSI	1
4	803195	FITTING, 1/4 NPT F X 1/4 NPT M	1
5	6211	CHECK, VALVE, 1/4 MNPT X 1/4 FNPT	1
6	6214	PLATE & FITTING ASSY.	1
7	7641	WATER INLET SCREEN ASSY.	1
8	3311	NIPPLE, HEX, 1/4 NPT X 1/4 NPT	1
9	700014	NIPPLE, CLOSE, 1/4 NPT	1
10	201104-SS	CONNECTOR, 1/4 FLARE X 1/4 NPTM, SS	4
11	103513	WASHER, 1/4 FLARE, NYLON	2
12	803254	ELBOW, HOSE, SWIVEL, 1/4", S.S.	2
13	4841	PLUG, HEX, 1/4 NPT	1

REPLACEMENT PARTS (FAUCET #800460)			
ITEM NO.	PART NUMBER	DESCRIPTION	QTY
1		HANDLE	1
2	120571	HANDLE PIN	1
3		BONNET	1
4		SPRING	1
5		PLUNGER	1
6		SPRING COVER	1
7	800013	SEAT CUP	1
8		FAUCET BODY	1

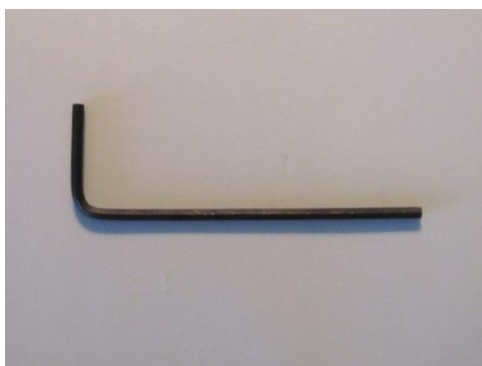


Additional Parts:

14410 Black Plastic Cover, Small
803197 Drip Tray, S.S. Grid

DIAL REMOVAL

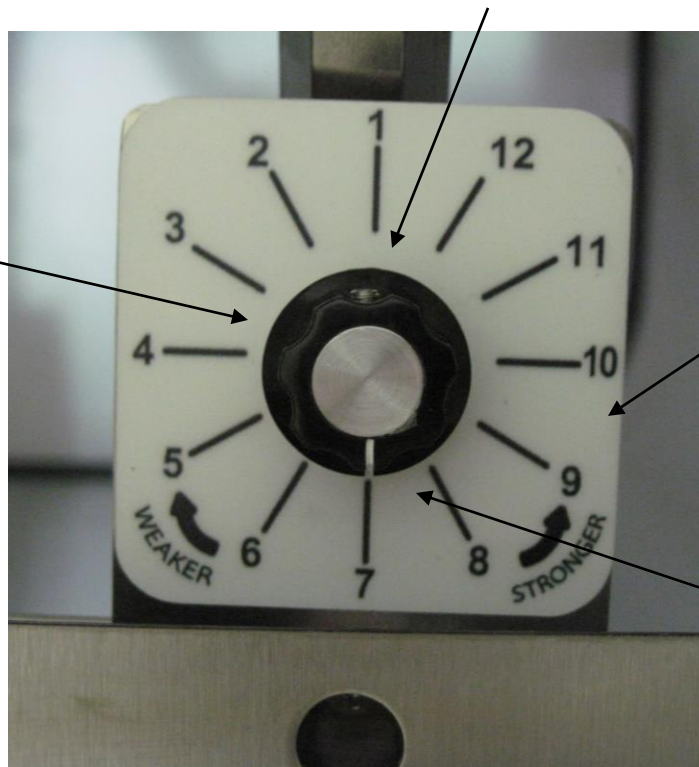
Use 1.5mm hex wrench to remove dial knob. This wrench is supplied with the unit. **IMPORTANT:** When removing the dial knob note the position of the white indicator on the knob. Remove the dial plate after the dial knob is removed. This area is now open for cleaning and troubleshooting.



1.5 mm Hex Wrench #803201

3mm x 5mm Setscrew #803200

Dial Knob #803118



Dial
Plate

White
Indicator

When reassembling dial knob to shaft be sure that the white indicator is in the same position as before. If factory orientation is lost turn the bare dial knob shaft clockwise until it stops and position the dial as shown above. Tighten setscrew.