

# OPERATION MANUAL

## FLAVOR SHOT MACHINE

### COLD DRINKS



Dim's 10.8" Wide x 13.3" Deep x 16" Tall

120 VAC .75 A Weight 16 LBS

OPERATING CURRENT-24 VDC 1.0 A



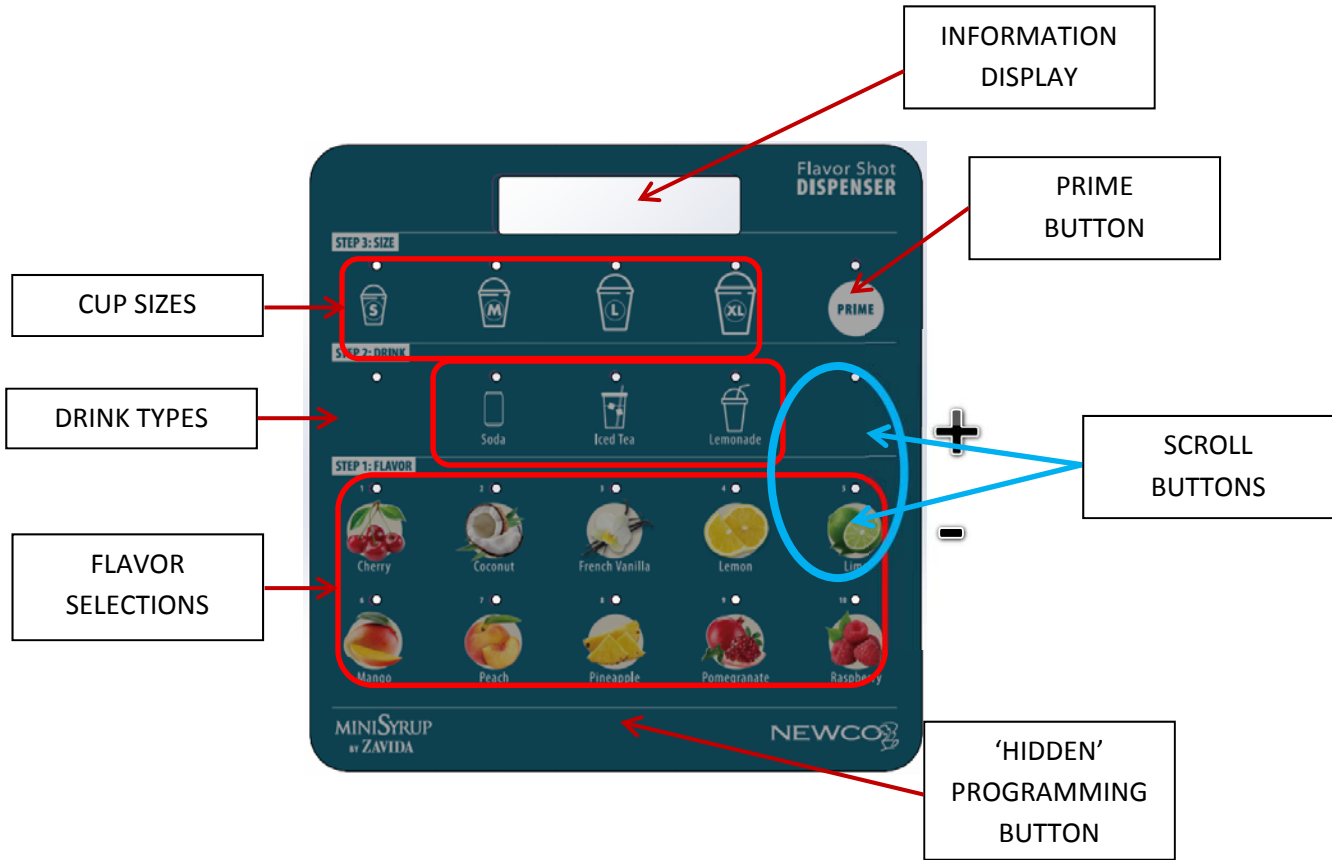


3650 NEW TOWN BLVD. ST. CHARLES MO 63301 WWW.HIDDENCOFFEE.COM 1.800.325.7867

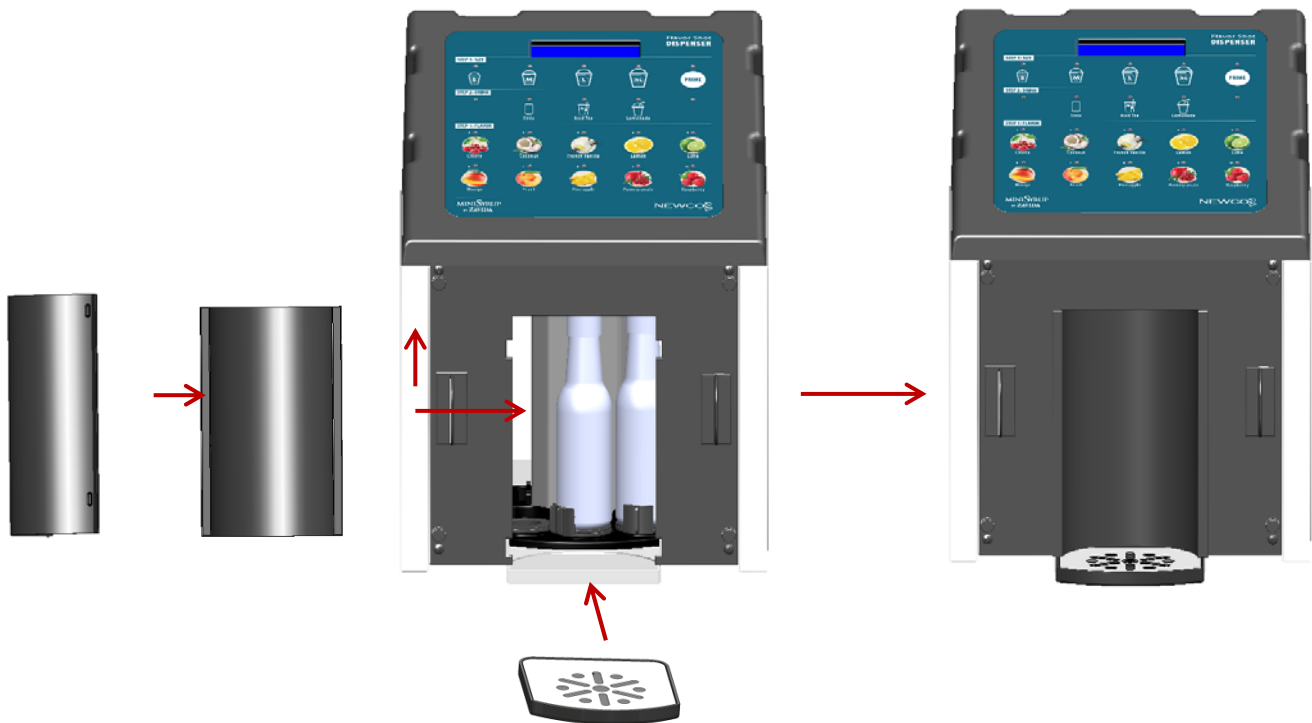
## Contents

Machine Functions.....	3
Bottle Access.....	3
Machine Setup .....	4
Priming bottles for use.....	5
Machine Operation .....	5
Changing Flavor bottles .....	6
Programming Mode.....	6
Programming Mode Cont'd. ....	7
Programming Mode Cont'd. ....	8
Wiring Diagram .....	8
Parts Illustration.....	9

## Machine Functions



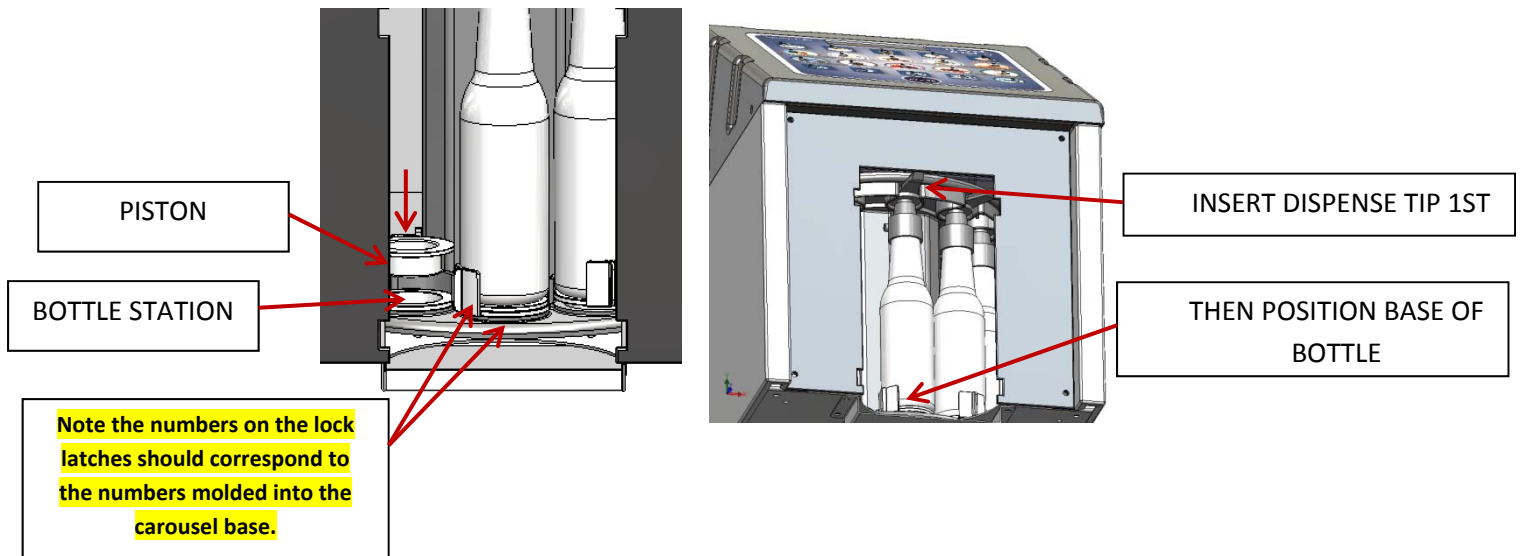
## Bottle Access



## Machine Setup

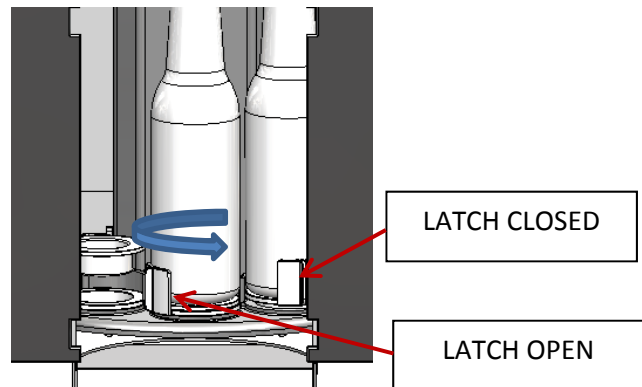
**NOTE: THE MACHINE MUST BE POWERED ON BEFORE INSTALLING PISTONS AND BOTTLE LATCHES TO ENSURE CAROUSEL ROTATES TO CORRECT POSITION**

Place the push pistons into the 10 bottle stations, rotating the carousel by hand



Place the Flavor Bottles in the bottle station corresponding to the Flavor number—insert dispense tip of bottle into upper station—slide bottle into holder.

Rotate lock latch to front (closed) position



The default Flavor Numbers are:

1. Cherry--
2. Coconut--
3. French Vanilla --
4. Lemon --
5. Lime--
6. Mango --
7. Peach--
8. Pineapple--
9. Pomegranate--
10. Raspberry

Plug the wall adapter outlet into the receptacle at the rear left corner of the unit

Plug the power adapter into a wall outlet. The LCD readout should display :

**Ready—Make Selection**

*Note that all the flavors are lit indicating empty bottle condition.*

## Priming bottles for use

1. Press and hold the button corresponding to the flavor to be primed until the carousel rotates to the pumping station. The Flavor Button will now have a steady light and the Prime button will be blinking.
2. Place a cup in the dispense area and press the blinking Prime button. The bottle will be pumped 11 times to Prime
3. Repeat for all 10 bottle stations

Insert the bottle access panel and place the drip tray in position



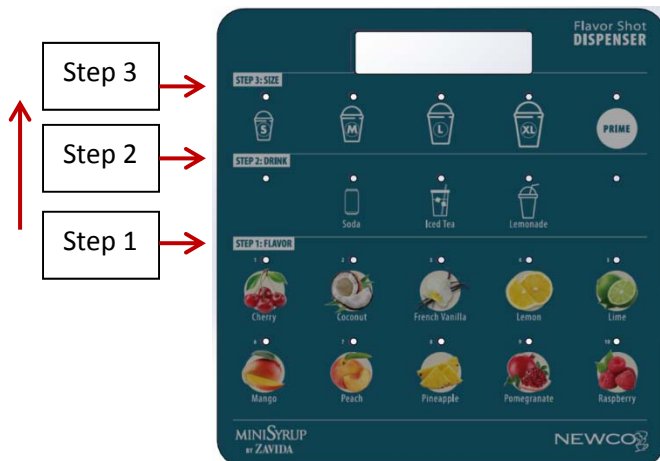
## Machine Operation

Place cup in dispense area

1. Select Flavor

2. Select Drink type

3. Drink will dispense when cup size is selected



## Changing Flavor bottles

When the Flavor is nearly empty a blinking light indicates that the bottle should be removed and replaced with a fresh bottle. When empty, the light will turn solid.

To replace and refresh the bottle:

1. Remove the Drip Tray from the machine. Remove the bottle access panel.
2. Press and hold the button corresponding to the flavor to be primed until the carousel rotates to the pumping station. The Flavor Button will now have a steady light and the Prime button will be blinking.
3. Slide the bottle latch clockwise to allow the bottle to be removed.
4. Remove and replace the empty Flavor bottle with a full bottle.
5. Place a cup in the dispense area
6. Press the prime button to prime the bottle
7. Replace the bottle access panel
8. Replace the drip tray

## Programming Mode

### Entering Programming Mode

Hold down the 'Hidden' Button for 5 seconds until the display reads "Programming Mode".



### Editing the Drink Type:

1. Press a Drink Type Button-Button will light and display will display the drink type assigned to the button.
2. Use the + or – buttons to scroll through any of the 16 drink types. Pressing the "Hidden" programming button will assign the drink type name on the display to the button. Pressing the "Hidden" programming button again at this point will exit drink type and save the selection, otherwise pressing the + or – buttons will allow a strength adjustment from .25 to 2.00 with 2.00 being 200% stroke volume ratio. Pressing the 'Hidden' button at this point will store the new percentage to that button.
3. Hold the 'Hidden' button for 5 seconds to exit Programming Mode.



## Programming Mode Cont'd.

### Editing the Flavor



1. Press and hold the 'Hidden' button for 5 seconds---Display will change to "Programming Mode". Press a Flavor Type Button-Button will light and display will display the drink flavor number (1-10) assigned to the button.
2. Scrolling with the + or – buttons will allow an "hours for decay" adjustment from 24 to 72 hrs. This value determines the time allowed to add another pump to compensate for hourly loss of volume or "decay".
3. Pressing the 'Hidden' button will change the display to "Pumps/Ounce". Scrolling with the + or – buttons will allow a "Pumps/Ounce" adjustment from .10 to 2.00 pumps per ounce of beverage. This value determines the # of pumps when a cup size button is depressed. Thus the Pumps/Ounce value will be multiplied by the value assigned to the "Cup Size" buttons. (The values of the drink type button will also affect the total pumps dispensed.)
4. Pressing the 'Hidden' button a second time will change the display to "Volume Rem". This is an informational value that displays the remaining liquid in the bottle station.
5. Pressing the 'Hidden' button a third time will change the display to "Hours /Change". This is an informational value that displays the time elapsed since the last priming sequence in the bottle station.
6. Pressing the 'Hidden' button a fourth time will change the display to "Total Vends". This is an informational value that displays the total number of cycles for the bottle station for lifetime count, non-resettable.
7. Press the 'Hidden' Button to exit Flavor Type Mode. Hold for 5 seconds to exit Programming Mode.

### Editing the Cup Sizes:

1. Press and hold the 'Hidden' button for 5 seconds---Display will change to "Programming Mode". Press a Cup Size Button-Display will display the ounce value assigned to the button.
2. Use the scroll buttons to adjust the cup size from 2.0 to 36.0 ounces.
3. Use the 'Hidden' button to store the value. Hold down the 'Hidden' Button for 5 seconds to exit Programming Mode.



## Programming Mode Cont'd.

### Factory Reset:

1. Hold down the 'Prime' button for 5 seconds while in Programming Mode—the machine will reset these default values:

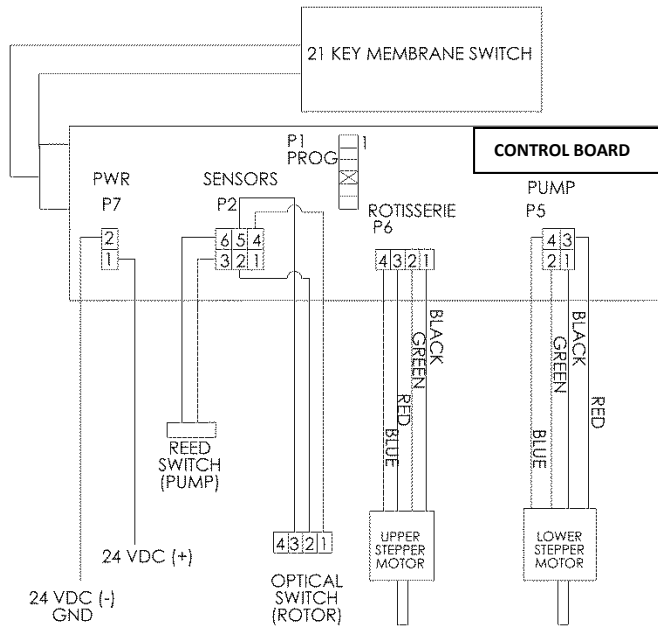
Cup sizes are set to—Small (12 oz), Med (16 oz), Large (20 oz) and X-Large (24 oz)

Flavors are set to—.25 Pumps / Ounce

Beverage Types are set to—Soda, Iced Tea, Lemonade, Default value of 1.00 for all.

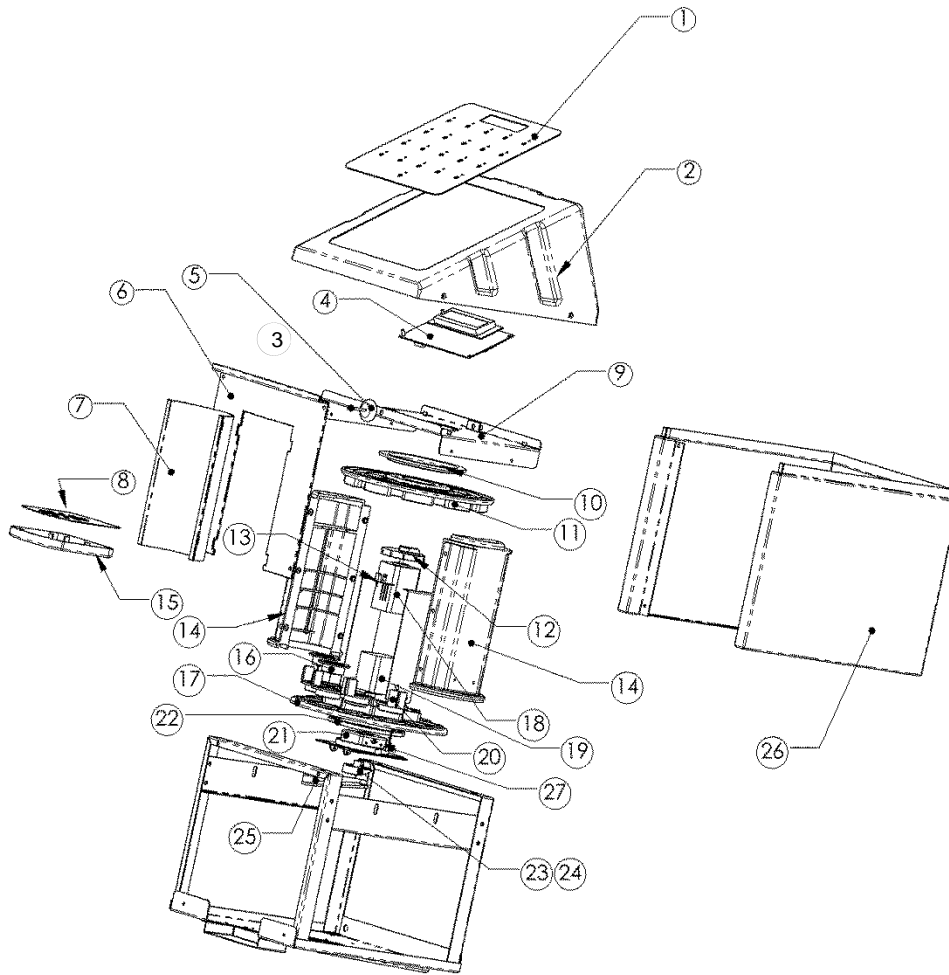
Hold down the 'Hidden' Button for 5 seconds to exit.

## Wiring Diagram



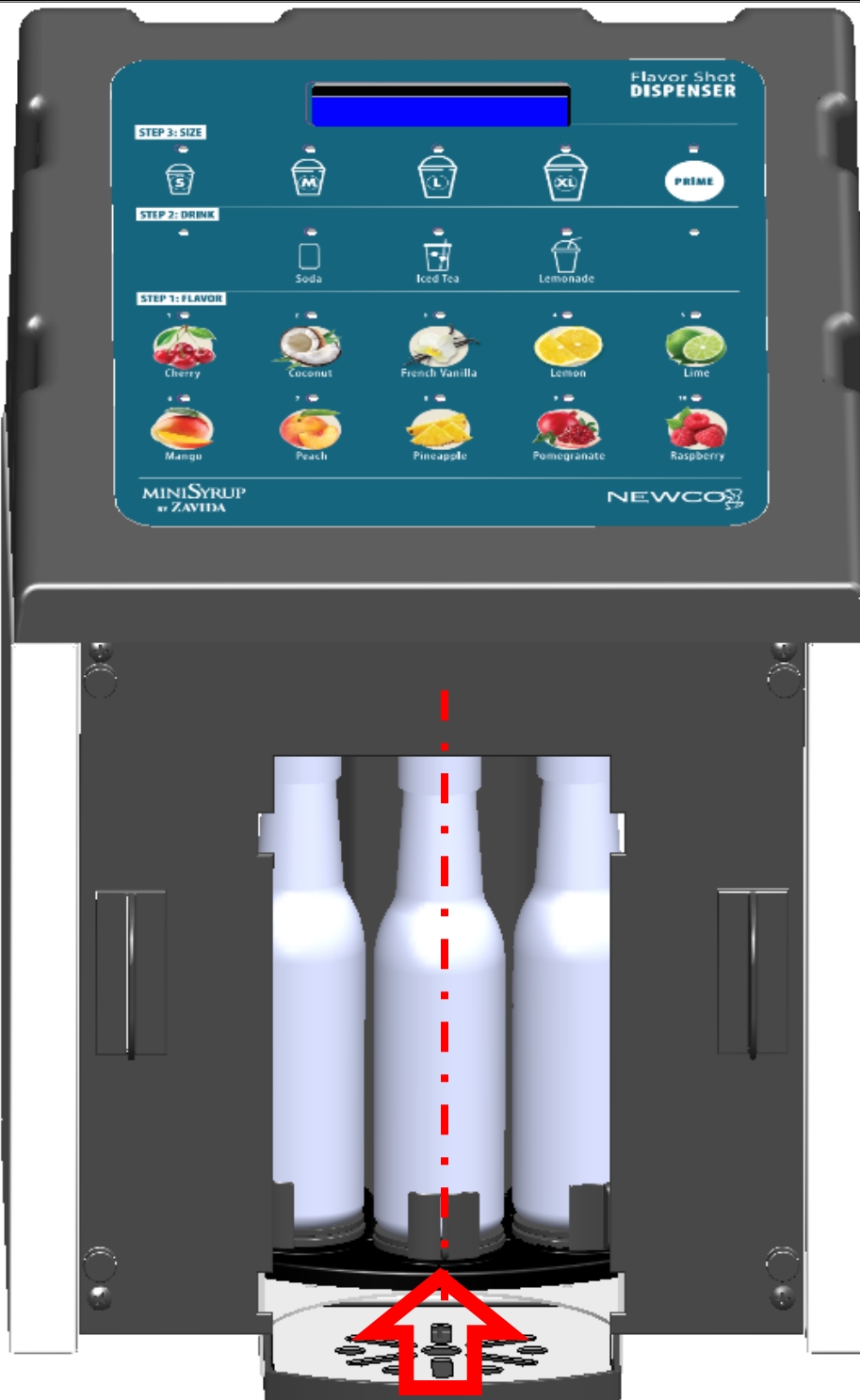


## Parts Illustration



1	451602(HOT) 451651(COLD)	SWITCH, MEMBRANE, FLAV SHOT	1	EA
2	451626	TOP COVER PANEL, FLVR DISP	1	EA
3	451601(COLD)	BOARD, CONTROL, FLAVOR DISP	1	EA
4	451663 (HOT)			
5	451635	THRUST WHEEL, FLVR DISP	2	EA
6	451637	FRONT FASCIA, FLVR DISP	1	EA
7	451638	DOOR, FLVR DISP	1	EA
8	451640	PLATE, CUP REST, FLVR DISP	1	EA
9	451632	GANTRY PANEL, FLVR DISP	1	EA
10	451624	TOP COLLAR GUIDE, FLV DISP	1	EA
11	451604	GUIDE, BOTTLE, FLAVOR DISP	1	EA
12	451610	DRIVE HUB, FLVR DISP	1	EA
13	451618	BRD, POSITN SENSOR FLV DIS	1	EA
14	451605	CAROUSEL, HOUSNG FLVR DISP	2	EA
15	451641	DRIP TRAY, FLVR DISP	1	EA
16	451608	LIFTER, BOTTLE FLVR DISP	10	EA
17	451606	CAROUSEL BASE FLVR DISP	1	EA
18	451617	MOTOR STEPPER, FLVR DISP UPPER	1	EA
19	451617	MOTOR STEPPER, FLAVR DISP LOWER	1	EA
20	451607	BOTTLE TRAP FLVR DISP	10	EA
21	451611	BOTTOM BEARING, FLVR DISP	1	EA
22	451621	BEARING, 3" THRUST FLVR DIS	1	EA
23	451612	PUMP CAM, FLVR DISP	1	EA
24	451613	CAM MAGNET, FLVR DISP	1	EA
25	451622	PLANK, SEE SAW, FLVR DISP	1	EA
26	451636	WRAPPER, CABINET, FLVR DISP	1	EA
27	773043	MAGNET SENSOR, HOUS, POD	1	EA

# IMPORTANT NOTE



**NOTE: BOTTLE STATION MUST BE IN DISPENSING POSITION AS SHOWN WHEN MACHINE IS POWERED ON.**

**IF CLICKING SOUND / VIBRATION OCCURS DURING POWER UP OR DUE TO POWER FAILURE MANUALLY NUDGE STATION INTO DISPENSING POSITION. MACHINE WILL THEN REHOME AND REPOSITION.**