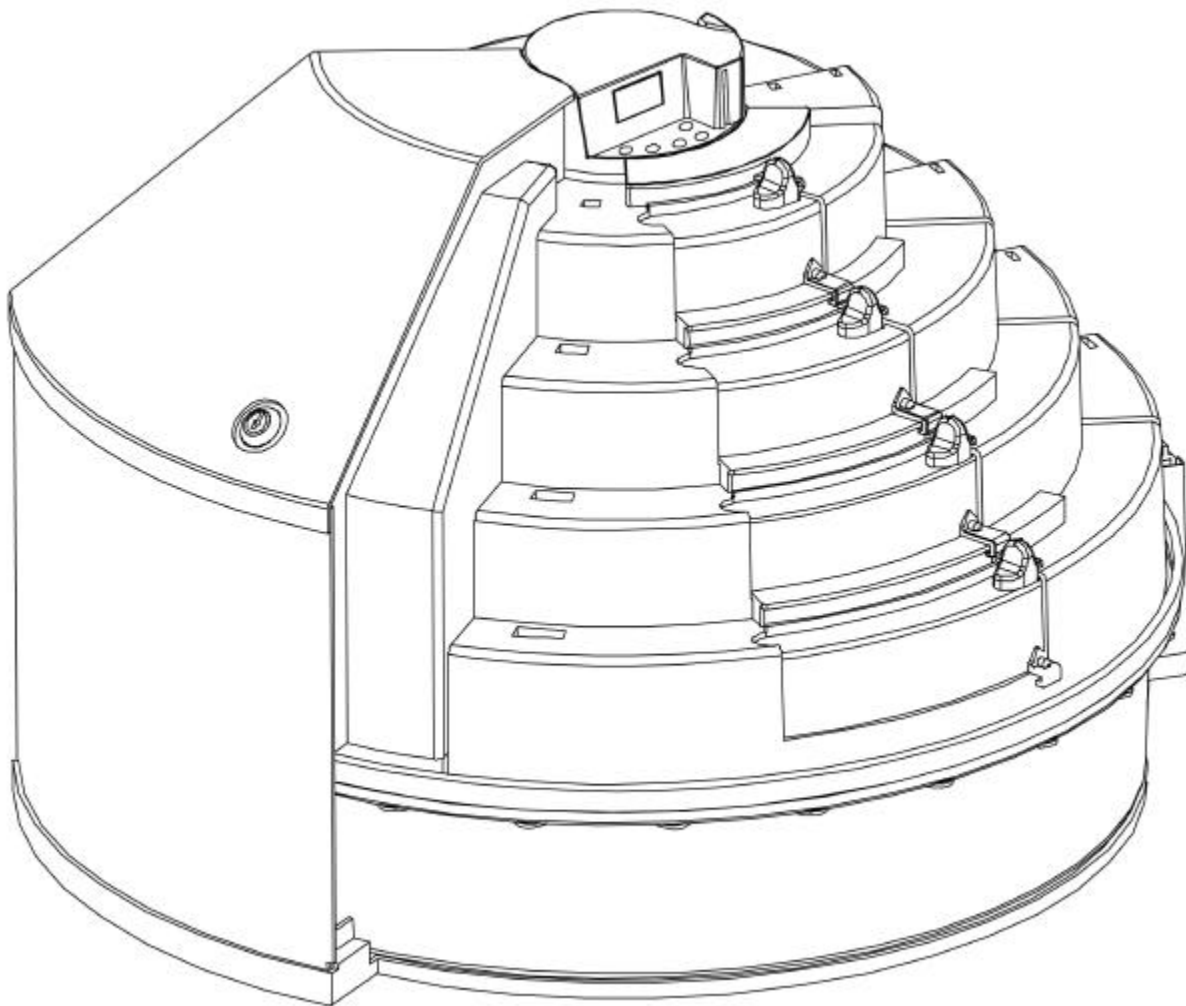


## Installation, Operation, Replacement Parts and Service Manual



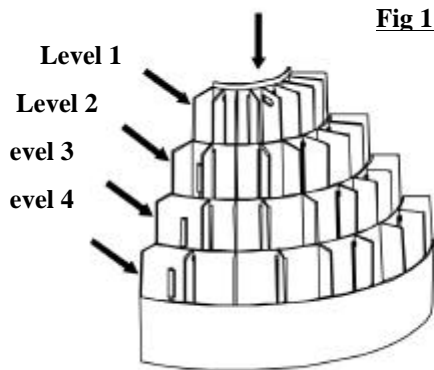
## Table of Contents

Product Compartment Loading .....	3
Installation .....	4
Operation .....	5
Removal of Major Components .....	6
Disassembly of Major Components .....	8
-Front Cover .....	8
-Product Trays .....	9
-Control Heart .....	9
-Back Cover .....	11
-Locking Cover .....	11
-Carousel .....	12
-Base .....	12
Exploded Views .....	13
-Control Box .....	13
-Coin Box .....	15
-Back Shell .....	17
-Lock Cover .....	19
-Door .....	21
-Tray .....	23
-Carousel .....	25
-Base .....	27
Specifications .....	28

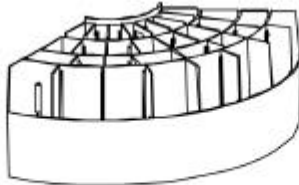


## Product Compartment Loading

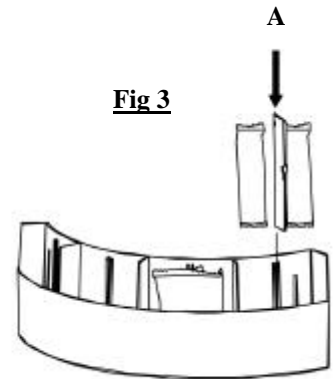
1. Product compartment segments are designed in 1/3 pie segments for easy removal from the Vendor. These compartments telescope up after they are installed in the Vendor \*See **Figure 1**. Once removed from the Vendor the compartments collapse to the same level to allow for ease of loading \*See **Figure 2**. The product compartments are designed with individual bin dividers to allow larger products fit into the product compartments, price is the same per product regardless if a bin divider ("A") is used or not B \*See **Figure 3**. This allows flexibility when stocking the machine.



**Fig 1**



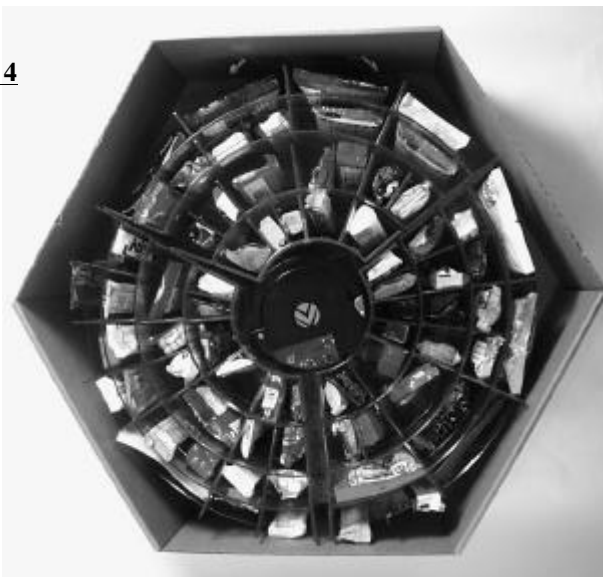
**Fig 2**



**Fig 3**

2. Product Compartments and coinbox are designed to fit into the cargo box, \*See **Figure 4**.

**Fig 4**





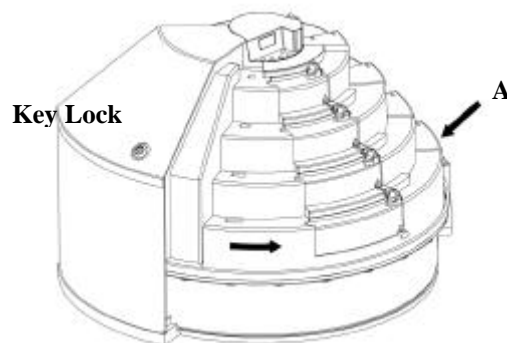
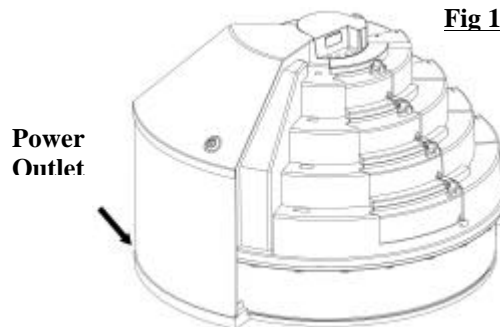
## Installation

1. Place Vista Vend on a sturdy, level, flat, surface.
2. Plug the AC to DC Adaptor into a 120-volt AC receptacle.
3. Plug the AC to DC Adaptor power cord into the Vista Vend's receptacle located on the back of the lower left side. **\*See Figure 1**

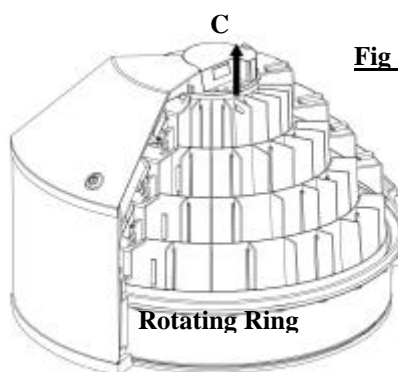
## Operation : Cash Box Removal

1. Unlock the front cover by inserting the key into the lock and rotating it 1/4<sup>th</sup> turn clockwise.
2. Remove the front cover by pressing in on the lower right corner of the cover ("A"). Rotate until cover has proper clearance for removal. Lift the front cover from the vendor and set it aside. **\*See Figure 2** \*Note that the front cover can be stored by setting it on the back cover during route servicing.
3. Rotate the carousel by grasping the blue rotation ring of the carousel and rotating it until one of the three 120-degree segments of trays is centered in the service opening.
4. Grasp the horizontal slot ("C") in the center of the top tray and lift the segment out of the vendor. Set the segment of trays on a flat surface and telescope all four trays down to one level. **\*See Figure 3**
5. Remove the coin box by rotating the coin box counter-clockwise and aligning the "Remove-Install" arrow on the coin box with the reference arrow below. Pull the coin box out horizontally and set it aside. **\*See Figure 4**

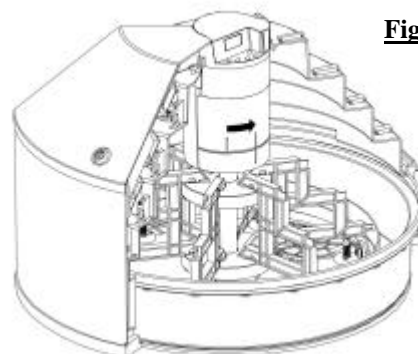
**Fig 1**



**Fig 3**



**Fig 4**



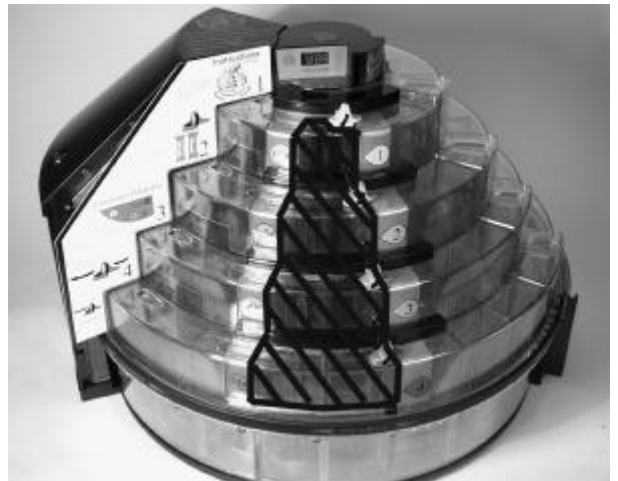


6. Reinstall the coin box by aligning the “Remove-Install” arrow with the reference arrow on the bottom of the coin box support. Rotate the coinbox clockwise until the “operate arrow” is lined up with the reference arrow below.
7. Reinstall the 120-degree tray segment by grasping the horizontal slot in the center of the smallest tray and lifting it to telescope the segment of trays up. Reinsert the tray segment into the vendor. Make sure each of the four trays in the 120-degree segment are at the same height as the trays on the right side and on the left side. If the trays are not the same height, the tray is not properly seated, and the vendor will not operate.
8. Reinstall the front cover by placing it over the service opening and rotating the cover to the left until it stops.
9. Turn the key counter clockwise  $\frac{1}{4}$  turn to lock.

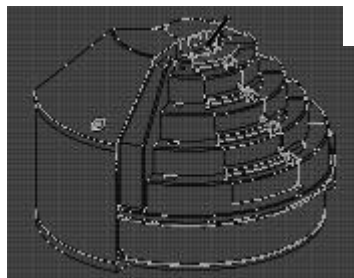
## **Operation : Product Purchase**

1. To purchase a product from the Vista Vend, rotate the carousel clockwise or counter-clockwise by grasping the carousel rotating ring and select a product to purchase. The product you wish to purchase should be in the “Vend Zone” \*See **Figure 5**
2. Align the right side of the compartment containing the desired product with the right side of the door opening. \*See **Figure 6**
3. Refer to the price posted on the tray level containing the desired product.
4. Deposit coins in the coin box until enough credit has been accumulated on the coin box display to purchase the desired product.
5. Push the colored, numbered (1,2,3,4) button on the coin box that corresponds to the color of the door handle located above the product to be purchased. \*See **Figure 7**

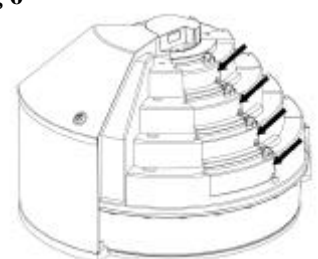
**Fig 5**



**Fig 7**



**Fig 6**



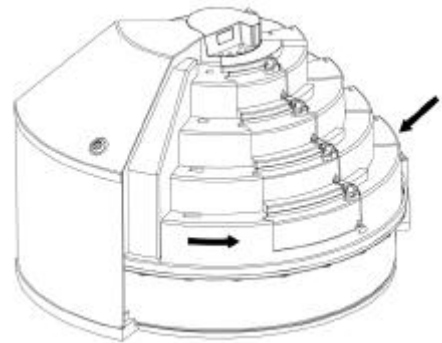


6. Grasp the door handle of the same color as the button that was pushed and move the door to the left until the door stops.
7. Reach in and retrieve the product.
8. After removing the product, close the door by moving the door all the way back to the right.

## **Removal of Major Components**

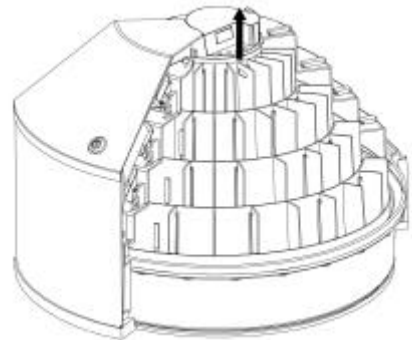
1. Unlock the front cover by inserting the key into the lock and rotating it 1/4<sup>th</sup> turn clockwise.
2. Remove the front cover by pressing in on the lower right corner of the cover has proper clearance for removal. Lift the front cover from the vendor and set it aside. **\*See Figure 7**  
**\*Note that the front cover can be stored by setting it on the back cover during route servicing.**

**Fig 7**



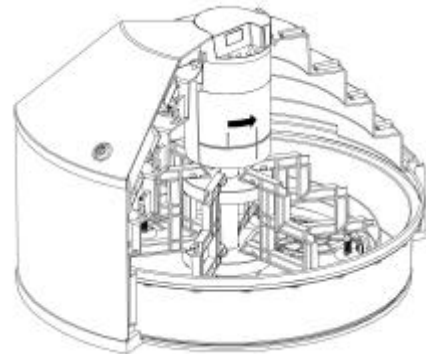
3. Rotate the carousel by grasping the rotation ring of the carousel and rotating it until one of the three 120-degree segments of trays is centered in the service opening.
4. Grasp the horizontal slot in the center of the top tray and lift the segment out of the vendor. Set the segment of trays on a flat surface and telescope all four trays down to one level. **\*See Figure 8**

**Fig 8**



5. Remove the coin box by rotating the coin box counter-clockwise and aligning the “Remove-Install” arrow on the coin box with the reference arrow below. Pull the coin box out horizontally and set it aside. **\*See Figure 9**

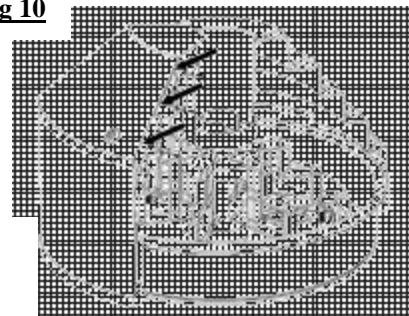
**Fig 9**



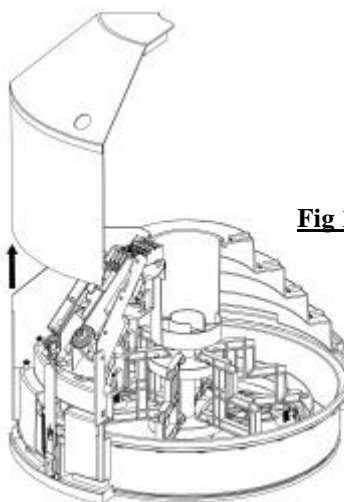


6. Remove the 3 screws on the left side of the service opening that secures the locking cover assembly. **\*See Figure 10**
7. Remove the locking cover assembly by lifting it vertically. **\*See Figure 11**
8. Grasp the back-up slide arm (gray color) and push up until the lock member arm (gray color) can be separated from the back-up connect blocks (gray color). **\*See Figure 12**
9. Remove the 4 screws on the left side and the 5 screws on the right side of the control heart assembly. **\*See Figure 13**
10. Push in at the bottom of the right side of the control heart assembly and snap the control assembly off the back cover.
11. To remove the back cover, remove the screw located below the coin box support at the top of the steel tube. Remove the 2 screws at the bottom left side of the back cover and rotate the back cover counter-clockwise until the tabs along the bottom perimeter of the cover are clear of the tabs on the base. **\*See Figure 14**
12. Grasp the back cover on the top with the right hand and spread the lower left side of the cover out with the left hand. Lift the back cover from the base.
13. To remove the carousel, retract each detent wheel (dark purple color) slightly and lift the carousel enough above the detent wheel, so the detent wheel can move under the carousel and release the spring tension.
14. After both detent wheels are released under the carousel, lift the carousel off the base. Remove the thrust washer located on the steel tube under the carousel.

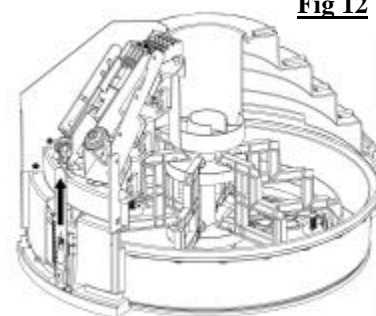
**Fig 10**



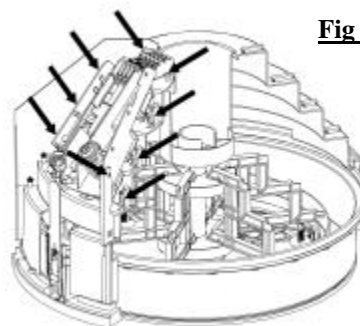
**Fig 11**



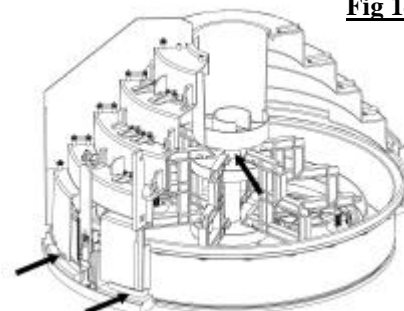
**Fig 12**



**Fig 13**

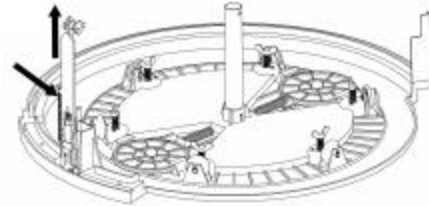


**Fig 14**



15. Remove the detent wheels from the base by sliding the wheels out from the center until they clear the retaining tabs of the base. Lift out the detent wheel, the spring applicator (dark purple color), and the spring.

**Fig 15**



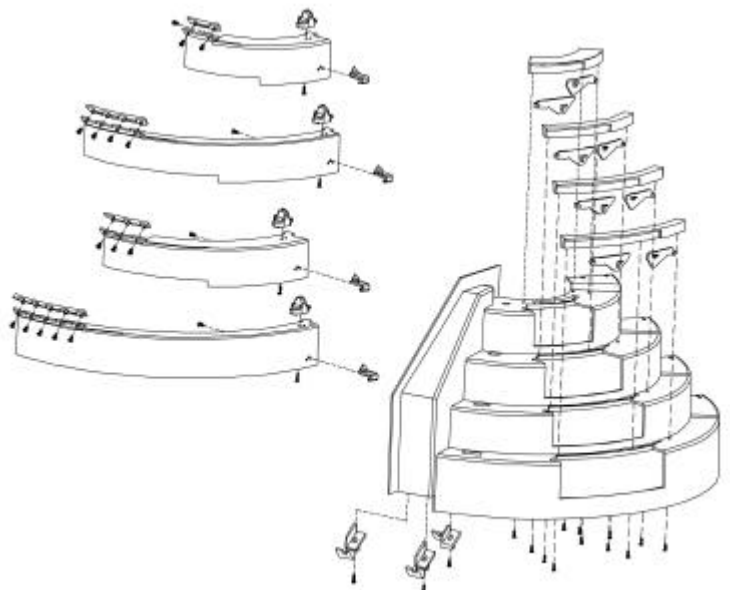
16. To remove the lock member arm (gray color) and the lock member latch (gray color), remove spring and then lift them vertically from the base. \* **See Figure 15**

17. Remove the lock member rocker (gray color) by rotating the lock member rocker to the left until it snaps out of the retaining bosses on the base. Remove the rocker spring from the base.

## Disassembly of Major Components

### FRONT COVER:

1. Remove the door brackets B or C from each door by removing the screw on the back of the door bracket.
2. Remove the door handles by removing the screw on the underside of the handle.
3. Remove the doors by sliding them to the left and out of the front cover.
4. Remove the door vanes from the door by removing the mounting screws.
5. Remove all 4 lever covers from the front cover by removing the screws underneath the lever covers.
6. Remove all 8 door levers. Note: Lever “L” is used on all 4 levels on the left side of the front cover, and “R-1” is used on levels 1, 2, & 3 on the right side of the cover. “R-2” is used on level 4 on the right side of the front cover.
7. Remove the 3 front cover latches located on the left side of the front cover by removing the mounting screws from the back of the latches.
8. To reassemble the front cover, perform the above steps in reverse order.



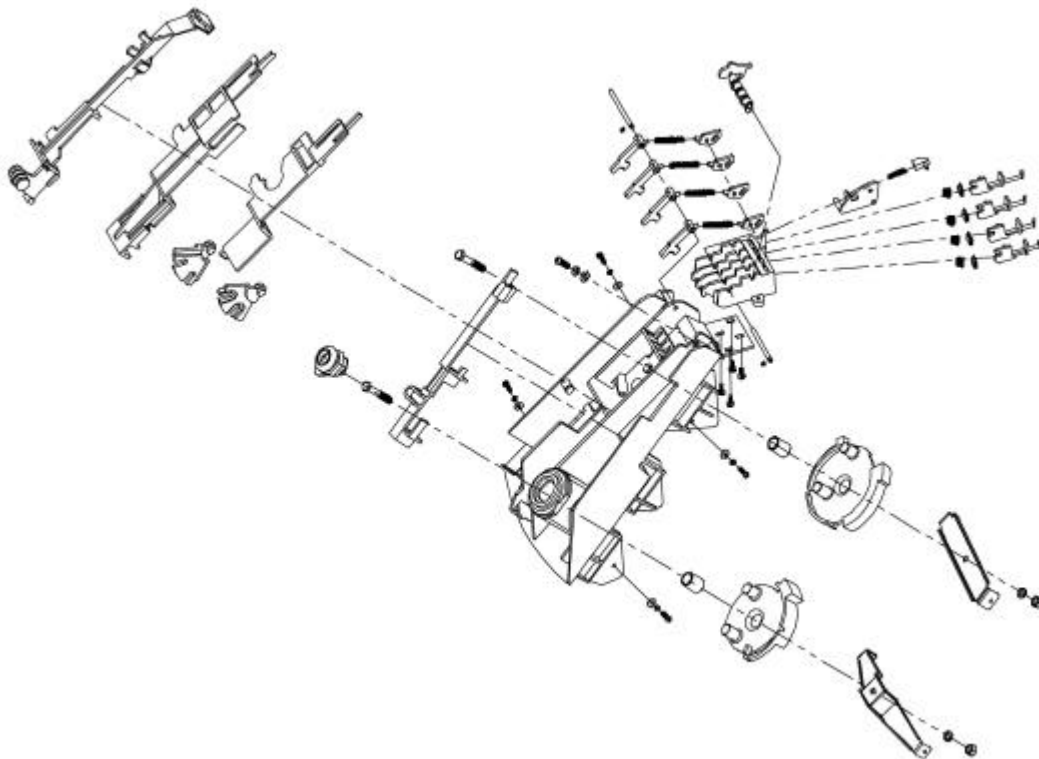


## PRODUCT TRAYS:

1. To disassemble a product tray segment, telescope all trays down to one level, grasp the largest tray, and lift it off the other trays. Repeat this process for the remaining trays.
2. To assemble the product trays, grasp the smallest tray and slide the second smallest tray down over the “T” tabs of the smaller tray. Repeat this process for the remaining trays.

## CONTROL HEART:

1. Turn the control heart assembly upside-down with the upper and lower cams (green color) facing up.
2. Remove the nut and lock washer from both cams. Remove the mounting screws from the two metal cross braces and set cross braces aside.
3. Remove the upper and lower cam and also remove both metal cam bushings.  
\*Note: The upper cam has the shorter step and the lower cam has the longer step.
4. Turn the control heart assembly face up and remove the back-up actuator (gray color) by unsnapping it from the mounting bosses.
5. Slide the back-up slide arm (gray color) up until the notch at the bottom of the slide arm lines up with the horizontal round boss above. Continued on the next page.



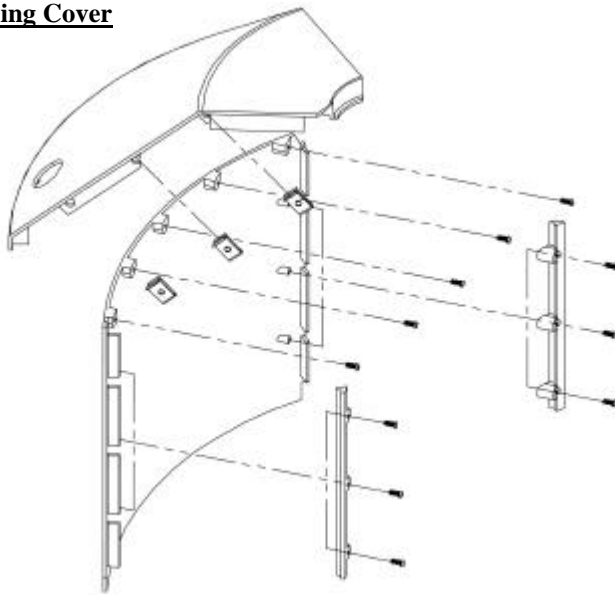


6. Lift the back-up slide arm from the control heart assembly. Note: The round boss is used to hold the back-up spring during testing and service only. Remove and attach the back-up spring below on the side of the lock member arm (gray color) for vending operations.
  7. Move the lower cam slide arm (green color) back until the notches at the bottom of the lower slide arm line up with the retaining tabs above. Lift the lower cam slide arm up to clear the retaining tabs, and then pull the lower cam slide arm back horizontally to remove.
  8. Pull the upper cam slide arm back and lift it out of the control heart assembly.
  9. To remove the lock slide arm, turn the control heart assembly upside- down. Remove the screw and metal arm from the bottom of the lock. Turn the assembly back upright, and lift the slide arm off the vertical side of the control heart assembly. Slide the lock slide arm back horizontally and remove. To reinstall the lock slide arm, perform the above steps in reverse.
  10. To remove the lock, remove the retaining nut and the lock from the control heart assembly. To reinstall the lock, perform the above steps in the reverse order.
  11. Remove the back up connect blocks from the control heart assembly by pulling them up and snapping them from their mounting bosses.
  12. Remove the lock (orange color) of the back-up actuator (gray color) by pulling the lock to the side enough to free the pin from the hole and turn the lock ¼ turn and slide the lock off the spring. The spring can be removed from the back up actuator by twisting and pulling on the spring at the same time.
  13. Remove the lock (orange color) of the back-up actuator (gray color) by pulling the lock to the side enough to free the pin from the hole and turn the lock ¼ turn and slide the lock off the spring. The spring can be removed from the back up actuator by twisting and pulling on the spring at the same time.
1. Remove the back-up actuator assembly (gray color).
  2. Remove the four lever springs and remove the screw to the right of the 4 door latches (orange color). Lift the steel latch shaft on the free end and pull horizontally to remove. Then remove the 4 latches (orange color).
  3. Remove the back-up push arm for key (orange color) by prying up gently on each end until it pops out.
  4. Remove the shaft for the “V” actuators (orange color) by prying up on the right end of the shaft. Pop it up and remove it horizontally.
  5. Remove the 4 press springs and the 4 press plates (orange color).
  6. Remove the 4 “V” actuators by pulling up on the push key (orange color) and sliding the “V” actuators off to the side. Remove the four push keys.
  7. To re-assemble the door latch system, perform the above steps in reverse.

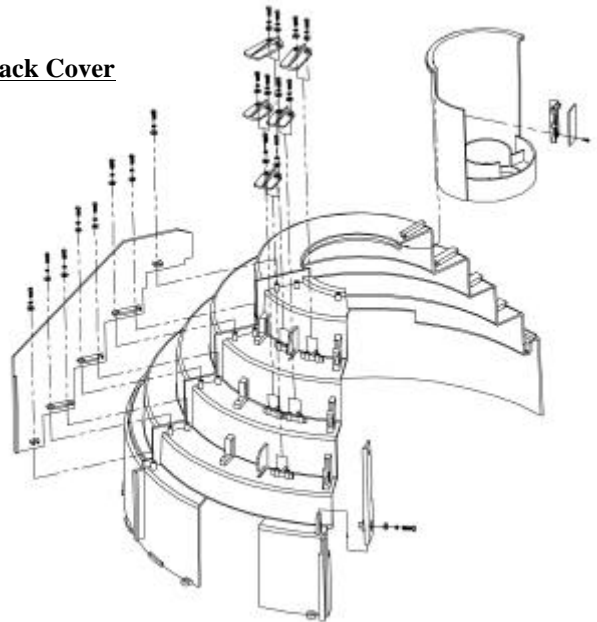
**LOCKING COVER:**

1. Remove bracket “L” and bracket “R” by removing the mounting screws.
2. Remove the 3 “U” nuts from the locking cover upper section by spreading the nuts enough to clear their mounting hole and pulling them off.
3. To remove the locking cover upper section from the locking cover lower section, remove the 5 mounting screws and pull the covers off.

Locking Cover



Back Cover

**BACK COVER:**

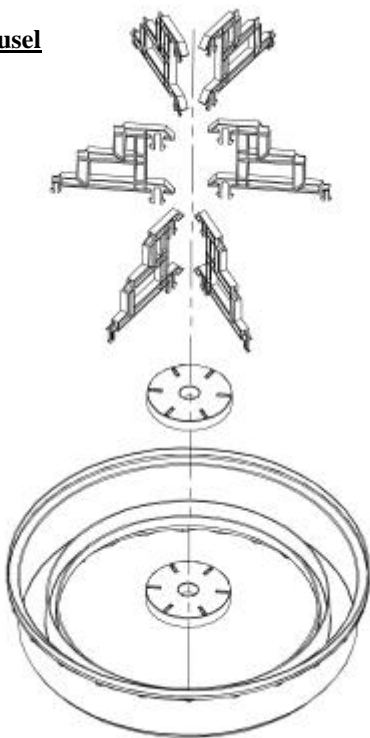
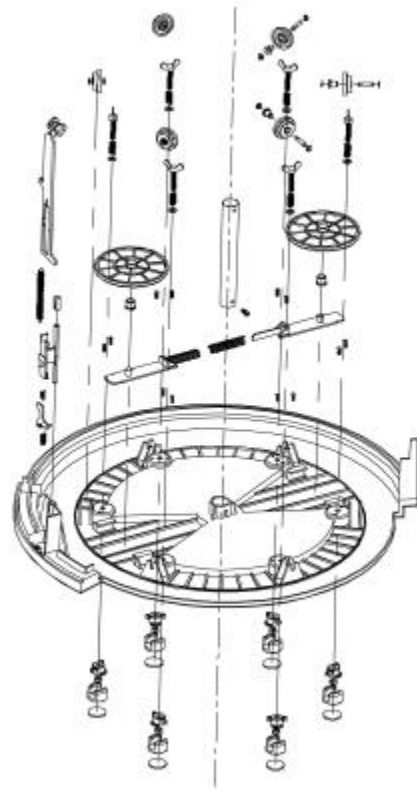
1. Remove mounting plate “C” with attached circuit board and unplug the power cord.
2. Remove the coin box support by rotating it clockwise.
3. Remove connecting plate “A” from the back cover by removing the 8 mounting screws.
4. Remove the connection plate “B” by removing the mounting screw.

**CAROUSEL:**

1. To remove the two center pieces from the 6 tray supports, free one slot at a time in the center piece by squeezing the 2 prongs of the tray support together and pulling the center piece away from the prongs while holding pressure on the center piece to keep other depressed prongs from re-latching. Do this on all 6 slots of the center piece, and it will pull free from the tray supports.
2. To remove the 6 tray supports from the carousel, squeeze the 2 prongs together (through the slots in the carousel), and pull the tray supports out of the carousel slots.

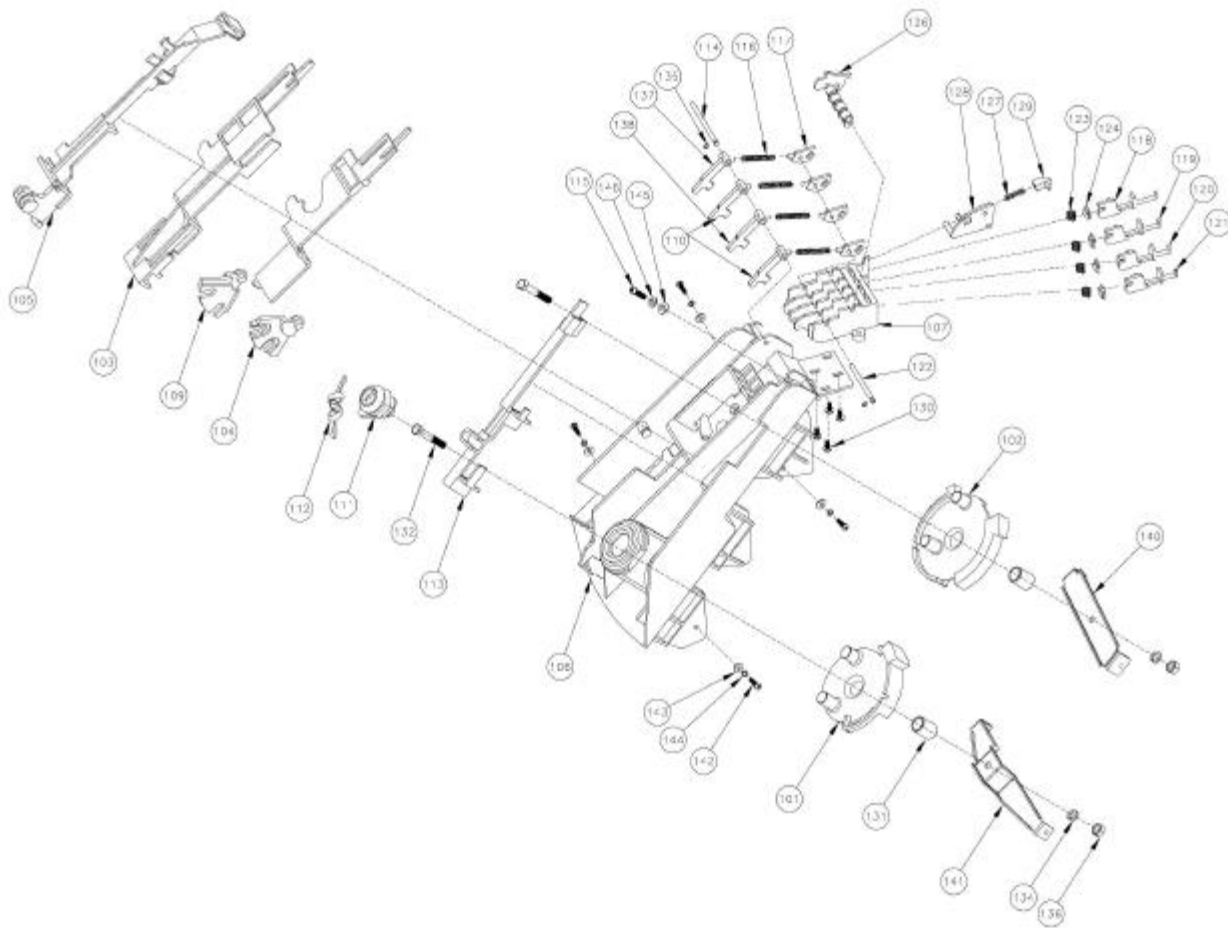
**BASE:**

1. To remove the carousel rollers, lift the rollers from their retaining bosses on the base.
2. The roller shaft can be removed from the rollers by removing one of the “E” clips.
3. Remove the steel tube from the base by removing the screw at the base of the tube.
4. Remove the feet from the base by removing the two screws and the wing nut on top of the base. Remove the foot cup and the foot base from underneath the base.
5. The electrical wire that supplies power to the coin box can be removed by pulling the wire down out of the steel tube and out from underneath the tabs on the base. Also, remove the nut on the jack on the lower left side of the base. Pull the wire and the jack out of the base.

**Carousel****Base**

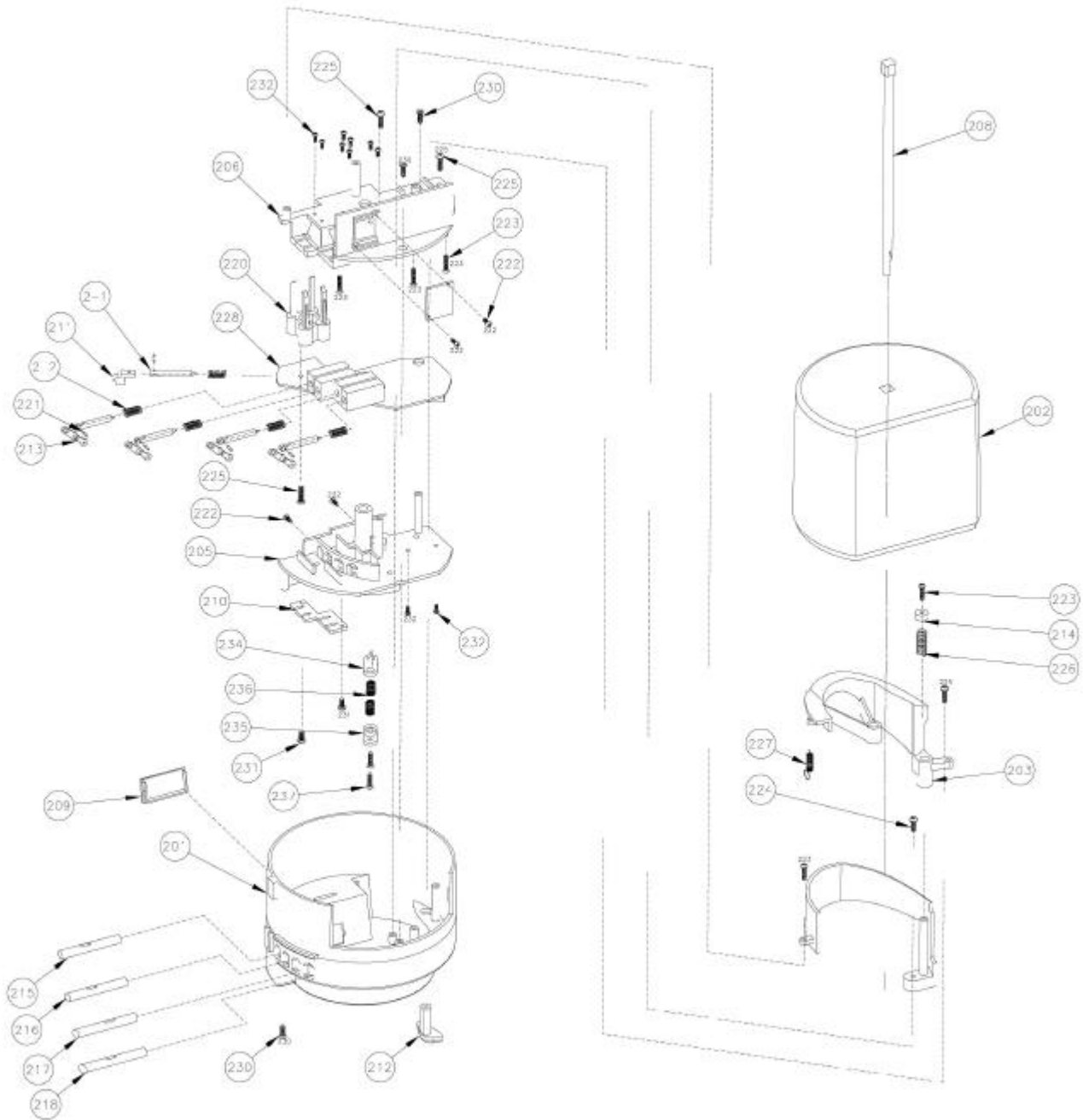


101	121020	LOWER CAM	POM GREEN PMS347C	1
102	121021	UPPER CAM	POM GREEN PMS347C	1
103	121022	LOWER CAM SLIDE ARM	POM GREEN PMS347C	1
104	121023	UPPER CAM SLIDE ARM	POM GREEN PMS347C	1
105	121024	BACKUP SLIDE ARM	POM GREY PMS424C	1
106	121049	CONTROL HEART SUPPORT-A	PC BLACK	1
107	121050	CONTROL HEART SUPPORT-B	PC BLACK	1
108	121107	BACKUP SPRING	OD8x42, DIA0.8 Ni-PLATED	1
109	121025	BACKUP CONNECT BLOCK	POM GREY PMS424C	2
110	121026	LATCH - A	POM ORANGE PMS021C	2
111	121108	CAM LOCK	J-35834-CAM-TBD-14	1
112	121109	KEY		2
113	121027	LOCK SLIDE ARM	POM GREY PMS424C	1
114	121110	LATCH SHAFT POLE	STEEL DIA3.2x48.5 Ni-PLATED	1
115	121111	SCREW FOR LATCH	STAINLESS STEEL M4x15PA	1
116	121112	LEVER SPRING	OD4.0x28, DIA0.5 N-PLATED	4
117	121028	"V"ACTUATOR FOR LATCH	POM ORANGE PMS021C	4
118	121001	NO 4.PUSH KEY	POM ORANGE PMS021C	1
119	121002	NO 3.PUSH KEY	POM ORANGE PMS021C	1
120	121003	NO 2.PUSH KEY	POM ORANGE PMS021C	1
121	121004	NO 1.PUSH KEY	POM ORANGE PMS021C	1
122	121113	SHAFT FOR"V"ACTUATOR	DIA3.2x43.5 Ni-PLATED	1
123	121114	PRESS SPRING	OD6.6x14.4, DIA0.4 Ni-PLATED	4
124	121005	PRESS PLATE	POM ORANGE PMS021C	4
126	121012	BACKUP PUSH ARM FOR KEY	POM ORANGE PMS021C	1
127	121115	SPRING OF BACK UP ACTUATOR	OD4.4x16.1, DIA0.7 Ni-PLATED	1
128	121029	BACKUP ACTUATOR	POM GREY PMS424C	1
129	121013	LOCK OF BACKUP ACTUATOR	POM ORANGE PMS021C	1
130	121116	SCREW	STAINLESS STEEL M3x8BT	4
131	121117	STEEL BUSHING	DIA12.1xDIA12.9x16.7 Ni-PLATED	2
132	121118	HEXAGON SCREW	M5x32 Ni-PLATED	2
134	121119	SPRING WASHER	M5x9.0x1.3 Ni-PLATED	2
135	121120	E RING	ETW-2.3 ACP	2
136	121121	HEXAGON NUT	M5x(8)x4mm Ni-PLATED	2
137	121079	LATCH - B	POM ORANGE PMS021C	1
138	121095	LATCH - C	POM ORANGE PMS021C	1
140	121105	FIX BRACKET-A	STEEL T=1.2mm Zn-PLATED	1
141	121106	FIX BRACKET-B	STEEL T=1.2mm Zn-PLATED	1
142	121122	SCREW	SYAINLESS STEEL M3x10PM	4
143	121123	FLAT WASHER	ID3.3xOD10xT0.9 Ni-PLATED	4
144	121124	SPRING WASHER	M3xOD5x0.7 Ni-PLATED	4
145	121125	FLAT WASHER	ID4.2xOD9xT0.6 Ni-PLATED	1
146	121126	SPRING WASHER	ID4.1xOD7.6x1.0 Ni-PLATED	1
147	121127	SILICON FLUID	SF1000	1g



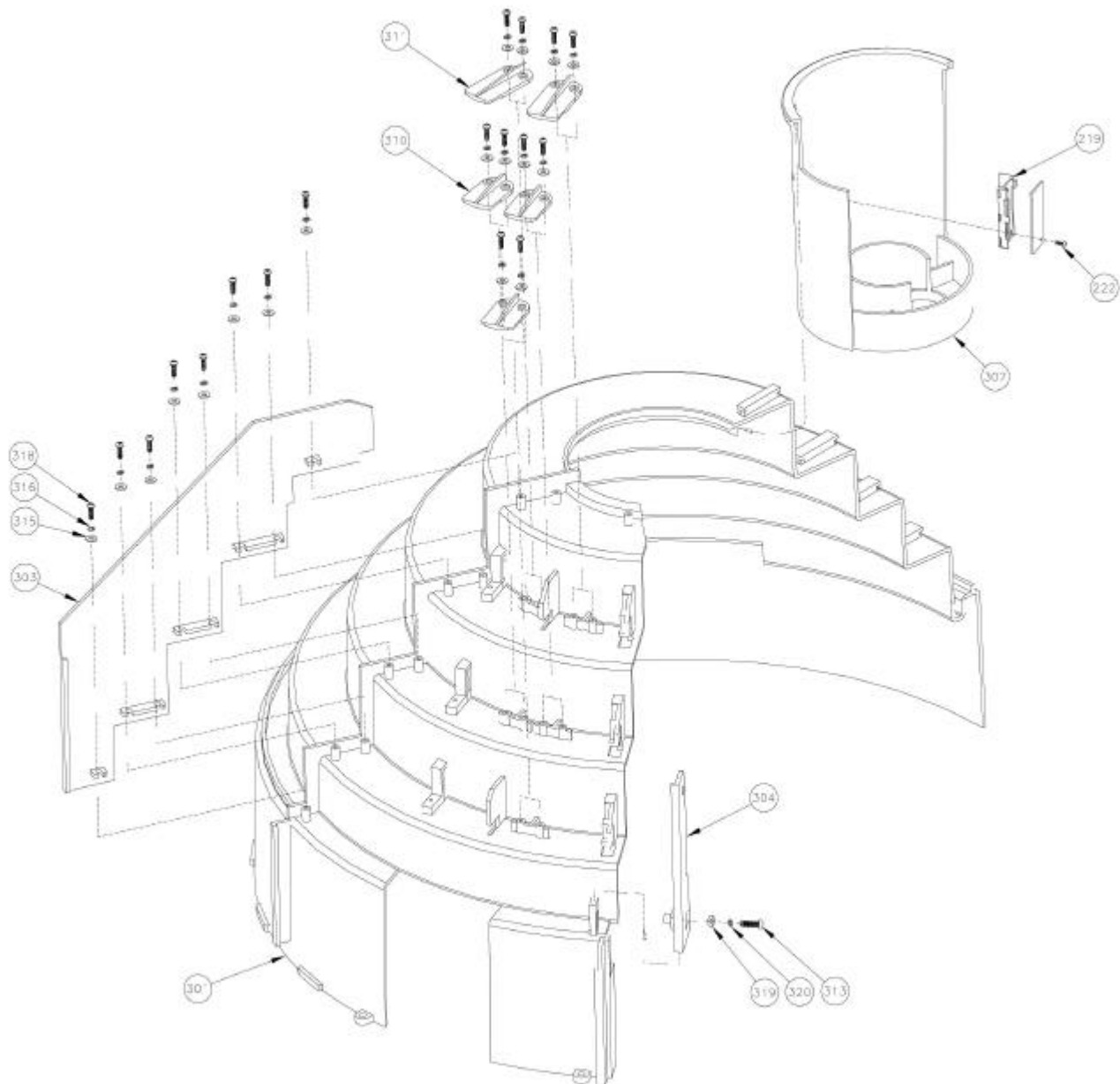


201	121073	COIN BOX-UPPER	ABS BLACK	1
202	121074	COIN BOX-LOWER	ABS BLACK	1
203	121075	COIN TRAY-A	PC RED PMS199C	1
204	121076	COIN TRAY-B	PC RED PMS199C	1
205	121077	MOUNTING PLATE-A	ABS BLACK	1
206	121078	MOUNTING PLATE-B	ABS BLACK	1
208	121082	LOCK POLE	PA66 BLACK	1
209	121083	LENS	PC CLEAR RED PMS#194C	1
210	121080	PRESS PLATE - LEVER	ABS PINK PMS182C	1
211	121086	LOCK POLE KEY	POM BLACK	1
212	121084	PUSH HANDLE	PC COOL GREY PMS#11U	1
213	121087	PUSH LEVER	POM L. PURPLE PMS263C	4
214	121085	LOCK WASHER	PC COOL GREY PMS#11U	1
215	121088	PUSH KEY #1	POM BLUE PMS300C	1
216	121089	PUSH KEY #2	POM BLUE PMS300C	1
217	121090	PUSH KEY #3	POM BLUE PMS300C	1
218	121091	PUSH KEY #4	POM BLUE PMS300C	1
219	121081	PCB BRACKET	ABS PINK PMS182C	1
220	121098	INFRARED TRANSMITTER	PMMA CLEAR	1
221	121128	PIN-PUSH KEY	SPP1.5x6 BLACK OXIDE	5
222	121129	SCREW	STAINLESS STEEL M2.3x6PT	5
223	121130	SCREW	STAINLESS M2.6x10PT	5
224	121131	SCREW	STAINLESS STEEL M3x8PT	1
225	121132	SCREW	STAINLESS STEEL M3x10PA	4
226	121133	SPRING A - COIN BOX	OD7.4x26.1 DIA0.6 Ni-PLATED	1
227	121134	SPRING B - COIN BOX	OD4.3x17.1, DIA0.3 Ni-PLATED	1
228	121135	ELECTRICAL CONTROL ASSEMBLY		1
229	121136	TRANSFORMER	PRI: 120V 60Hz, SEC: 0.5A DC12V	1
230	121137	SCREW	STAINLESS STEEL M3x10KA	3
231	121138	SCREW	STAINLESS STEEL M3x6PT	2
232	121139	SCREW	STAINLESS STEEL M2x5PM	9
233	121140	SCREW	STAINLESS STEEL M2x5KM	1
234	121101	LOCK LATCH	POM BLACK	1
235	121102	LATCH COVER	POM BLACK	1
236	121141	SPRING-LOCK LATCH	OD6.1x14, DIA0.3 Ni-PLATED	2
237	121142	SCREW	STAINLESS STEEL M2.6x12KA	2

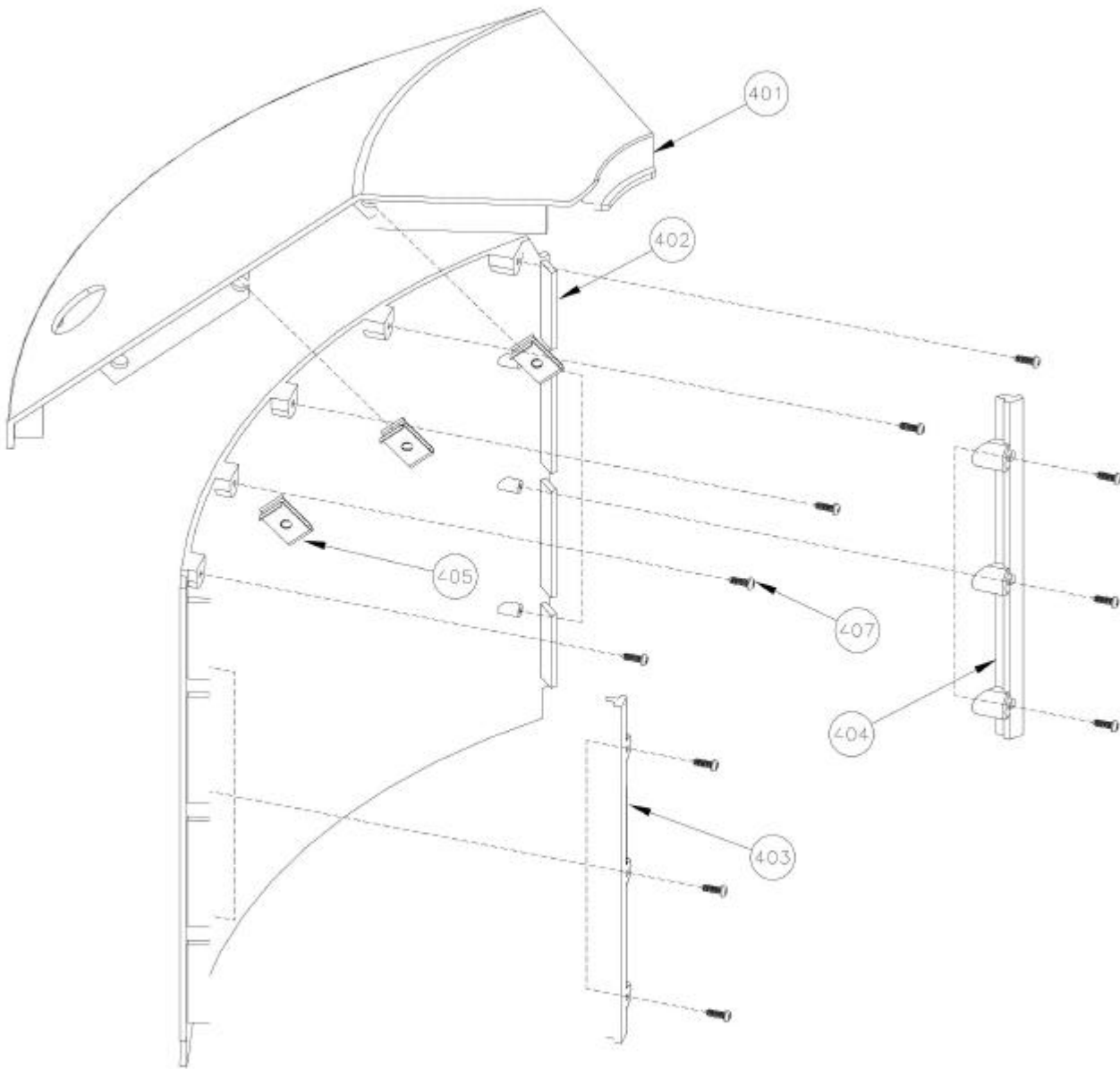




219	121081	PCB BRACKET	ABS PINK PMS182C	1
222	121129	SCREW	STAINLESS STEEL M2.3x6PT	5
301	121063	BACK SHELL	PCTA DS2010 CLEAR	1
302	121072	COINBOX SUPPORT	PC BLACK	1
303	121051	CONNECTING PLATE-A	PC BLACK	1
304	121030	CONNECTING PLATE-B	PC BLACK	1
305	121068	HOUSING-LEVEL	PC CLEAR	1
306	121069	BASE-LEVEL	ABS WHITE	1
307	121070	COVER-LEVEL	ABS WHITE	1
308	121143	SCREW	STAINLESS STEEL M3x12PA	5
309	121144	BABY OIL	4mL	4mL
310	121099	PRESS BRACKET-A	POM BLACK	3
311	121100	PRESS BRACKET-B	POM BLACK	2
312	121145	SCREW	STAINLESS STEEL M3x10KA	1
313	121146	SCREW	STAINLESS STEEL M4x15PA	1
314	121147	SCREW	STAINLESS STEEL M5x16PA	2
315	121148	FLAT WASHER	ID3.3xOD10xT0.9 Ni-PLATED	6
316	121149	SPRING WASHER	M3xOD5x0.7 Ni-PLATED	25
317	121150	FLAT WASHER	ID3.3xOD8xT1.0 Ni-PLATED	19
318	121151	SCREW	STAINLESS STEEL M3x14PT	21
319	121152	FLAT WASHER	ID4.2xOD9xT0.6 Ni-PLATED	1
320	121153	SPRING WASHER	M4.1xOD7.6x1.0 Ni-PLATED	1



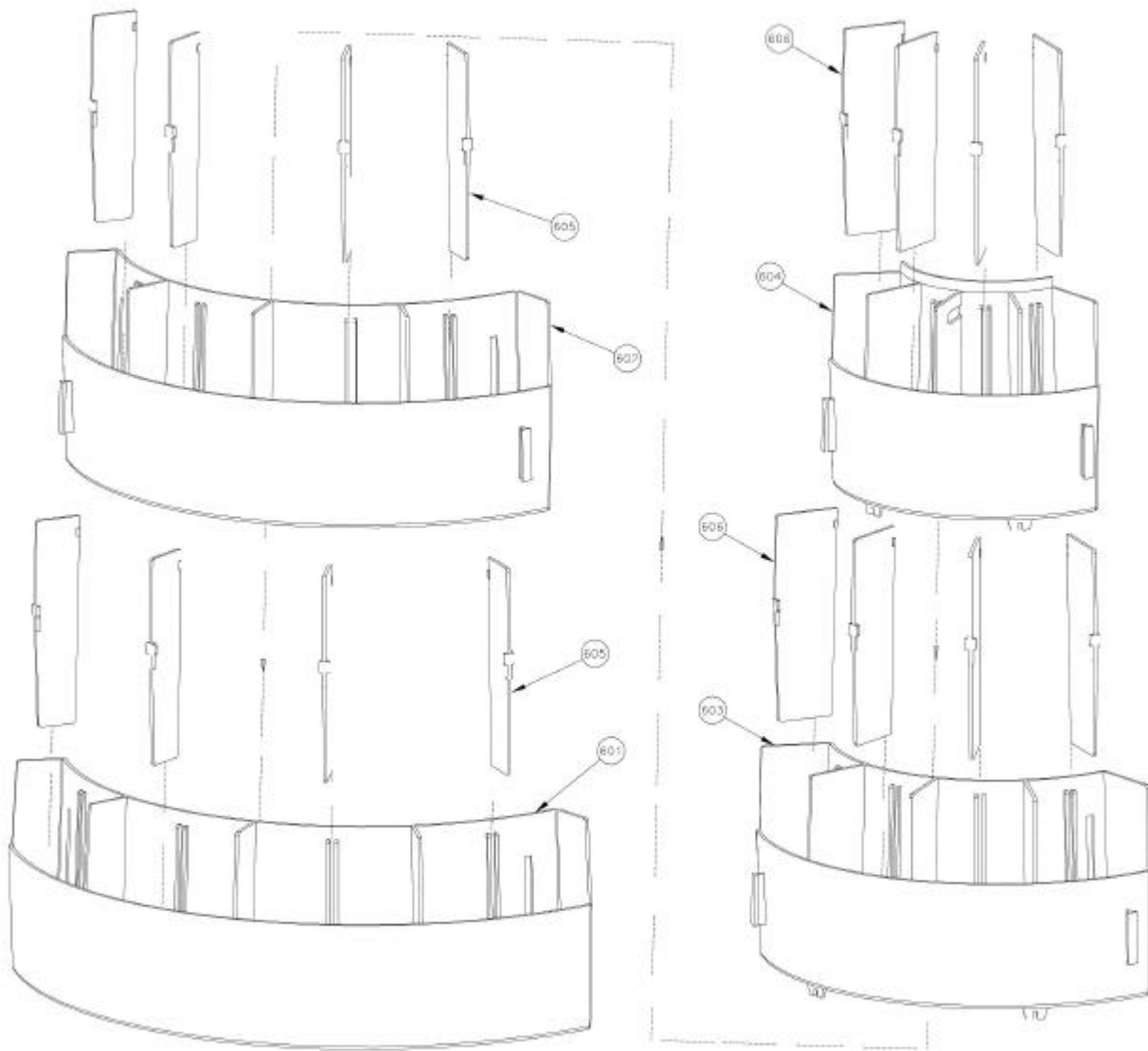
401	121071	LOCKING COVER UPPER	PC BLACK	1
402	121060	LOCKING COVER LOWER	PC BLACK	1
403	121031	BRACKET --L	PC BLACK	1
404	121032	BRACKET --R	PC BLACK	1
405	121154	U--TYPE NUT	STEEL 13x22,T=0.7 Ni-PLATED	3
406	121155	SCREW	STAINLESS STEEL M5x16PA	3
407	121156	SCREW	STAINLESS STEEL M3x10PA	11



501	121064	FRONT SHELL	PCTA DS2010 CLEAR	1
502	121061	NO.4 DOOR	PC CLEAR	1
503	121062	NO.3 DOOR	PC CLEAR	1
504	121052	NO.2 DOOR	PC CLEAR	1
505	121053	NO.1 DOOR	PC CLEAR	1
506	121033	DOOR HANDLE	POM YELLOW PMS108C	1
	121033		POM PURPLE PMS252C	1
	121033		POM GREEN PMS368C	1
	121033		POM BLUE PMS285C	1
507	121034	DOOR LATCH--A	POM BLACK	1
508	121035	DOOR LATCH--B	POM BLACK	3
509	121036	LEVER--L	POM GREY PMS424C	4
510	121037	LEVER--R1	POM BLACK	3
511	121038	LEVER--R2	POM BLACK	1
512	121054	NO.4 LEVER COVER	PC BLACK	1
513	121055	NO.3 LEVER COVER	PC BLACK	1
514	121056	NO.2 LEVER COVER	PC BLACK	1
515	121057	NO.1 LEVER COVER	PC BLACK	1
516	121039	NO.4 DOOR VANE	POM BLACK	1
517	121040	NO.3 DOOR VANE	POM BLACK	1
518	121041	NO.2 DOOR VANE	POM BLACK	1
519	121042	NO.1 DOOR VANE	POM BLACK	1
521	121043	SCREW BRACKET -B	POM BLACK	1
522	121044	SCREW BRACKET -C	POM BLACK	2
523	121157	SCREW	STAINLESS STEEL M3x12KA	4
524	121158	SCREW	STAINLESS STEEL M3x12PA	3
525	121159	RIVET SCREW	STAINLESS STEEL M3x5BB	14
526	121160	SCREW	STAINLESS STEEL M3x10KA	16

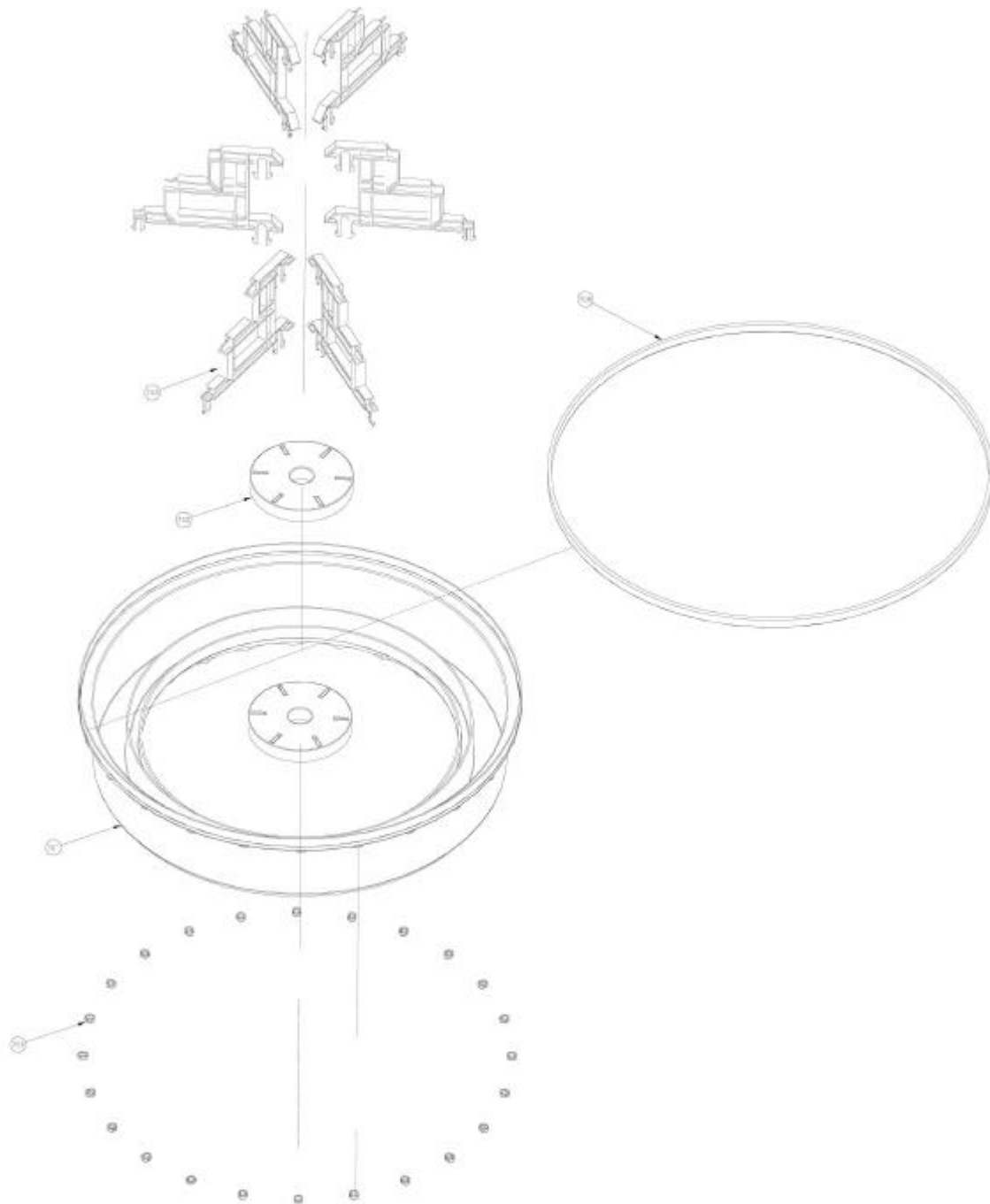


601	121018	LEVER 4# TRAY	ABS CLEAR	3
602	121019	LEVER 3# TRAY	ABS CLEAR	3
603	121016	LEVER 2# TRAY	ABS CLEAR	3
604	121017	LEVER 1# TRAY	ABS CLEAR	3
605	121014	REMOVABLE DIVIDER--A	ABS CLEAR	24
606	121015	REMOVABLE DIVIDER--B	ABS CLEAR	24





701	121065	CAROUSEL	PCTA DS2010 CLEAR	1
702	121045	CENTRE PIECE	PC BLACK	2
703	121046	TRAY SUPPORT	PC BLACK	6
704	121092	STEEL TUBE	OD25x179, T=1.0 CHROME	1
705	121006	INSERT--A	POM BLACK	2
706	121007	INSERT--B	POM BLACK	24
707	121008	THRUST WASHER	POM BLACK	1
708	121093	"U" RING	RUBBER BLACK	1
709	121161	SCREW	STAINLESS STEEL M5x8PM	2
710	121162	GLUE	GB-404CPU 10g	10g
711	121163	GLUE	GB-899 1.0g	1.0g





108	121107	BACKUP SPRING	OD8x42, DIA0.8 Ni-PLATED	
801	121066	BASE	ABS BLACK	1
802	121009	ROLLER	TPE NATURAL	6
803	121164	SHAFT ROLLER	STEEL DIA5x24.5 Ni-PLATED	6
804	121058	DETENT WHEEL	TPE DARK PURPLE PMS253C	2
805	121165	DETENT SPRING	OD13.3x60 DIA1.5 Ni-PLATED	2
806	121067	DETENT SPRING APPLICATOR	POM DARK PURPLE PMS253C	2
807	121166	LOCK WASHER	ETW-4 ACP	12
808	121011	FOOT BASE	POM BLACK	6
809	121010	FOOT CUP	POM BLACK	6
810	121094	FOOT	RUBBER BLACK	6
811	121167	WING BOLT M6	STEEL M6x30 Ni-PLATED	6
812	121168	NUT M6	M6 Ni-PLATED	6
814	121169	STEEL BUSHING	ID7.5xOD9.5x20	1
815	121103	DETENT WHELL PIPE	POM WHITE	2
816	121104	ROLLER PIPE	POM WHITE	6
817	121170	SCREW	STAINLESS STEEL M3x10PT	12
818	121171	SPRING	OD8.7x15, DIA1.2 Ni-PLATED	6
819	121172	FLAT WASHER	ID6.4xOD12.5xT1.0 Ni-PLATED	6
820	121173	SILICON FLUID	SF1000	2g
901	121059	LOCK MEMBER ARM	POM GREY PMS424C	1
902	121047	LOCK MEMBER LATCH	POM GREY PMS424C	1
903	121174	SPRING OF LATCH	OD6.6x14.4, DIA0.6 Ni-PLATED	1
904	121048	ROCKER OF LOCK MEMBER	POM GREY PMS424C	1
905	121175	SPRING OF ROCKER	OD7.4x18, DIA0.6 Ni-PLATED	1

