

# LITTLE JOE COMPONENT ACCESS



*All servicing and repairs are to be  
done by an authorized Service Technician.*



TABLE OF CONTENTS

MAIN COMPONENT ACCESS

DISASSEMBLY ----- 3

REASSEMBLY ----- 7

BREW MECH COMPONENT ACCESS

DISASSEMBLY ----- 12

REASSEMBLY ----- 17

COMPLETE DISASSEMBLY AND REASSEMBLY  
INSTRUCTIONS

DISASSEMBLY ----- 20

REASSEMBLY ----- 28

**WARNING:** *Unplug machine power and read through all instructions carefully before servicing your machine. Failure to follow instructions may void your machine warranty.*

Ensure machine is powered off, has no water in it, and has cooled completely.

## MAIN COMPONENT ACCESS DISASSEMBLY



Remove drip tray, then  
remove waste bin.



Remove 3 screws (circled)  
then slide the back panel  
down about 1/4" to  
disengage the locking tabs,  
then pull away from the  
machine.



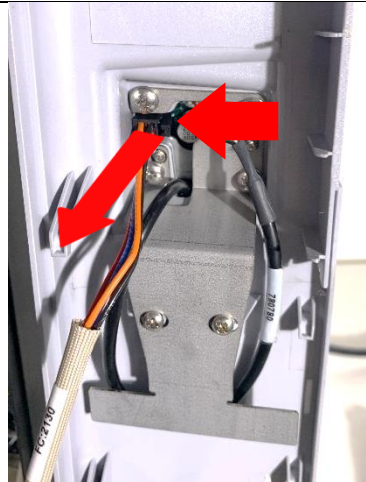
Open the brew mechanism,  
leave open for front panel  
removal.



Remove 1 screw (circled)



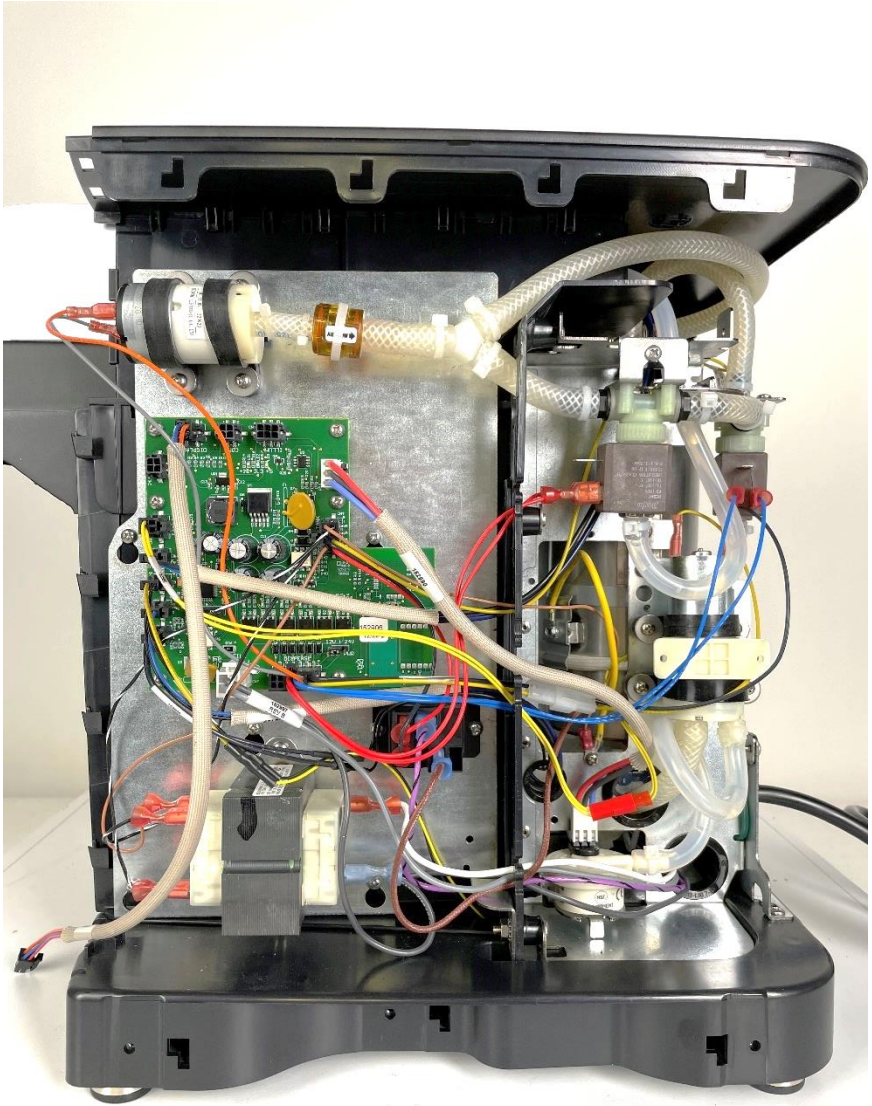
Lift the right front panel up about 1/4", then pull away from the machine, disengaging locking tabs. Be careful with display wiring.



Press on the locking tab on the harness connector and pull to release it from the display board.



Remove 3 screws (circled). Slide the right side panel towards the back of the machine about 1/4" to disengage locking tabs, then pull away.



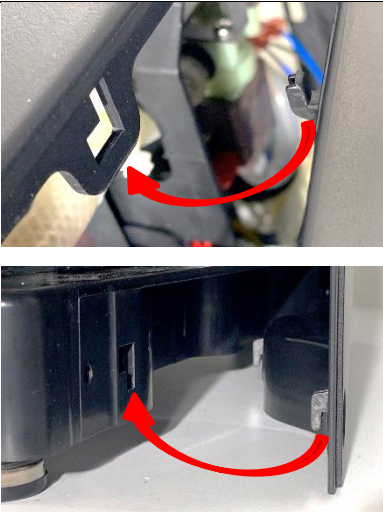
*Side view*





*Back view*

## REASSEMBLY



Detail of side panel hooks and machine slots.



Right side panel hooks inserted into machine slots.



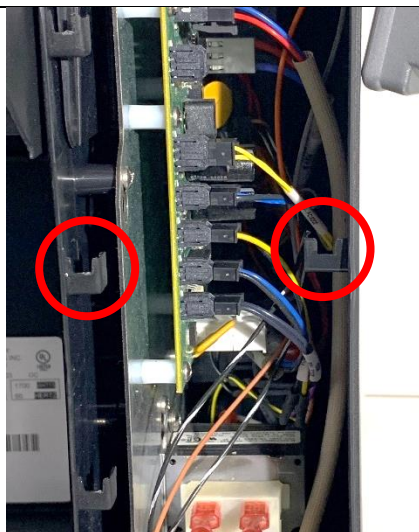
Align upper and lower side panel hooks. Slide right side panel forward about 1/4" to the front of the machine to lock in place.



Insert and tighten 3 screws.



Open brew mechanism for reassembly of front right panel.



Detail of slots on machine and right side panel.



Front panel hook detail.



Push wire connection into display board, ensure the locking tab is on the right and the connector is secure.





Place front panel flush against the machine, with the top of the front panel about 1/4" above the top of the machine cover.



Slide front panel down into place, engaging panel hooks with slots on the machine and on the side panel. Tighten screw.



If power cord was removed from back panel, thread it back through the opening shown above.



Align hooks on the sides and bottom of the back panel to slots on the sides and bottom of the back of the machine. Slide back panel up about 1/4" to engage the hooks into the slots.



Insert and tighten 3 screws.



Replace Waste Bin and Drip Tray.



# BREW MECH COMPONENT ACCESS

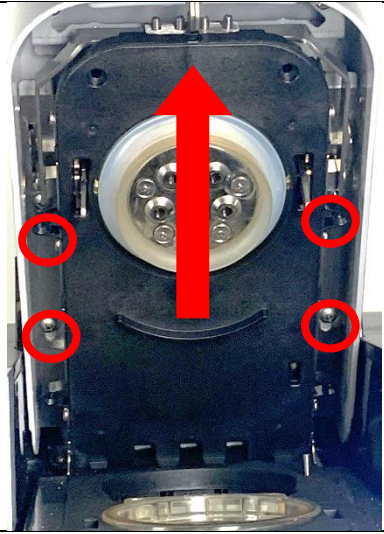
This is a separate disassembly process from the Main Component Access process. Follow these instructions if you need to access any of the parts associated with the brew mechanism. For further details on these parts, see the Parts List on our website.

## DISASSEMBLY

	
<p>Open the brew mechanism.</p>	<p>Remove 6 screws (circled) then remove the handle cover by pulling it away from the brew mech cover.</p>



Insert a screwdriver under the brew mech handle to gently pry the trim plate away from the brew mech.



Loosen 4 screws (circled), then slide silver brew mech cover upwards to clear the screws from the keyholes.



Keyhole detail





To be able to disengage the handle and properly remove the brew mech cover, close the brew mech halfway, then tilt the back of the brew mech cover upwards and the front of the brew mech cover downwards.

You may need to shift the cover up and down to disengage the screws from the keyhole slots.



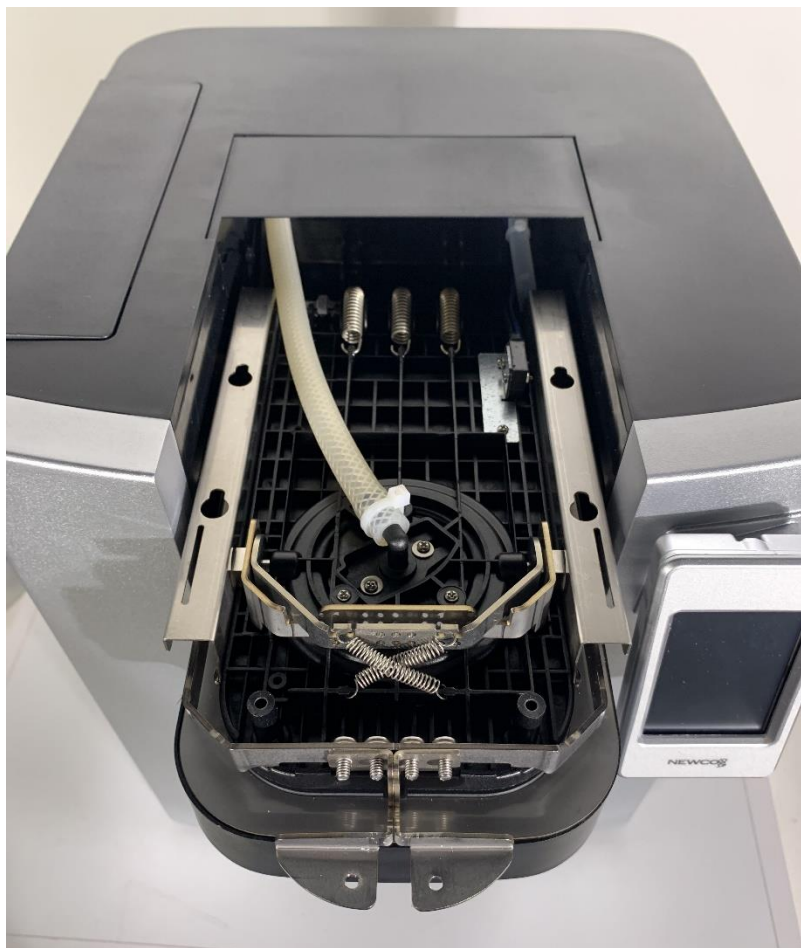
Then, while holding the brew mech cover in place, close the brew mechanism to clear the handle. Latch the brew mechanism in place before the next step.



Tilt the brew mech cover front up and slide it out of the bushing guide.



If bushings come unattached from the brew mech cover, press them back on once the brew mech cover is free from the machine.



## REASSEMBLY



With the brew mechanism closed, lift the panel containing the bushing guide.



With the bushing guide panel lifted, align the bushings into the bushing guide.



Tilt the brew mech cover front up and slide it into the bushing guide.



Note: you will need to align the screws on the brew mech cover with the keyholes on the brew mechanism.



Raise the brew mechanism to meet the brew mech cover, aligning the handle into the front slot in the brew mech cover.



Fully open the brew mechanism and brew mech cover together to view the screws and keyhole slots.



Align the screws into the widest part of the keyhole slots and press the brew mech cover onto the brew mechanism.

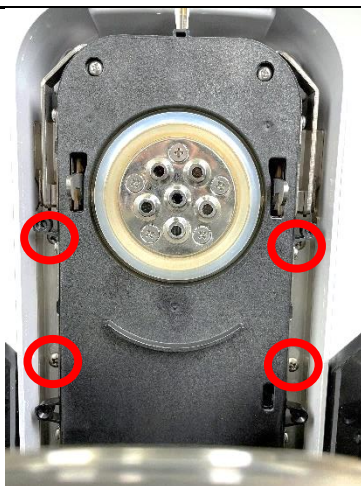


Slide brew mech cover down and back into the machine to fully seat the screws into the narrow part of the keyhole slots.

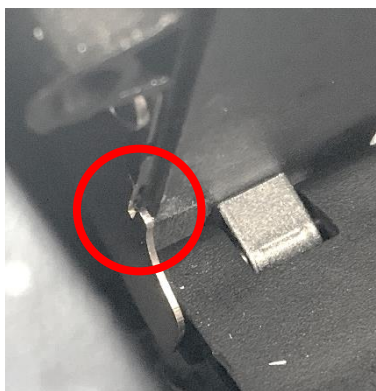




Insert and tighten two circled screws. If screws do not tighten, ensure the brew mech cover screws are fully seated into the brew mechanism keyholes.



Tighten 4 keyhole screws.



Note: the trim plate will need to set into trim plate retaining notches, pointed to with arrows in the next image.



Reattach trim plate and handle cover by inserting and tightening 4 screws.

# COMPLETE DISASSEMBLY AND REASSEMBLY

Before beginning the complete disassembly process, check the Parts List on our website to locate components.

## DISASSEMBLY



Remove drip tray, then remove waste bin.



Remove 3 screws (circled) then slide the back panel down about 1/4" to disengage the locking tabs, then pull away from the machine.



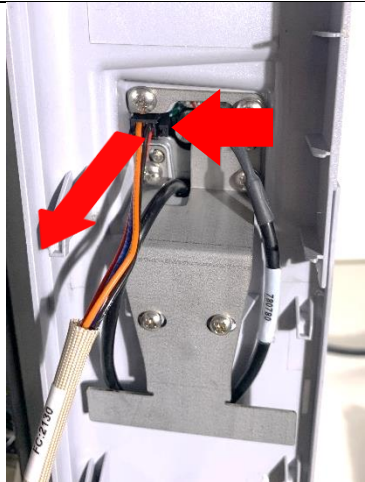
Open the brew mechanism, leave open for front panel removal.



Remove 2 screws (circled)



Lift the front panels up about 1/4", pull away from the machine, disengaging the locking tabs. Be careful with display wiring.



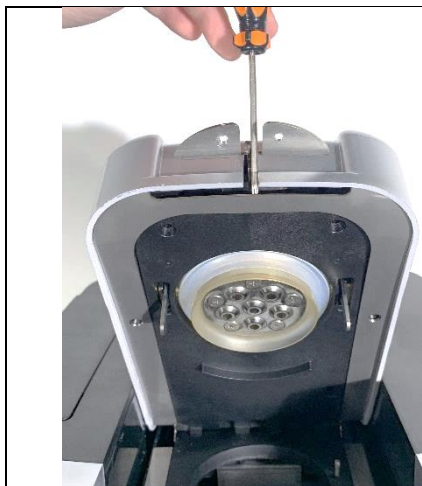
Press on the locking tab on the harness connector and pull to release it from the display board.



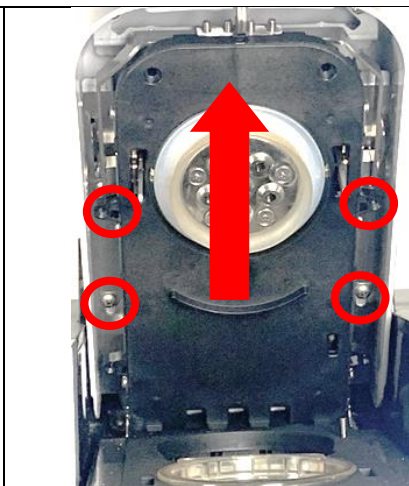
Remove 3 screws (circled). Slide the right side panel towards the back of the machine about 1/4" to disengage locking tabs, then pull away.



Remove 6 screws (circled) then remove the handle cover by pulling it away from the brew mech cover.



Insert a screwdriver under the brew mech handle to gently pry the trim plate away from the brew mech.



Loosen 4 screws (circled), then slide and lift silver hood upwards to clear the screws from the keyholes.



Keyhole detail





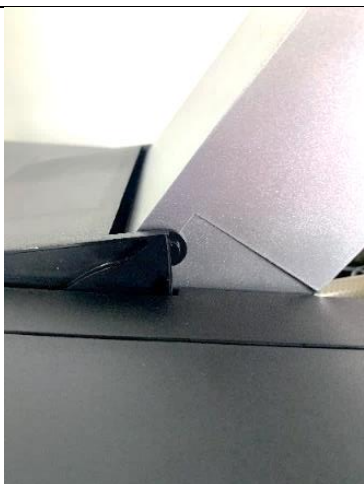
To be able to disengage the handle and properly remove the brew mech cover, close the brew mech halfway, then tilt the back of the brew mech cover upwards and the front of the brew mech cover downwards.

You may need to shift the cover up and down to disengage the screws from the keyhole slots.



Then, while holding the brew mech cover in place, close the brew mechanism to clear the handle. Latch the brew mechanism in place before the next step.





Tilt the brew mech cover front up and slide it out of the bushing guide.



If bushings come unattached from the brew mech cover, simply press them back on once the brew mech cover is free from the machine.



Open reservoir lid, then lift up, using the handle, to remove side reservoir.



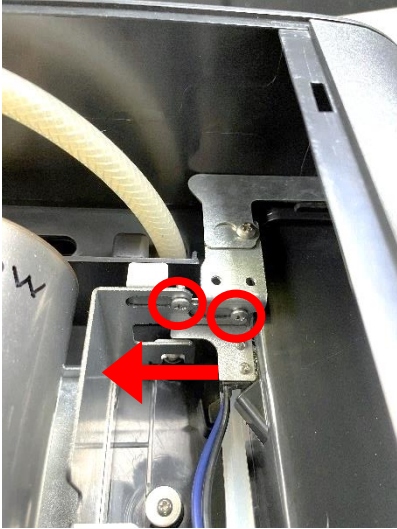
Side reservoir handle location.



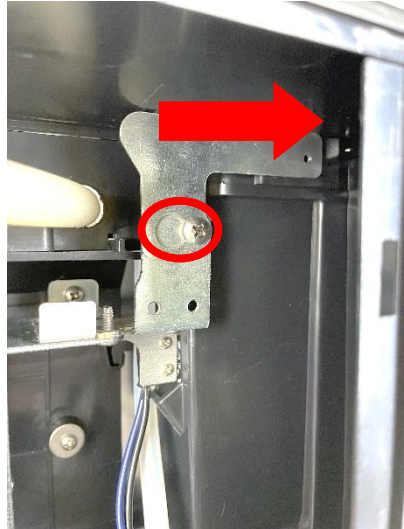
Remove 1 screw (circled) from the left side panel near the back of the machine.



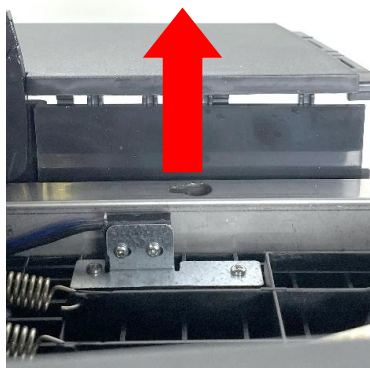
Remove 1 screw (circled) from the left side panel near the front of the machine.



Loosen 2 screws (circled). Slide the reservoir detection switch harness to the left, so that it is removed from its opening in the left side panel.



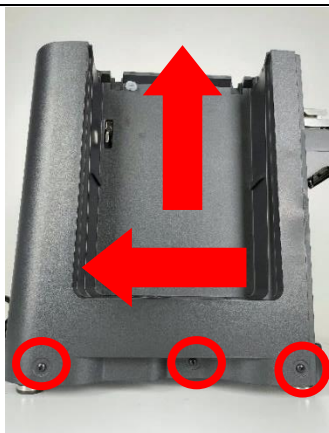
Loosen 1 screw (circled), then slide L bracket to the right to remove the screw from the keyhole.



Gently pull up about 1/4" on the top cover to release panel tabs.



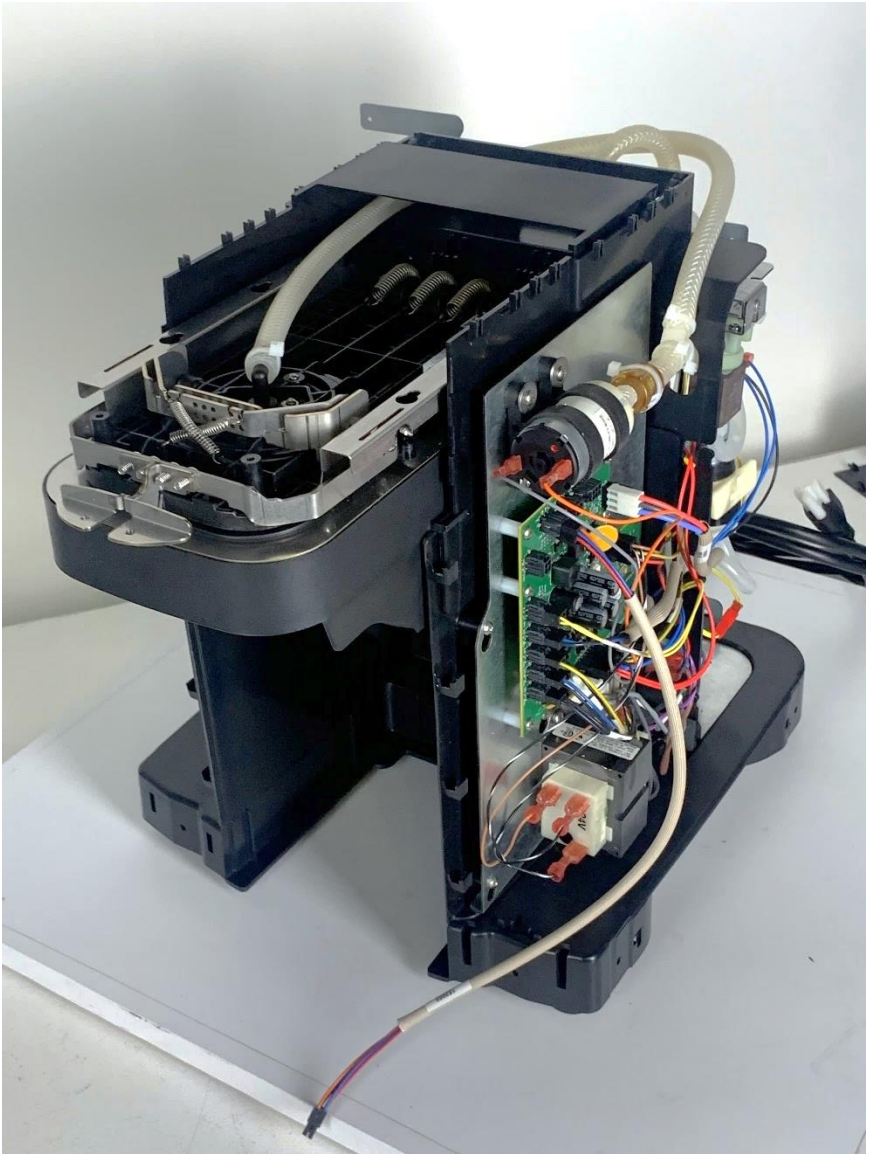
Lift bushing guide panel then slide top cover about 2" towards the back of the machine. Lift top cover up to remove.



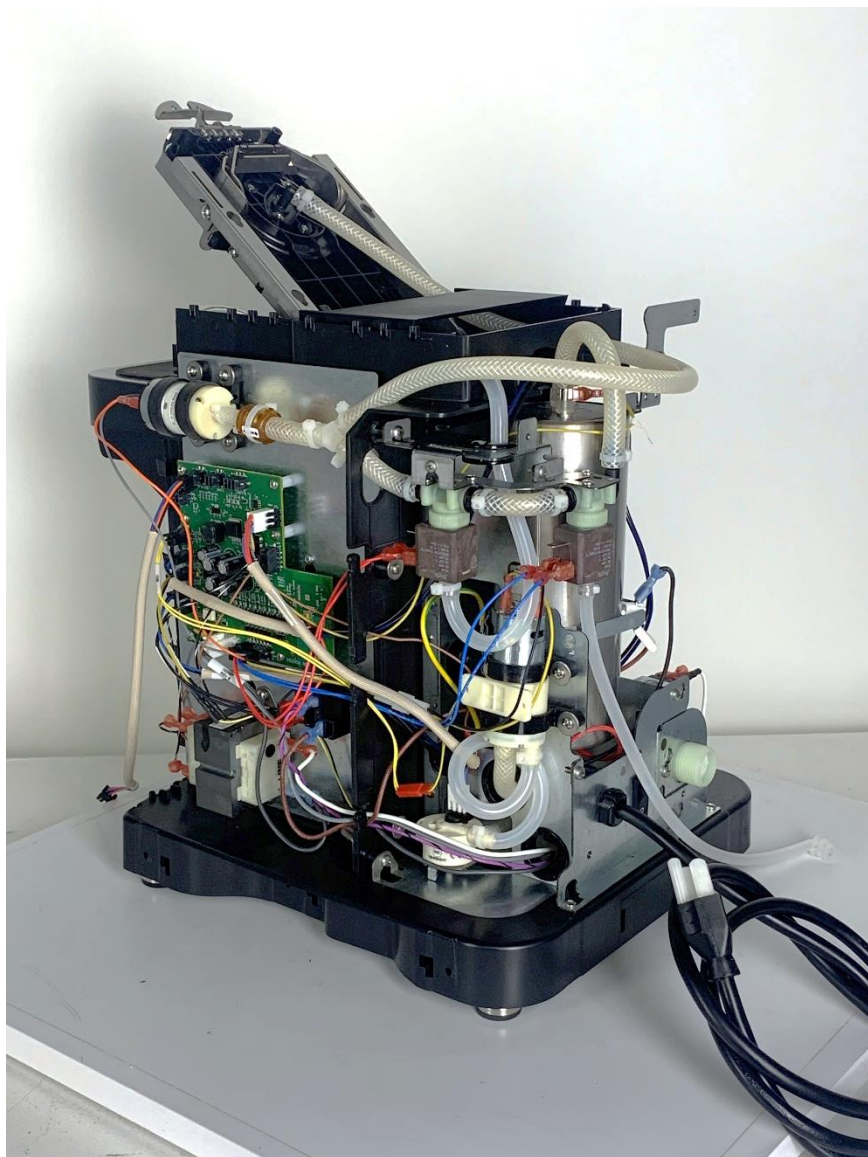
Remove 3 screws (circled), then slide left side panel about 1/4" towards the back of the machine to disengage the locking tabs, then lift panel up and away from the machine.



Remove the vent tube from the left side panel to complete the disassembly process.



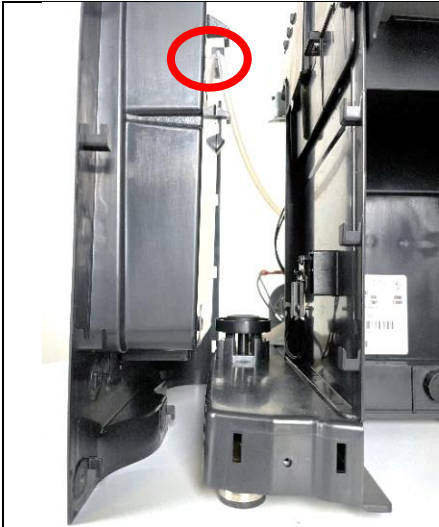




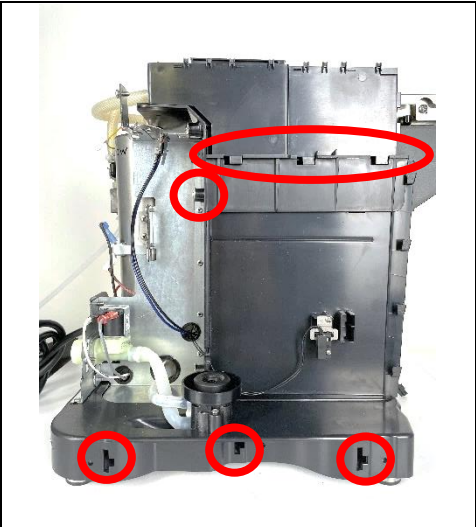




# REASSEMBLY



Insert vent tube into the left side panel, making sure it is fully seated.



Align tabs on left side panel with slots on the machine, with the panel tabs about 1/4" above and to the left of the machine slots.



After aligning the left side panel tabs, slide down and forward onto the machine.



Note: reservoir inlet must be centered in left side panel opening.



With bushing guide panel lifted, align the top cover cutout around the bushing guide panel.



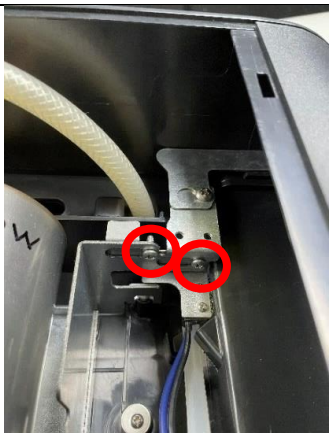
Lower and slide the top cover forward to align locking tabs.



Ensure screw hole tabs are over the stainless steel plates on the front and back of the left side of the machine. Screw holes will be aligned in a later step.



Gently press down to snap top cover into place, engaging the locking tabs.



Set the reservoir detection switch fully to the right to set it into the left side panel opening. Then tighten the 2 screws on its bracket.



Insert and tighten one screw on the left side panel near the front of the machine, gently pressing down on the top cover to ensure correct alignment.



Place keyhole over screw then slide L bracket to the left. Do not tighten screw yet. Hold the L bracket in place to align with the screw hole in the next step.



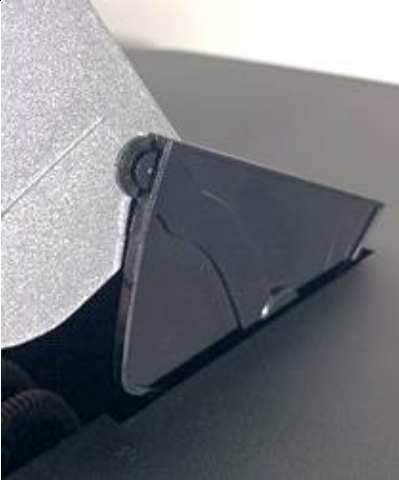
Insert and tighten one screw on the left side panel near the back of the machine, gently pressing down on the top cover to ensure correct alignment. Tighten the screw on the L bracket from the previous step.



Install reservoir into its location on the left side panel. Ensure reservoir is fully seated, then close the lid.



With the brew mechanism closed, lift the bushing guide panel.



With the bushing guide panel lifted, align the bushings into the bushing guide.



Tilt the brew mech cover front up and slide it into the bushing guide panel.





Note: You may need to slide the silver hood back and forth to catch the keyholes with the screws.

Note: you will need to align the screws on the brew mech cover with the keyholes on the brew mechanism.



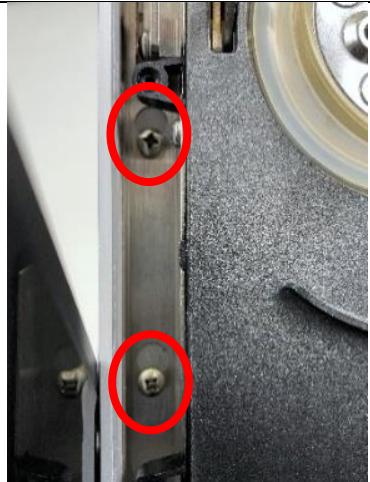
Raise the brew mechanism to meet the brew mech cover, aligning the handle into the front slot in the brew mech cover.



Fully open the brew mechanism and brew mech cover together to view the screws and keyhole slots.



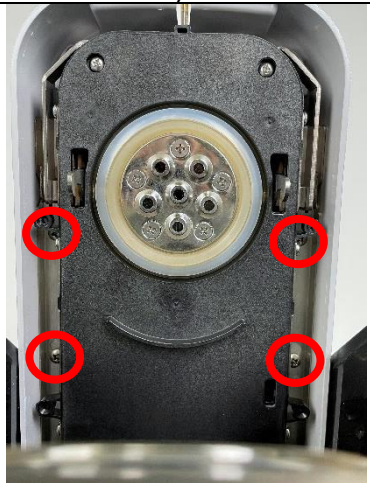
Align the screws into the widest part of the keyhole slots and press the brew mech cover onto the brew mechanism.



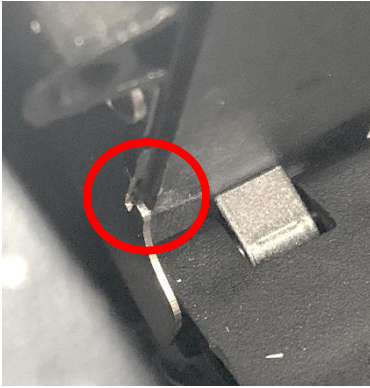
Slide brew mech cover down and back into the machine to fully seat the screws into the narrow part of the keyhole slots.



Insert and tighten two circled screws. If screws do not tighten, ensure the brew mech cover screws are fully seated into the brew mechanism keyholes.



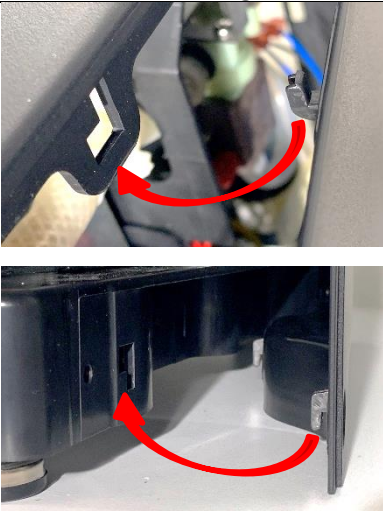
Tighten 4 keyhole screws.



Note: the end of the trim plate will need to slide into trim plate retaining notches, pointed to with arrows in the next image.



Reattach trim plate and handle cover by inserting and tightening 4 screws.



Detail of side panel hooks and machine slots.



Right side panel hooks inserted into machine slots.



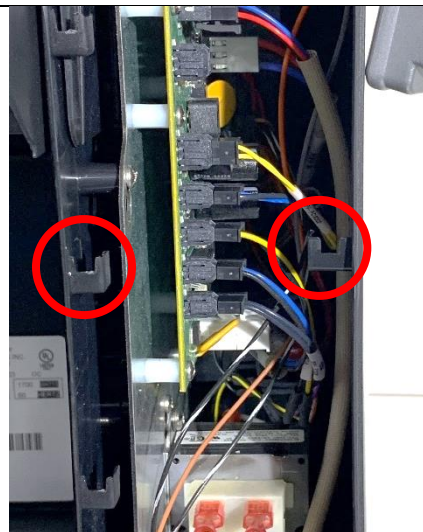
Align upper and lower side panel hooks. Slide right side panel forward about 1/4" to the front of the machine to lock in place.



Insert and tighten 3 screws.



Open brew mechanism for reassembly of front panels.



Detail of slots on machine and right side panel. Left and right side panels have mirrored slots.





Front panel hook detail. Left and right front panels have mirrored hooks.



On the right front panel, push wire connection into display board, ensure the locking tab is on the right and the connector is secure.



Place each front panel flush against the machine, with the top of each front panel about 1/4" above the top of the machine cover.



Align front panel hooks about 1/4" above machine tabs. Slide panels down into place.





If power cord was removed from back panel, thread it back through the opening shown above.



Align hooks on the sides and bottom of the back panel to slots on the sides and bottom of the back of the machine. Slide back panel up about 1/4" to engage the hooks into the slots.



Insert and tighten 3 screws.



Replace Waste Bin and Drip Tray.